

# OLIN PARK FACILITY

Renovation Project  
Public Meeting  
January 26, 2021



# OLIN PARK FACILITY

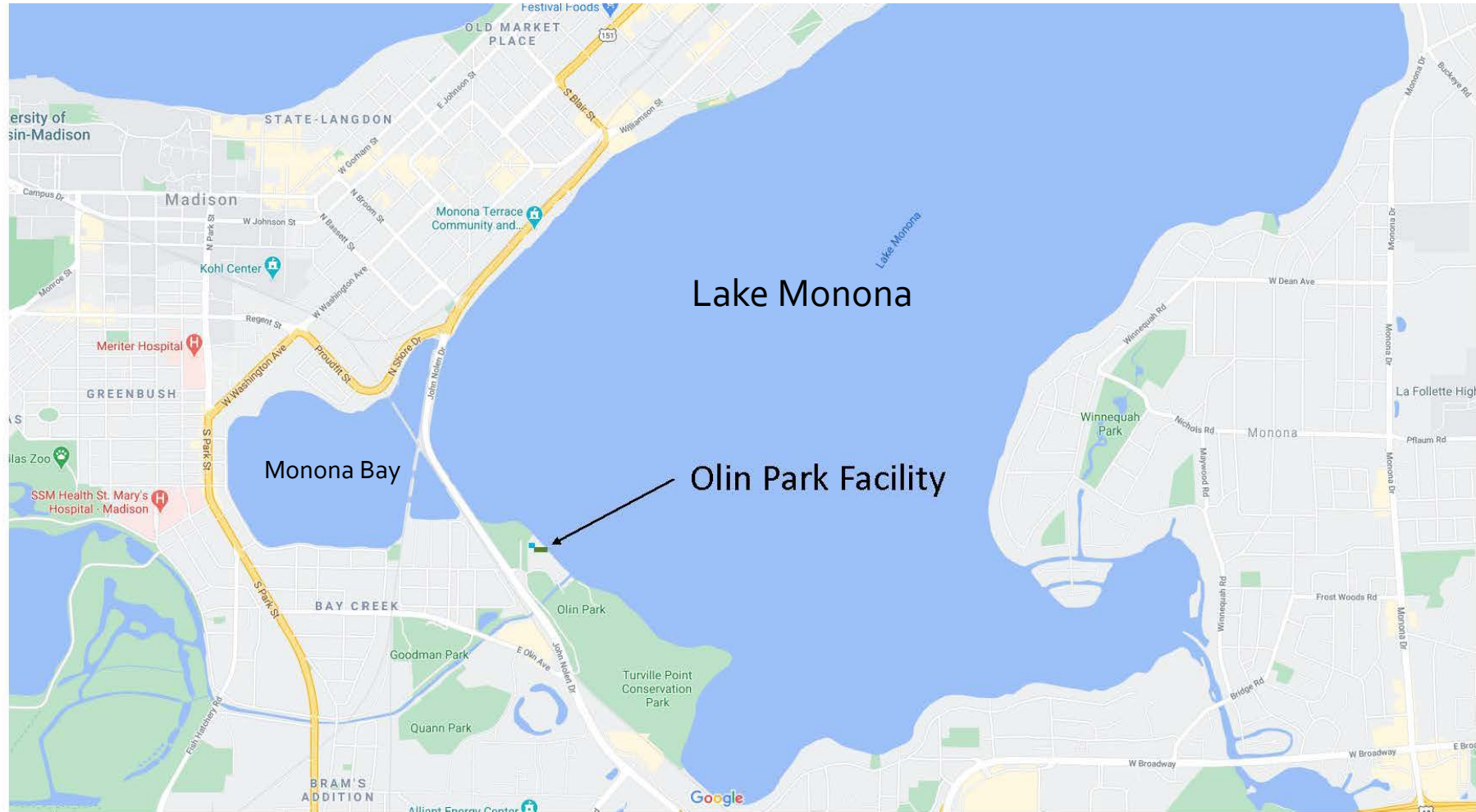
Renovation Project  
Public Meeting  
January 26, 2021



- Project Scope and Intent
- Existing Conditions
- Proposed Improvements
- Project Schedule



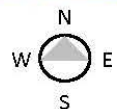
# PROJECT OVERVIEW



Lake Monona

Monona Bay

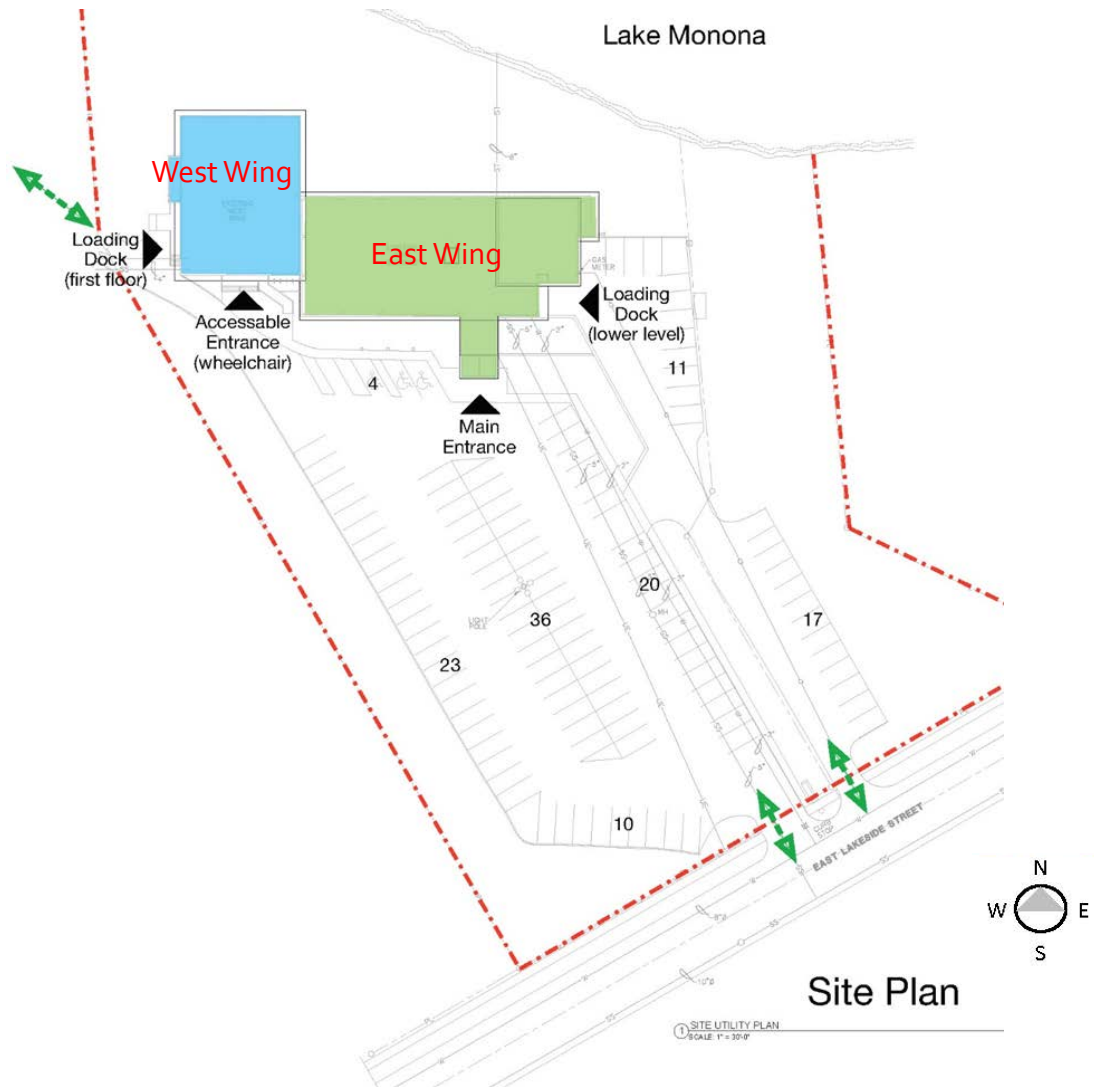
Olin Park Facility



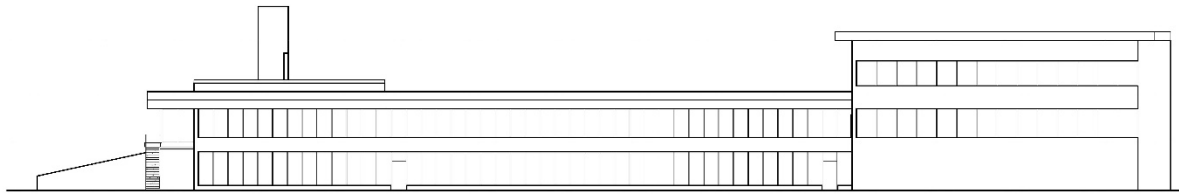
# PROJECT OVERVIEW



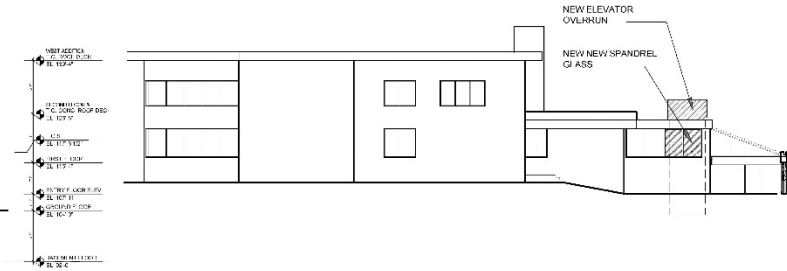
# EXISTING CONDITIONS



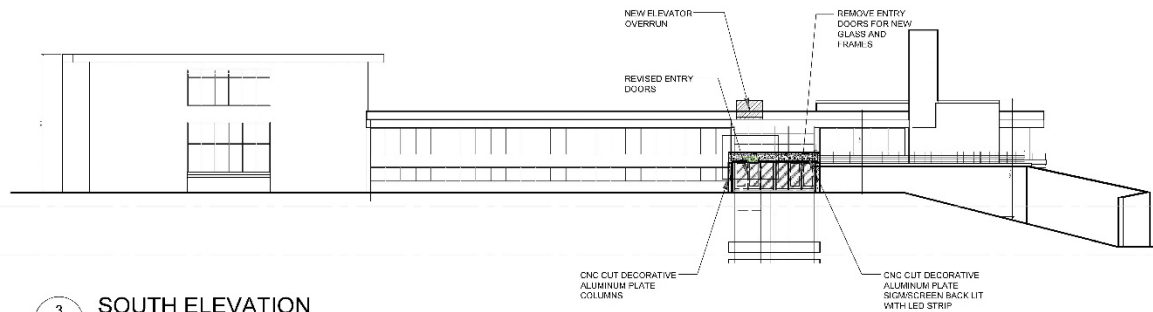
# EXISTING CONDITIONS



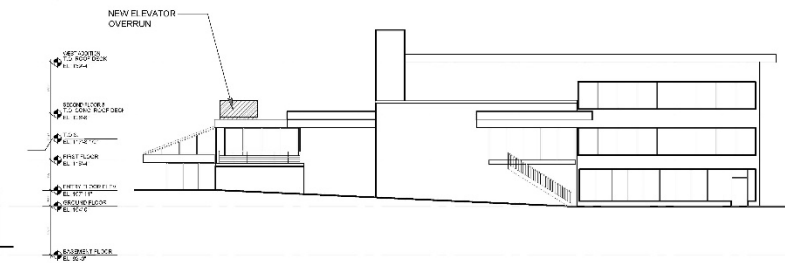
1 NORTH ELEVATION  
SCALE: 1/16" = 1'-0"



2 WEST ELEVATION  
SCALE: 1/16" = 1'-0"



3 SOUTH ELEVATION  
SCALE: 1/16" = 1'-0"



4 EAST ELEVATION  
SCALE: 1/16" = 1'-0"

# EXISTING CONDITIONS

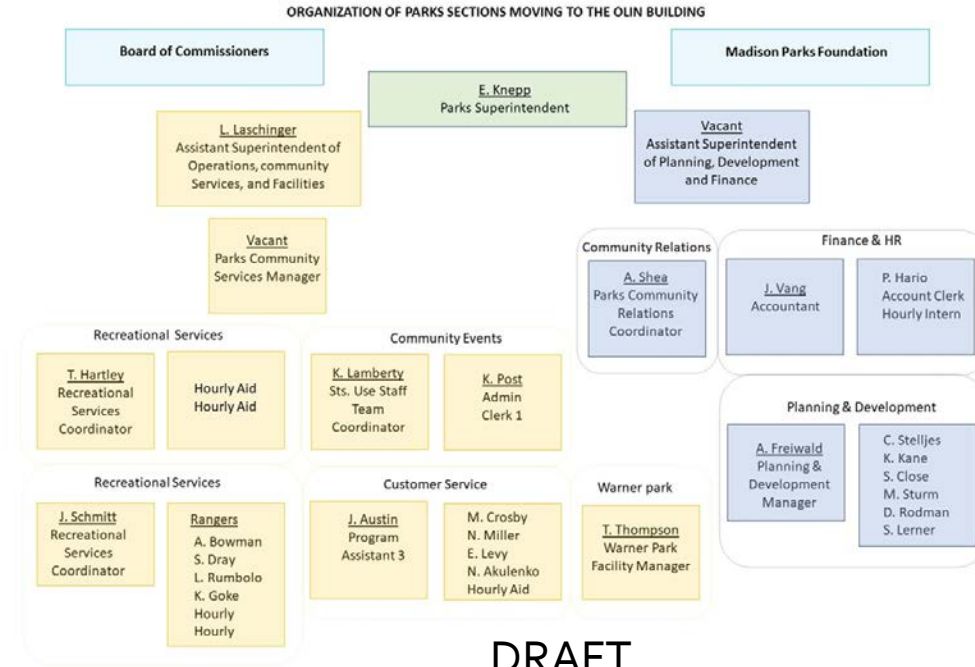


# CONSULTANT TEAM





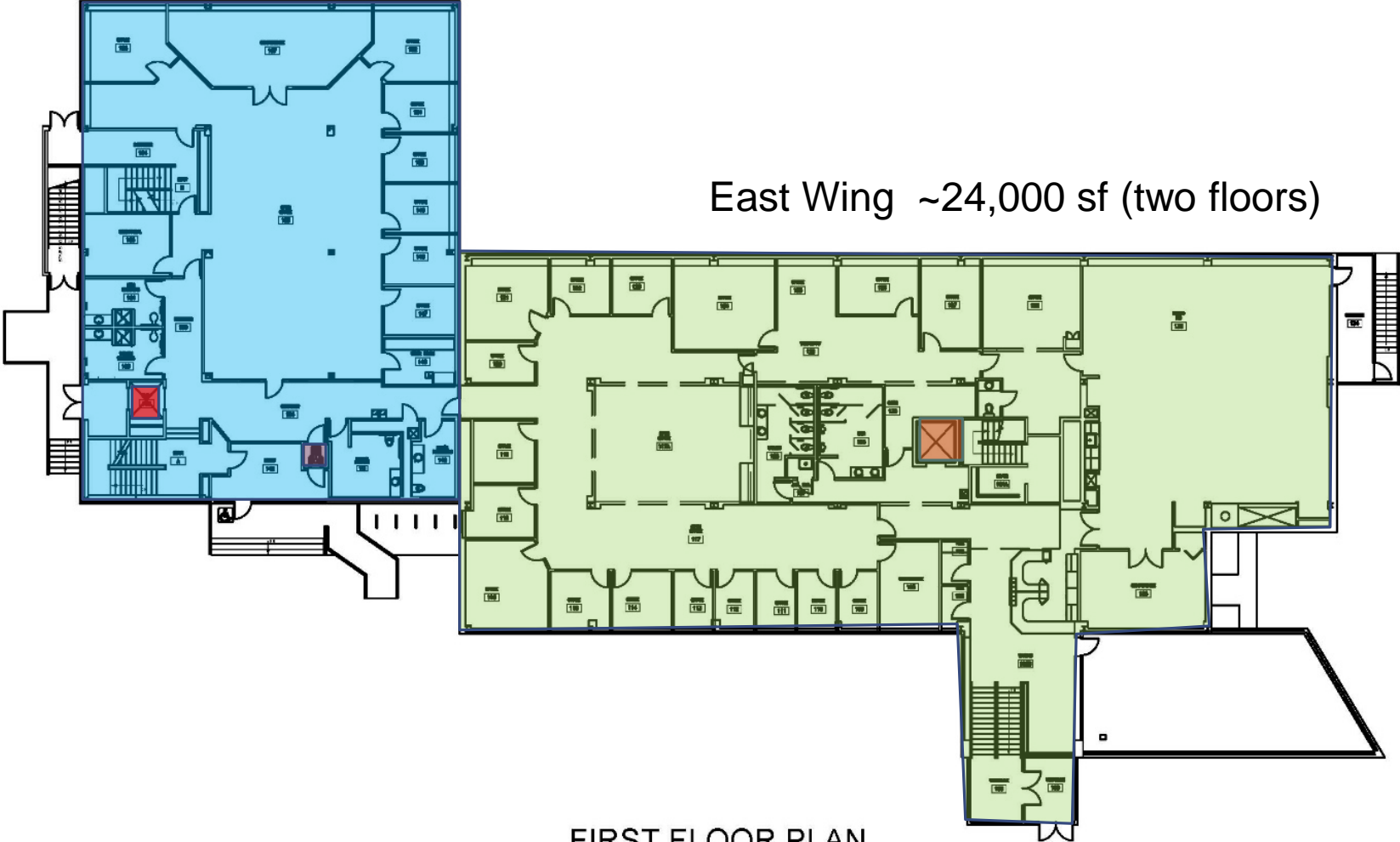
# PRE-DESIGN WORK



# BUILDING PROGRAM

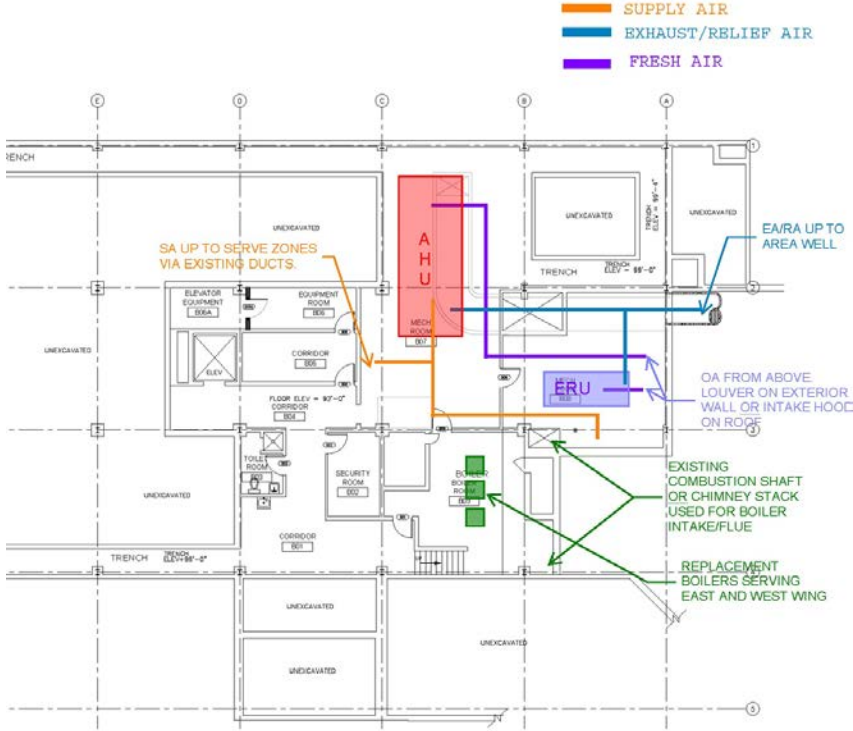
West Wing ~19,000 sf (three floors)

East Wing ~24,000 sf (two floors)



FIRST FLOOR PLAN

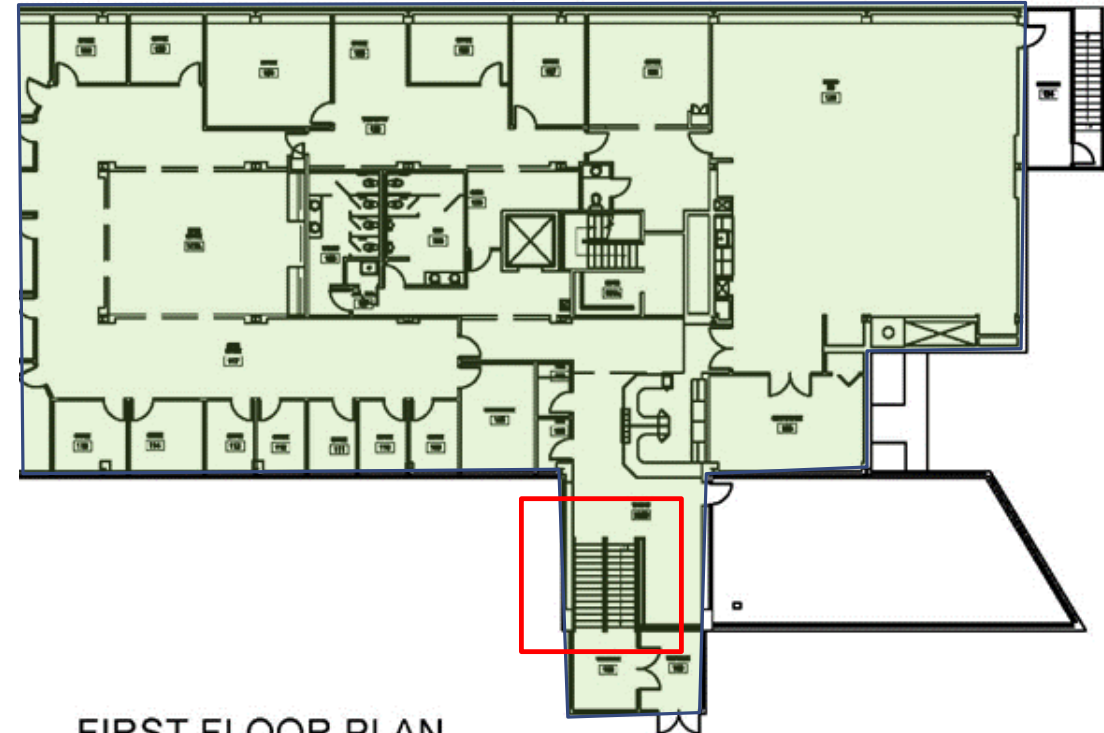
# BUILDING SYSTEMS



DRAFT



# ACCESS IMPROVEMENTS



FIRST FLOOR PLAN

# ACCESS IMPROVEMENTS

## Olin Park Facility



----- Phase1  
Minimum site rework to provide ADA parking & accessible path to the existing main entrance. Both the west and east entrances will be served by this required sitework. The City of Madison is responsible for making both entrances accessible.

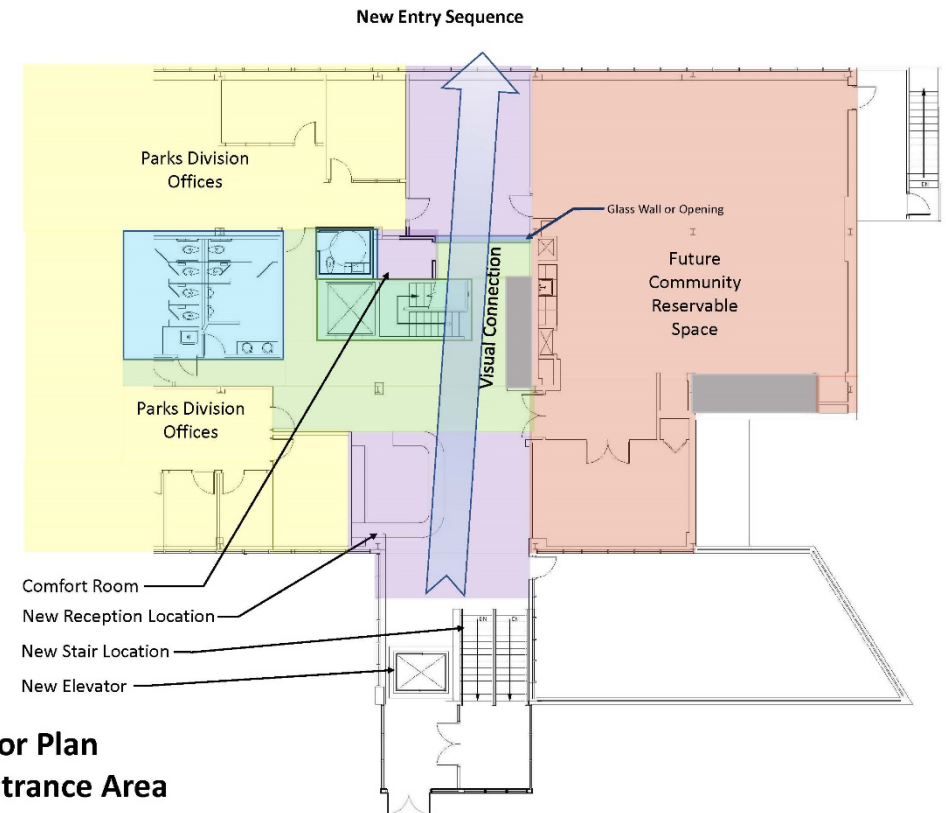
**ADA Parking & Accessible Path to Main Entrance**

Regrade Existing Parking Lot Area = 12,000 sf

Site Plan – Phase 1



# ACCESS IMPROVEMENTS



# FUTURE PROGRAMMING



# FUTURE PLANNING





# PHASE ONE RENOVATION

## SUMMARY

### Project Goals

#### Key Outcomes

- Quality Workspace
- Leader in Sustainability
- Community Focused
- Fiscal Responsibility

### Project Scope

#### Site

- Provide ADA compliant accessibility
- Improve physical & visual access
- Improve entry sequence for all visitors
- Improve usability for Community

#### Architectural Interiors

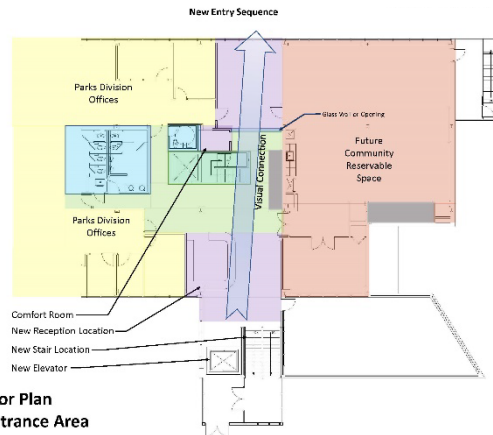
- Provide ADA compliant accessible toilets
- Improved physical & visual access
- Optimize access to nature & natural light
- Provide a comfortable work environment

#### MEP Upgrades

- Replace existing end-of-life MEP equipment
- Optimize energy efficiency while balancing budget issues

#### Fire Protection Retrofit

- Provide Fire Protection through-out bldg.



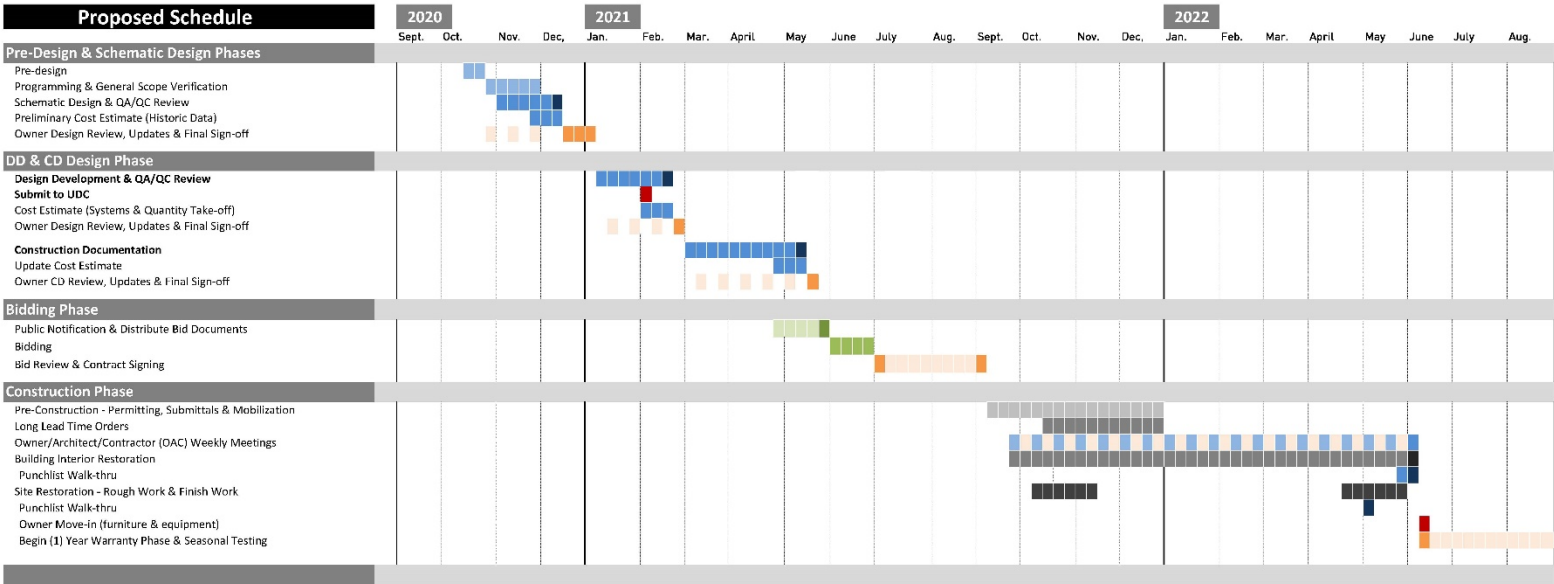
First Floor Plan  
Main Entrance Area

# PROJECT SCHEDULE



## Olin Park Facility Improvements City of Madison Project Schedule

12/15/2020



DRAFT



# QUESTIONS



# PROJECT OVERVIEW

