

- MARKING LEGEND**
- ① PAVEMENT MARKING EPOXY, LINE, 4-INCH (SOLID WHITE)
  - ② PAVEMENT MARKING EPOXY, LINE, 4-INCH (10' LINE 30' GAP)(WHITE)
  - ③ PAVEMENT MARKING EPOXY, LINE, 4-INCH (SOLID YELLOW)
  - ④ PAVEMENT MARKING EPOXY, LINE, 4-INCH (10' LINE 30' GAP)(YELLOW)
  - ⑤ PAVEMENT MARKING EPOXY, DOUBLE LINE, 4-INCH (SOLID YELLOW)
  - ⑥ PAVEMENT MARKING EPOXY, LINE, 8-INCH (SOLID WHITE)
  - ⑦ PAVEMENT MARKING EPOXY, LINE, 8-INCH (2' LINE 6' GAP)( WHITE)
  - ⑧ PAVEMENT MARKING EPOXY, LINE, 8-INCH (5' LINE 5' GAP)( WHITE)
  - ⑨ PAVEMENT MARKING EPOXY, LINE, 12-INCH (SOLID WHITE)
  - ⑩ PAVEMENT MARKING EPOXY, RADIUS LINE, 4-INCH (5' LINE, 5' GAP)(SOLID WHITE)
  - ⑪ PAVEMENT MARKING EPOXY, CROSSWALK, 6-INCH (SOLID WHITE)
  - ⑫ PAVEMENT MARKING EPOXY, STOP LINE, 24-INCH
  - ⑬ PAVEMENT MARKING EPOXY, CURB

- ⑭ PAVEMENT MARKING EPOXY, MEDIAN NOSE
- ⑮ PAVEMENT MARKING EPOXY, PARKING STALL
- ⑯ PAVEMENT MARKING EPOXY, SYMBOL, BIKE SHARROW
- ⑰ PAVEMENT MARKING EPOXY, SYMBOL, BIKE LANE
- ⑱ PAVEMENT MARKING EPOXY, SYMBOL, BIKE STRAIGHT ARROW
- ⑲ PAVEMENT MARKING EPOXY, SYMBOL, BIKE LANE & STRAIGHT ARROW
- ⑳ PAVEMENT MARKING EPOXY, SYMBOL, LEFT ARROW
- ㉑ PAVEMENT MARKING EPOXY, SYMBOL, RIGHT ARROW
- ㉒ PAVEMENT MARKING EPOXY, SYMBOL, STRAIGHT ARROW
- ㉓ PAVEMENT MARKING EPOXY, SYMBOL, STRAIGHT & LEFT ARROW
- ㉔ PAVEMENT MARKING EPOXY, SYMBOL, STRAIGHT & RIGHT ARROW
- ㉕ PAVEMENT MARKING EPOXY, WORD, ONLY
- ㉖ PAVEMENT MARKING EPOXY, SYMBOL, DIAMOND

**DEDICATED BUS LANE. BUS ONLY MARKINGS AND BUS ONLY SIGNAGE REQUIRED.**

**LIMITS OF DISTURBANCE**

**NOTE:**

- SEE CITY OF MADISON SDD 'PAVEMENT MARKING DETAILS , PAGE 1-4' FOR MAINLINE, CROSSWALK, CURB, BIKE LANE, AND RESTRICTED TRAFFIC LANE MARKINGS.
- SEE CONSTRUCTION DETAILS FOR PLATFORM CURB FACE MARKINGS.
- THE WORD "BUS" SHALL BE PLACED 20' BEYOND THE START OF THE LONGITUDINAL MARKINGS, AND PLACE THE WORD "ONLY" AT A 32' SPACING BEYOND THE "BUS" MARKING. SEE PLAN SHEETS FOR SPECIFIC LOCATIONS.
- SEE WISDOT SDD 'PAVEMENT MARKING (TURN LANES)' FOR WORD AND ARROW PLACEMENT AT INTERSECTIONS.

MARK	REVISION	DATE	BY

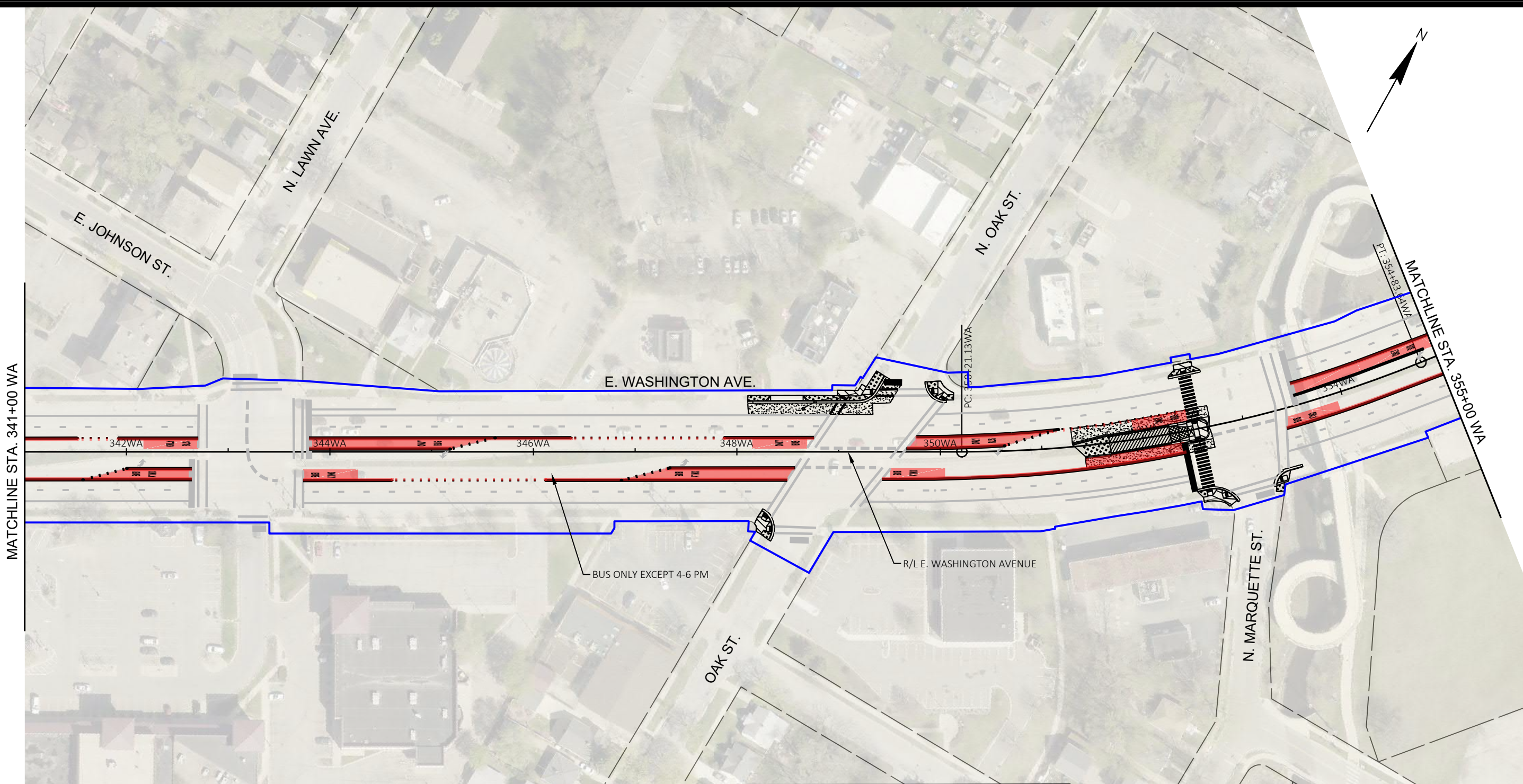
Designed By: AECOM/Date: 2021-12-21  
60631225P Scale: 1"= 100 FT

60631225P  
CITY OF MADISON, DANE COUNTY, WI  
CONTRACT NO: 60631225C

PAVEMENT MARKING & PERMANENT SIGNING  
BUS RAPID TRANSIT  
CITY OF MADISON



60631225P  
M12-E



- MARKING LEGEND**
- ① PAVEMENT MARKING EPOXY, LINE, 4-INCH (SOLID WHITE)
  - ② PAVEMENT MARKING EPOXY, LINE, 4-INCH (10' LINE 30' GAP)(WHITE)
  - ③ PAVEMENT MARKING EPOXY, LINE, 4-INCH (SOLID YELLOW)
  - ④ PAVEMENT MARKING EPOXY, LINE, 4-INCH (10' LINE 30' GAP)(YELLOW)
  - ⑤ PAVEMENT MARKING EPOXY, DOUBLE LINE, 4-INCH (SOLID YELLOW)
  - ⑥ PAVEMENT MARKING EPOXY, LINE, 8-INCH (SOLID WHITE)
  - ⑦ PAVEMENT MARKING EPOXY, LINE, 8-INCH (2' LINE 6' GAP)( WHITE)
  - ⑧ PAVEMENT MARKING EPOXY, LINE, 8-INCH (5' LINE 5' GAP)( WHITE)
  - ⑨ PAVEMENT MARKING EPOXY, LINE, 12-INCH (SOLID WHITE)
  - ⑩ PAVEMENT MARKING EPOXY, RADIUS LINE, 4-INCH (5' LINE, 5' GAP)(SOLID WHITE)
  - ⑪ PAVEMENT MARKING EPOXY, CROSSWALK, 6-INCH (SOLID WHITE)
  - ⑫ PAVEMENT MARKING EPOXY, STOP LINE, 24-INCH
  - ⑬ PAVEMENT MARKING EPOXY, CURB


- ⑭ PAVEMENT MARKING EPOXY, MEDIAN NOSE
- ⑮ PAVEMENT MARKING EPOXY, PARKING STALL
- ⑯ PAVEMENT MARKING EPOXY, SYMBOL, BIKE SHARROW
- ⑰ PAVEMENT MARKING EPOXY, SYMBOL, BIKE LANE
- ⑱ PAVEMENT MARKING EPOXY, SYMBOL, BIKE STRAIGHT ARROW
- ⑲ PAVEMENT MARKING EPOXY, SYMBOL, BIKE LANE & STRAIGHT ARROW
- ⑳ PAVEMENT MARKING EPOXY, SYMBOL, LEFT ARROW
- ㉑ PAVEMENT MARKING EPOXY, SYMBOL, RIGHT ARROW
- ㉒ PAVEMENT MARKING EPOXY, SYMBOL, STRAIGHT ARROW
- ㉓ PAVEMENT MARKING EPOXY, SYMBOL, STRAIGHT & LEFT ARROW
- ㉔ PAVEMENT MARKING EPOXY, SYMBOL, STRAIGHT & RIGHT ARROW
- ㉕ PAVEMENT MARKING EPOXY, WORD, ONLY
- ㉖ PAVEMENT MARKING EPOXY, SYMBOL, DIAMOND

**DEDICATED BUS LANE. BUS ONLY MARKINGS AND BUS ONLY SIGNAGE REQUIRED.**

**LIMITS OF DISTURBANCE**

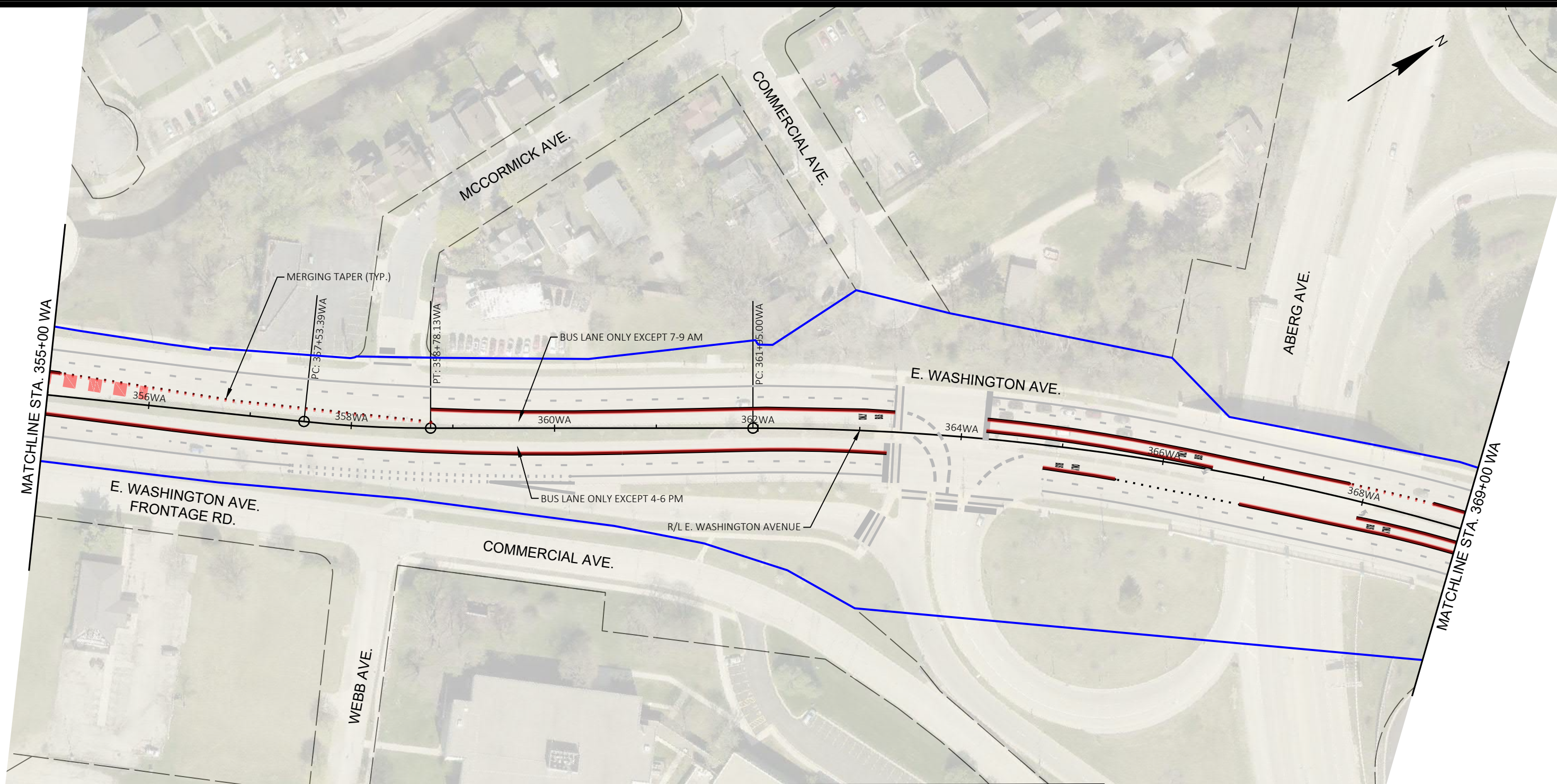
**NOTE:**

- SEE CITY OF MADISON SDD 'PAVEMENT MARKING DETAILS , PAGE 1-4' FOR MAINLINE, CROSSWALK, CURB, BIKE LANE, AND RESTRICTED TRAFFIC LANE MARKINGS.
- SEE CONSTRUCTION DETAILS FOR PLATFORM CURB FACE MARKINGS.
- THE WORD "BUS" SHALL BE PLACED 20' BEYOND THE START OF THE LONGITUDINAL MARKINGS, AND PLACE THE WORD "ONLY" AT A 32' SPACING BEYOND THE "BUS" MARKING. SEE PLAN SHEETS FOR SPECIFIC LOCATIONS.
- SEE WISDOT SDD 'PAVEMENT MARKING (TURN LANES)' FOR WORD AND ARROW PLACEMENT AT INTERSECTIONS.

<b>PAVEMENT MARKING &amp; PERMANENT SIGNING</b> <b>BUS RAPID TRANSIT</b> <b>CITY OF MADISON</b>	60631225P CITY OF MADISON, DANE COUNTY, WI CONTRACT NO: 60631225C
	<b>60631225P</b> <b>M13-E</b>

MARK: \_\_\_\_\_ REVISION: \_\_\_\_\_ DATE: \_\_\_\_\_ BY: \_\_\_\_\_  
 Designed By: AECOM/Date: 2021-12-21  
 60631225P Scale: 1"= 100 FT

FILE NAME: C:\P\WORKING\AECOM\_DS20\_NA\_2019\MICHAEL.SCHNEIDERZ@AECOM.COM\107215\024501\_PM.DWG  
 LAYOUT NAME: 024513\_1.plt LAST PLOT DATE: 2021-12-21



- MARKING LEGEND**
- ① PAVEMENT MARKING EPOXY, LINE, 4-INCH (SOLID WHITE)
  - ② PAVEMENT MARKING EPOXY, LINE, 4-INCH (10' LINE 30' GAP)(WHITE)
  - ③ PAVEMENT MARKING EPOXY, LINE, 4-INCH (SOLID YELLOW)
  - ④ PAVEMENT MARKING EPOXY, LINE, 4-INCH (10' LINE 30' GAP)(YELLOW)
  - ⑤ PAVEMENT MARKING EPOXY, DOUBLE LINE, 4-INCH (SOLID YELLOW)
  - ⑥ PAVEMENT MARKING EPOXY, LINE, 8-INCH (SOLID WHITE)
  - ⑦ PAVEMENT MARKING EPOXY, LINE, 8-INCH (2' LINE 6' GAP)( WHITE)
  - ⑧ PAVEMENT MARKING EPOXY, LINE, 8-INCH (5' LINE 5' GAP)( WHITE)
  - ⑨ PAVEMENT MARKING EPOXY, LINE, 12-INCH (SOLID WHITE)
  - ⑩ PAVEMENT MARKING EPOXY, RADIUS LINE, 4-INCH (5' LINE, 5' GAP)(SOLID WHITE)
  - ⑪ PAVEMENT MARKING EPOXY, CROSSWALK, 6-INCH (SOLID WHITE)
  - ⑫ PAVEMENT MARKING EPOXY, STOP LINE, 24-INCH
  - ⑬ PAVEMENT MARKING EPOXY, CURB

- ⑭ PAVEMENT MARKING EPOXY, MEDIAN NOSE
- ⑮ PAVEMENT MARKING EPOXY, PARKING STALL
- ⑯ PAVEMENT MARKING EPOXY, SYMBOL, BIKE SHARROW
- ⑰ PAVEMENT MARKING EPOXY, SYMBOL, BIKE LANE
- ⑱ PAVEMENT MARKING EPOXY, SYMBOL, BIKE STRAIGHT ARROW
- ⑲ PAVEMENT MARKING EPOXY, SYMBOL, BIKE LANE & STRAIGHT ARROW
- ⑳ PAVEMENT MARKING EPOXY, SYMBOL, LEFT ARROW
- ㉑ PAVEMENT MARKING EPOXY, SYMBOL, RIGHT ARROW
- ㉒ PAVEMENT MARKING EPOXY, SYMBOL, STRAIGHT ARROW
- ㉓ PAVEMENT MARKING EPOXY, SYMBOL, STRAIGHT & LEFT ARROW
- ㉔ PAVEMENT MARKING EPOXY, SYMBOL, STRAIGHT & RIGHT ARROW
- ㉕ PAVEMENT MARKING EPOXY, WORD, ONLY
- ㉖ PAVEMENT MARKING EPOXY, SYMBOL, DIAMOND

**DEDICATED BUS LANE. BUS ONLY MARKINGS AND BUS ONLY SIGNAGE REQUIRED.**

**LIMITS OF DISTURBANCE**

**NOTE:**

- SEE CITY OF MADISON SDD 'PAVEMENT MARKING DETAILS , PAGE 1-4' FOR MAINLINE, CROSSWALK, CURB, BIKE LANE, AND RESTRICTED TRAFFIC LANE MARKINGS.
- SEE CONSTRUCTION DETAILS FOR PLATFORM CURB FACE MARKINGS.
- THE WORD "BUS" SHALL BE PLACED 20' BEYOND THE START OF THE LONGITUDINAL MARKINGS, AND PLACE THE WORD "ONLY" AT A 32' SPACING BEYOND THE "BUS" MARKING. SEE PLAN SHEETS FOR SPECIFIC LOCATIONS.
- SEE WISDOT SDD 'PAVEMENT MARKING (TURN LANES)' FOR WORD AND ARROW PLACEMENT AT INTERSECTIONS.

MARK	REVISION	DATE	BY
60631225P	Designed By: AECOM	Date: 2021-12-21	60631225P
Scale: 1"= 100 FT			

60631225P

PAVEMENT MARKING & PERMANENT SIGNING

BUS RAPID TRANSIT

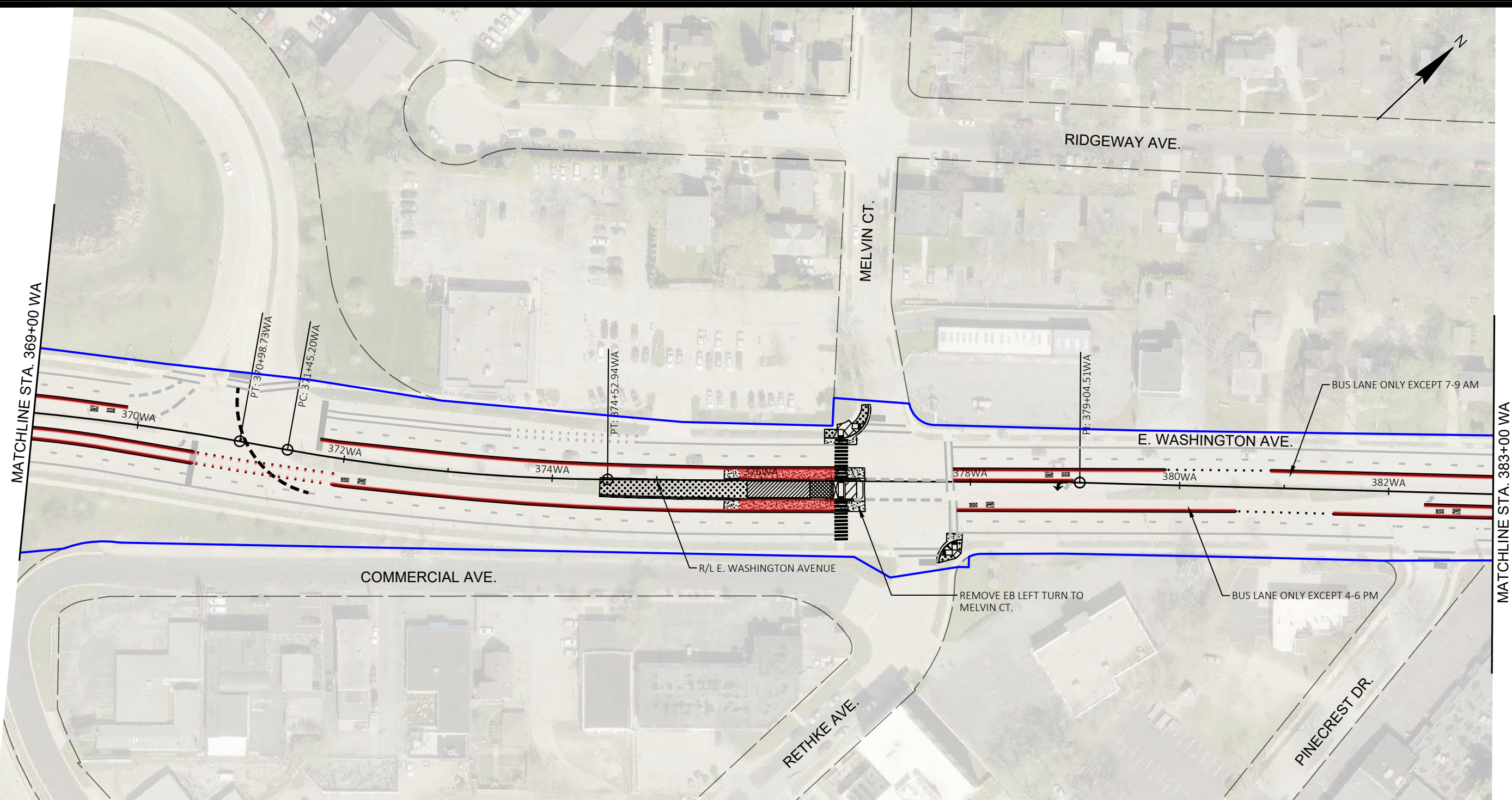
CITY OF MADISON

CITY OF MADISON, DANE COUNTY, WI

CONTRACT NO: 60631225C

60631225P

M14-E



- MARKING LEGEND**
- ① PAVEMENT MARKING EPOXY, LINE, 4-INCH (SOLID WHITE)
  - ② PAVEMENT MARKING EPOXY, LINE, 4-INCH (10' LINE 30' GAP)(WHITE)
  - ③ PAVEMENT MARKING EPOXY, LINE, 4-INCH (SOLID YELLOW)
  - ④ PAVEMENT MARKING EPOXY, LINE, 4-INCH (10' LINE 30' GAP)(YELLOW)
  - ⑤ PAVEMENT MARKING EPOXY, DOUBLE LINE, 4-INCH (SOLID YELLOW)
  - ⑥ PAVEMENT MARKING EPOXY, LINE, 8-INCH (SOLID WHITE)
  - ⑦ PAVEMENT MARKING EPOXY, LINE, 8-INCH (2' LINE 6' GAP)( WHITE)
  - ⑧ PAVEMENT MARKING EPOXY, LINE, 8-INCH (5' LINE 5' GAP)( WHITE)
  - ⑨ PAVEMENT MARKING EPOXY, LINE, 12-INCH (SOLID WHITE)
  - ⑩ PAVEMENT MARKING EPOXY, RADIUS LINE, 4-INCH (5' LINE, 5' GAP)(SOLID WHITE)
  - ⑪ PAVEMENT MARKING EPOXY, CROSSWALK, 6-INCH (SOLID WHITE)
  - ⑫ PAVEMENT MARKING EPOXY, STOP LINE, 24-INCH
  - ⑬ PAVEMENT MARKING EPOXY, CURB


- ⑭ PAVEMENT MARKING EPOXY, MEDIAN NOSE
- ⑮ PAVEMENT MARKING EPOXY, PARKING STALL
- ⑯ PAVEMENT MARKING EPOXY, SYMBOL, BIKE SHARROW
- ⑰ PAVEMENT MARKING EPOXY, SYMBOL, BIKE LANE
- ⑱ PAVEMENT MARKING EPOXY, SYMBOL, BIKE STRAIGHT ARROW
- ⑲ PAVEMENT MARKING EPOXY, SYMBOL, BIKE LANE & STRAIGHT ARROW
- ⑳ PAVEMENT MARKING EPOXY, SYMBOL, LEFT ARROW
- ㉑ PAVEMENT MARKING EPOXY, SYMBOL, RIGHT ARROW
- ㉒ PAVEMENT MARKING EPOXY, SYMBOL, STRAIGHT ARROW
- ㉓ PAVEMENT MARKING EPOXY, SYMBOL, STRAIGHT & LEFT ARROW
- ㉔ PAVEMENT MARKING EPOXY, SYMBOL, STRAIGHT & RIGHT ARROW
- ㉕ PAVEMENT MARKING EPOXY, WORD, ONLY
- ㉖ PAVEMENT MARKING EPOXY, SYMBOL, DIAMOND

**DEDICATED BUS LANE. BUS ONLY MARKINGS AND BUS ONLY SIGNAGE REQUIRED.**

**LIMITS OF DISTURBANCE**

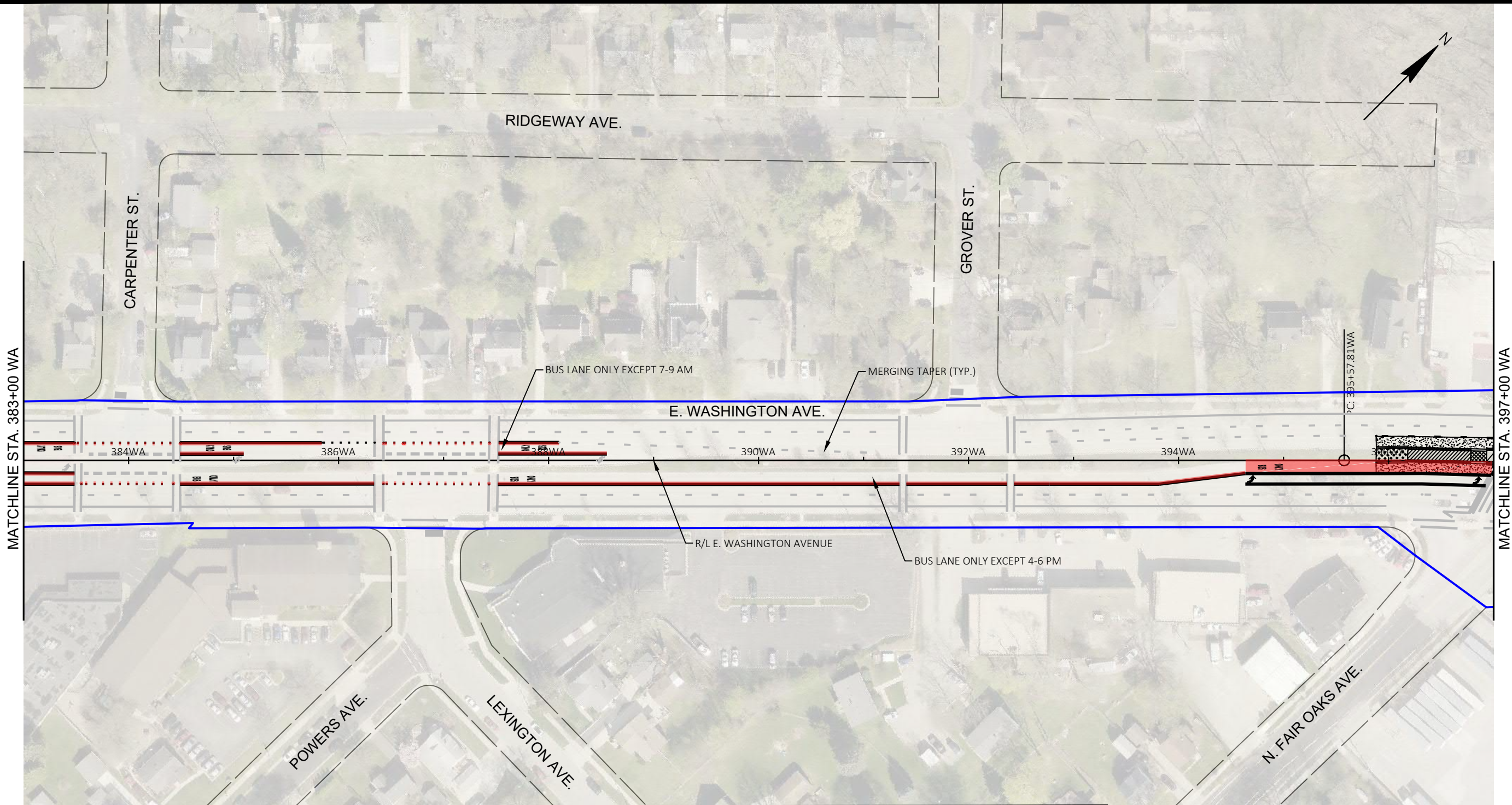
**NOTE:**

- SEE CITY OF MADISON SDD 'PAVEMENT MARKING DETAILS , PAGE 1-4' FOR MAINLINE, CROSSWALK, CURB, BIKE LANE, AND RESTRICTED TRAFFIC LANE MARKINGS.
- SEE CONSTRUCTION DETAILS FOR PLATFORM CURB FACE MARKINGS.
- THE WORD "BUS" SHALL BE PLACED 20' BEYOND THE START OF THE LONGITUDINAL MARKINGS, AND PLACE THE WORD "ONLY" AT A 32' SPACING BEYOND THE "BUS" MARKING. SEE PLAN SHEETS FOR SPECIFIC LOCATIONS.
- SEE WISDOT SDD 'PAVEMENT MARKING (TURN LANES)' FOR WORD AND ARROW PLACEMENT AT INTERSECTIONS.

<b>PAVEMENT MARKING &amp; PERMANENT SIGNING</b> <b>BUS RAPID TRANSIT</b> <b>CITY OF MADISON</b>	60631225P CITY OF MADISON, DANE COUNTY, WI CONTRACT NO: 60631225C
	60631225P <b>M15-E</b>

MARK: \_\_\_\_\_ REVISION: \_\_\_\_\_ DATE: \_\_\_\_\_ BY: \_\_\_\_\_  
 Designed By: AECOM/Date: 2021-12-21  
 60631225P Scale: 1"= 100 FT

FILE NAME : C:\P\WORKING\AECOM\_DS20\_NA\_2019\MICHAEL.SCHNEIDERZ@AECOM.COM\0107215\024501\_PM.DWG  
 LAYOUT NAME - 024515\_1.plt LAST PLOT DATE - 2021-12-21



- MARKING LEGEND**
- ① PAVEMENT MARKING EPOXY, LINE, 4-INCH (SOLID WHITE)
  - ② PAVEMENT MARKING EPOXY, LINE, 4-INCH (10' LINE 30' GAP)(WHITE)
  - ③ PAVEMENT MARKING EPOXY, LINE, 4-INCH (SOLID YELLOW)
  - ④ PAVEMENT MARKING EPOXY, LINE, 4-INCH (10' LINE 30' GAP)(YELLOW)
  - ⑤ PAVEMENT MARKING EPOXY, DOUBLE LINE, 4-INCH (SOLID YELLOW)
  - ⑥ PAVEMENT MARKING EPOXY, LINE, 8-INCH (SOLID WHITE)
  - ⑦ PAVEMENT MARKING EPOXY, LINE, 8-INCH (2' LINE 6' GAP)( WHITE)
  - ⑧ PAVEMENT MARKING EPOXY, LINE, 8-INCH (5' LINE 5' GAP)( WHITE)
  - ⑨ PAVEMENT MARKING EPOXY, LINE, 12-INCH (SOLID WHITE)
  - ⑩ PAVEMENT MARKING EPOXY, RADIUS LINE, 4-INCH (5' LINE, 5' GAP)(SOLID WHITE)
  - ⑪ PAVEMENT MARKING EPOXY, CROSSWALK, 6-INCH (SOLID WHITE)
  - ⑫ PAVEMENT MARKING EPOXY, STOP LINE, 24-INCH
  - ⑬ PAVEMENT MARKING EPOXY, CURB


- ⑭ PAVEMENT MARKING EPOXY, MEDIAN NOSE
- ⑮ PAVEMENT MARKING EPOXY, PARKING STALL
- ⑯ PAVEMENT MARKING EPOXY, SYMBOL, BIKE SHARROW
- ⑰ PAVEMENT MARKING EPOXY, SYMBOL, BIKE LANE
- ⑱ PAVEMENT MARKING EPOXY, SYMBOL, BIKE STRAIGHT ARROW
- ⑲ PAVEMENT MARKING EPOXY, SYMBOL, BIKE LANE & STRAIGHT ARROW
- ⑳ PAVEMENT MARKING EPOXY, SYMBOL, LEFT ARROW
- ㉑ PAVEMENT MARKING EPOXY, SYMBOL, RIGHT ARROW
- ㉒ PAVEMENT MARKING EPOXY, SYMBOL, STRAIGHT ARROW
- ㉓ PAVEMENT MARKING EPOXY, SYMBOL, STRAIGHT & LEFT ARROW
- ㉔ PAVEMENT MARKING EPOXY, SYMBOL, STRAIGHT & RIGHT ARROW
- ㉕ PAVEMENT MARKING EPOXY, WORD, ONLY
- ㉖ PAVEMENT MARKING EPOXY, SYMBOL, DIAMOND

**DEDICATED BUS LANE. BUS ONLY MARKINGS AND BUS ONLY SIGNAGE REQUIRED.**

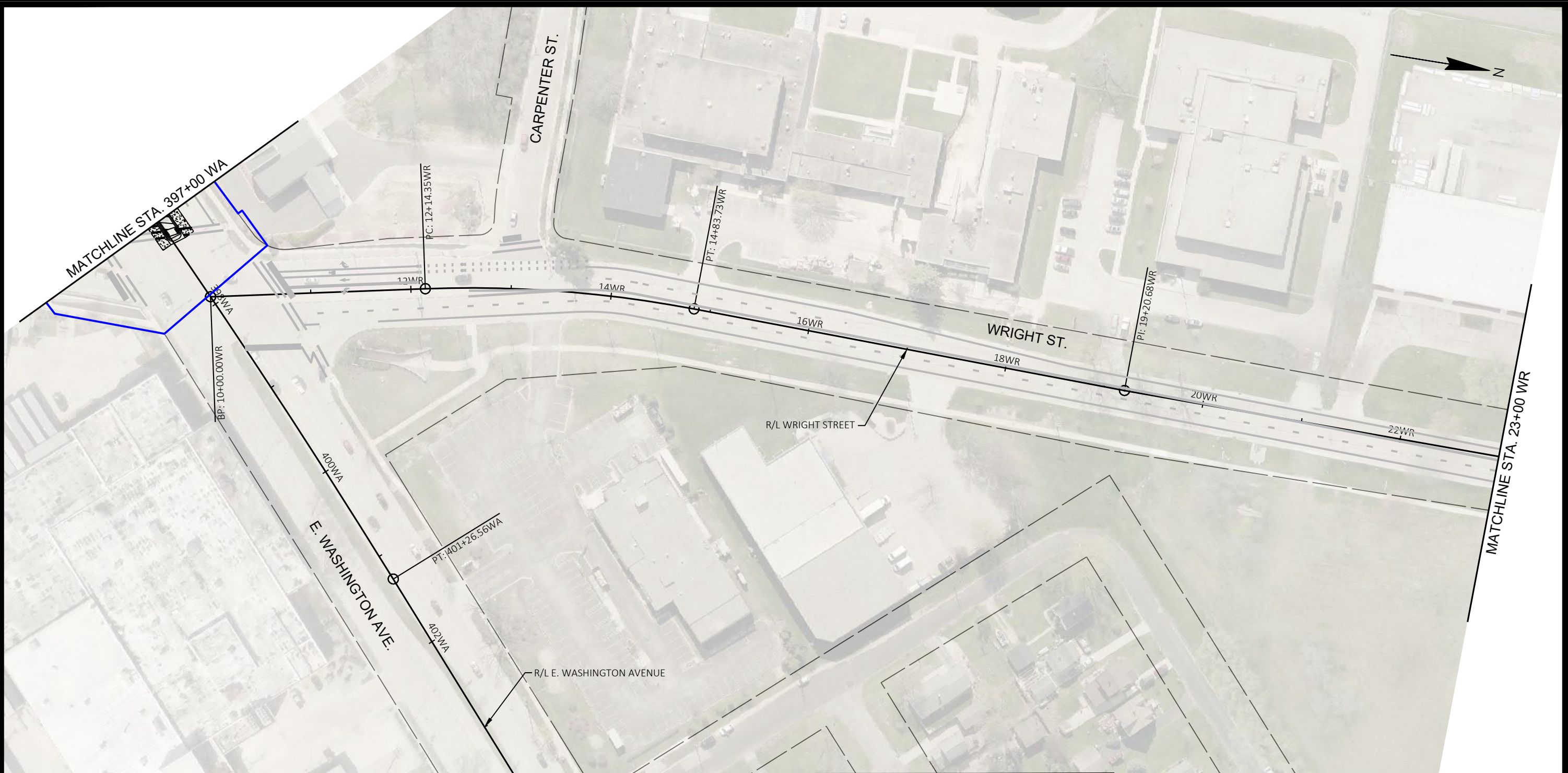
**LIMITS OF DISTURBANCE**

**NOTE:**

- SEE CITY OF MADISON SDD 'PAVEMENT MARKING DETAILS , PAGE 1-4' FOR MAINLINE, CROSSWALK, CURB, BIKE LANE, AND RESTRICTED TRAFFIC LANE MARKINGS.
- SEE CONSTRUCTION DETAILS FOR PLATFORM CURB FACE MARKINGS.
- THE WORD "BUS" SHALL BE PLACED 20' BEYOND THE START OF THE LONGITUDINAL MARKINGS, AND PLACE THE WORD "ONLY" AT A 32' SPACING BEYOND THE "BUS" MARKING. SEE PLAN SHEETS FOR SPECIFIC LOCATIONS.
- SEE WISDOT SDD 'PAVEMENT MARKING (TURN LANES)' FOR WORD AND ARROW PLACEMENT AT INTERSECTIONS.

<b>PAVEMENT MARKING &amp; PERMANENT SIGNING</b> <b>BUS RAPID TRANSIT</b> <b>CITY OF MADISON</b>	60631225P CITY OF MADISON, DANE COUNTY, WI CONTRACT NO: 60631225C
	60631225P <b>M16-E</b>

MARK: 60631225P  
 REVISION: 2021-12-21  
 DATE: 2021-12-21  
 Scale: 1"= 100 FT  
 Designed By: AECOM  
 FILE NAME: C:\P\WORKING\AECOM\_DS20\_NA\_2019\MICHAEL.SCHNEIDERZ@AECOM.COM\0107215\024501\_PM.DWG  
 LAYOUT NAME: 024516.plt  
 LAST PLOT DATE: 2021-12-21



- MARKING LEGEND**
- ① PAVEMENT MARKING EPOXY, LINE, 4-INCH (SOLID WHITE)
  - ② PAVEMENT MARKING EPOXY, LINE, 4-INCH (10' LINE 30' GAP)(WHITE)
  - ③ PAVEMENT MARKING EPOXY, LINE, 4-INCH (SOLID YELLOW)
  - ④ PAVEMENT MARKING EPOXY, LINE, 4-INCH (10' LINE 30' GAP)(YELLOW)
  - ⑤ PAVEMENT MARKING EPOXY, DOUBLE LINE, 4-INCH (SOLID YELLOW)
  - ⑥ PAVEMENT MARKING EPOXY, LINE, 8-INCH (SOLID WHITE)
  - ⑦ PAVEMENT MARKING EPOXY, LINE, 8-INCH (2' LINE 6' GAP)( WHITE)
  - ⑧ PAVEMENT MARKING EPOXY, LINE, 8-INCH (5' LINE 5' GAP)( WHITE)
  - ⑨ PAVEMENT MARKING EPOXY, LINE, 12-INCH (SOLID WHITE)
  - ⑩ PAVEMENT MARKING EPOXY, RADIUS LINE, 4-INCH (5' LINE, 5' GAP)(SOLID WHITE)
  - ⑪ PAVEMENT MARKING EPOXY, CROSSWALK, 6-INCH (SOLID WHITE)
  - ⑫ PAVEMENT MARKING EPOXY, STOP LINE, 24-INCH
  - ⑬ PAVEMENT MARKING EPOXY, CURB

- ⑭ PAVEMENT MARKING EPOXY, MEDIAN NOSE
- ⑮ PAVEMENT MARKING EPOXY, PARKING STALL
- ⑯ PAVEMENT MARKING EPOXY, SYMBOL, BIKE SHARROW
- ⑰ PAVEMENT MARKING EPOXY, SYMBOL, BIKE LANE
- ⑱ PAVEMENT MARKING EPOXY, SYMBOL, BIKE STRAIGHT ARROW
- ⑲ PAVEMENT MARKING EPOXY, SYMBOL, BIKE LANE & STRAIGHT ARROW
- ⑳ PAVEMENT MARKING EPOXY, SYMBOL, LEFT ARROW
- ㉑ PAVEMENT MARKING EPOXY, SYMBOL, RIGHT ARROW
- ㉒ PAVEMENT MARKING EPOXY, SYMBOL, STRAIGHT ARROW
- ㉓ PAVEMENT MARKING EPOXY, SYMBOL, STRAIGHT & LEFT ARROW
- ㉔ PAVEMENT MARKING EPOXY, SYMBOL, STRAIGHT & RIGHT ARROW
- ㉕ PAVEMENT MARKING EPOXY, WORD, ONLY
- ㉖ PAVEMENT MARKING EPOXY, SYMBOL, DIAMOND

**DEDICATED BUS LANE. BUS ONLY MARKINGS AND BUS ONLY SIGNAGE REQUIRED.**

**LIMITS OF DISTURBANCE**

**NOTE:**

- SEE CITY OF MADISON SDD 'PAVEMENT MARKING DETAILS , PAGE 1-4' FOR MAINLINE, CROSSWALK, CURB, BIKE LANE, AND RESTRICTED TRAFFIC LANE MARKINGS.
- SEE CONSTRUCTION DETAILS FOR PLATFORM CURB FACE MARKINGS.
- THE WORD "BUS" SHALL BE PLACED 20' BEYOND THE START OF THE LONGITUDINAL MARKINGS, AND PLACE THE WORD "ONLY" AT A 32' SPACING BEYOND THE "BUS" MARKING. SEE PLAN SHEETS FOR SPECIFIC LOCATIONS.
- SEE WISDOT SDD 'PAVEMENT MARKING (TURN LANES)' FOR WORD AND ARROW PLACEMENT AT INTERSECTIONS.

MARK	REVISION	DATE	BY

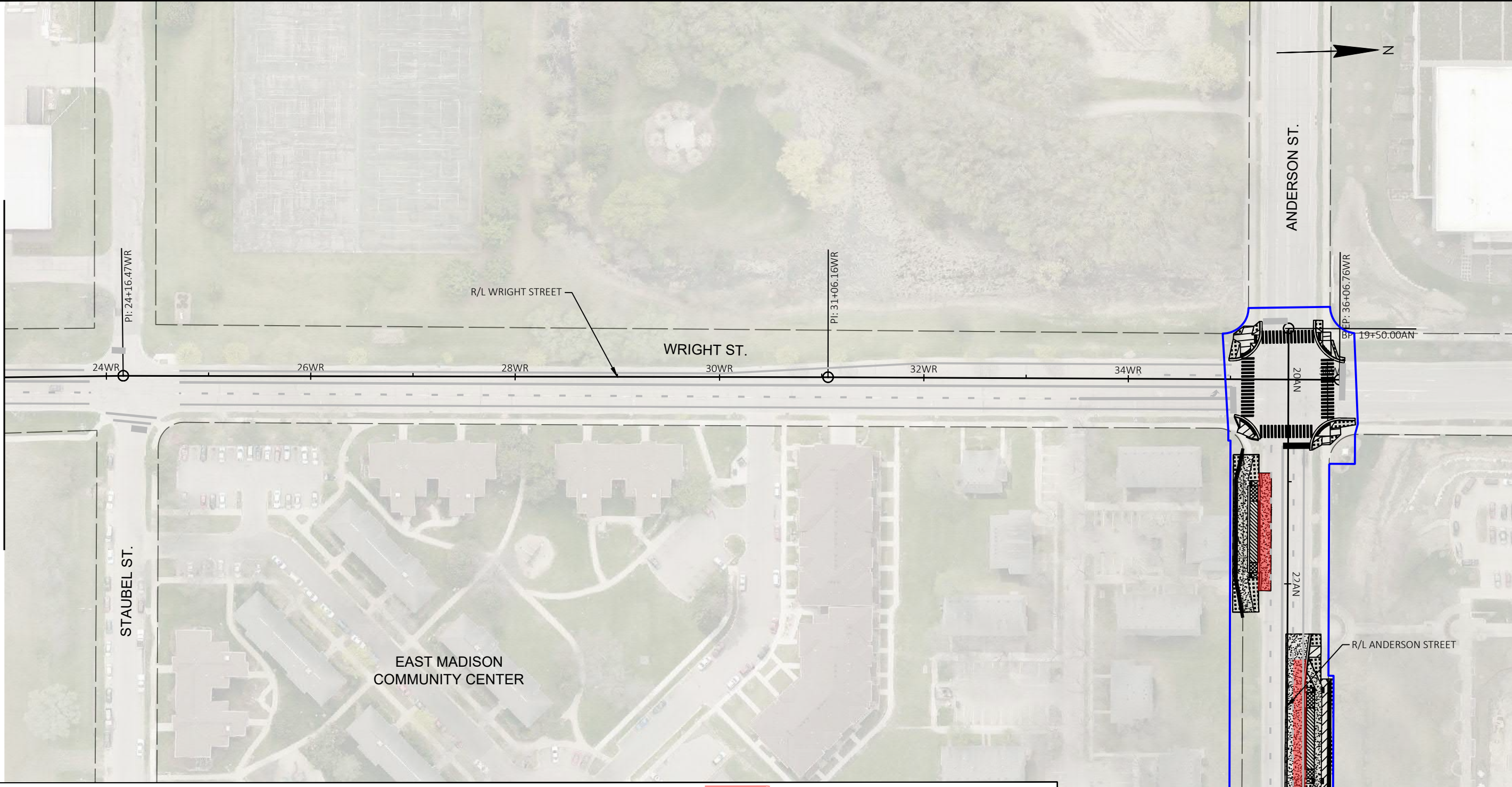
Designed By: AECOM/Date: 2021-12-21  
60631225P Scale: 1"= 100 FT

60631225P  
 CITY OF MADISON  
 BUS RAPID TRANSIT  
 PAVEMENT MARKING & PERMANENT SIGNING  
 CITY OF MADISON, DANE COUNTY, WI  
 CONTRACT NO: 60631225C



60631225P  
 M17-E


MATCHLINE STA. 23+00 WR




MATCHLINE STA. 24+00 AN

- MARKING LEGEND**
- ① PAVEMENT MARKING EPOXY, LINE, 4-INCH (SOLID WHITE)
  - ② PAVEMENT MARKING EPOXY, LINE, 4-INCH (10' LINE 30' GAP)(WHITE)
  - ③ PAVEMENT MARKING EPOXY, LINE, 4-INCH (SOLID YELLOW)
  - ④ PAVEMENT MARKING EPOXY, LINE, 4-INCH (10' LINE 30' GAP)(YELLOW)
  - ⑤ PAVEMENT MARKING EPOXY, DOUBLE LINE, 4-INCH (SOLID YELLOW)
  - ⑥ PAVEMENT MARKING EPOXY, LINE, 8-INCH (SOLID WHITE)
  - ⑦ PAVEMENT MARKING EPOXY, LINE, 8-INCH (2' LINE 6' GAP)( WHITE)
  - ⑧ PAVEMENT MARKING EPOXY, LINE, 8-INCH (5' LINE 5' GAP)( WHITE)
  - ⑨ PAVEMENT MARKING EPOXY, LINE, 12-INCH (SOLID WHITE)
  - ⑩ PAVEMENT MARKING EPOXY, RADIUS LINE, 4-INCH (5' LINE, 5' GAP)(SOLID WHITE)
  - ⑪ PAVEMENT MARKING EPOXY, CROSSWALK, 6-INCH (SOLID WHITE)
  - ⑫ PAVEMENT MARKING EPOXY, STOP LINE, 24-INCH
  - ⑬ PAVEMENT MARKING EPOXY, CURB

- ⑭ PAVEMENT MARKING EPOXY, MEDIAN NOSE
- ⑮ PAVEMENT MARKING EPOXY, PARKING STALL
- ⑯ PAVEMENT MARKING EPOXY, SYMBOL, BIKE SHARROW
- ⑰ PAVEMENT MARKING EPOXY, SYMBOL, BIKE LANE
- ⑱ PAVEMENT MARKING EPOXY, SYMBOL, BIKE STRAIGHT ARROW
- ⑲ PAVEMENT MARKING EPOXY, SYMBOL, BIKE LANE & STRAIGHT ARROW
- ⑳ PAVEMENT MARKING EPOXY, SYMBOL, LEFT ARROW
- ㉑ PAVEMENT MARKING EPOXY, SYMBOL, RIGHT ARROW
- ㉒ PAVEMENT MARKING EPOXY, SYMBOL, STRAIGHT ARROW
- ㉓ PAVEMENT MARKING EPOXY, SYMBOL, STRAIGHT & LEFT ARROW
- ㉔ PAVEMENT MARKING EPOXY, SYMBOL, STRAIGHT & RIGHT ARROW
- ㉕ PAVEMENT MARKING EPOXY, WORD, ONLY
- ㉖ PAVEMENT MARKING EPOXY, SYMBOL, DIAMOND

 DEDICATED BUS LANE. BUS ONLY MARKINGS AND BUS ONLY SIGNAGE REQUIRED.

 LIMITS OF DISTURBANCE

**NOTE:**

- SEE CITY OF MADISON SDD 'PAVEMENT MARKING DETAILS , PAGE 1-4' FOR MAINLINE, CROSSWALK, CURB, BIKE LANE, AND RESTRICTED TRAFFIC LANE MARKINGS.
- SEE CONSTRUCTION DETAILS FOR PLATFORM CURB FACE MARKINGS.
- THE WORD "BUS" SHALL BE PLACED 20' BEYOND THE START OF THE LONGITUDINAL MARKINGS, AND PLACE THE WORD "ONLY" AT A 32' SPACING BEYOND THE "BUS" MARKING. SEE PLAN SHEETS FOR SPECIFIC LOCATIONS.
- SEE WISDOT SDD 'PAVEMENT MARKING (TURN LANES)' FOR WORD AND ARROW PLACEMENT AT INTERSECTIONS.

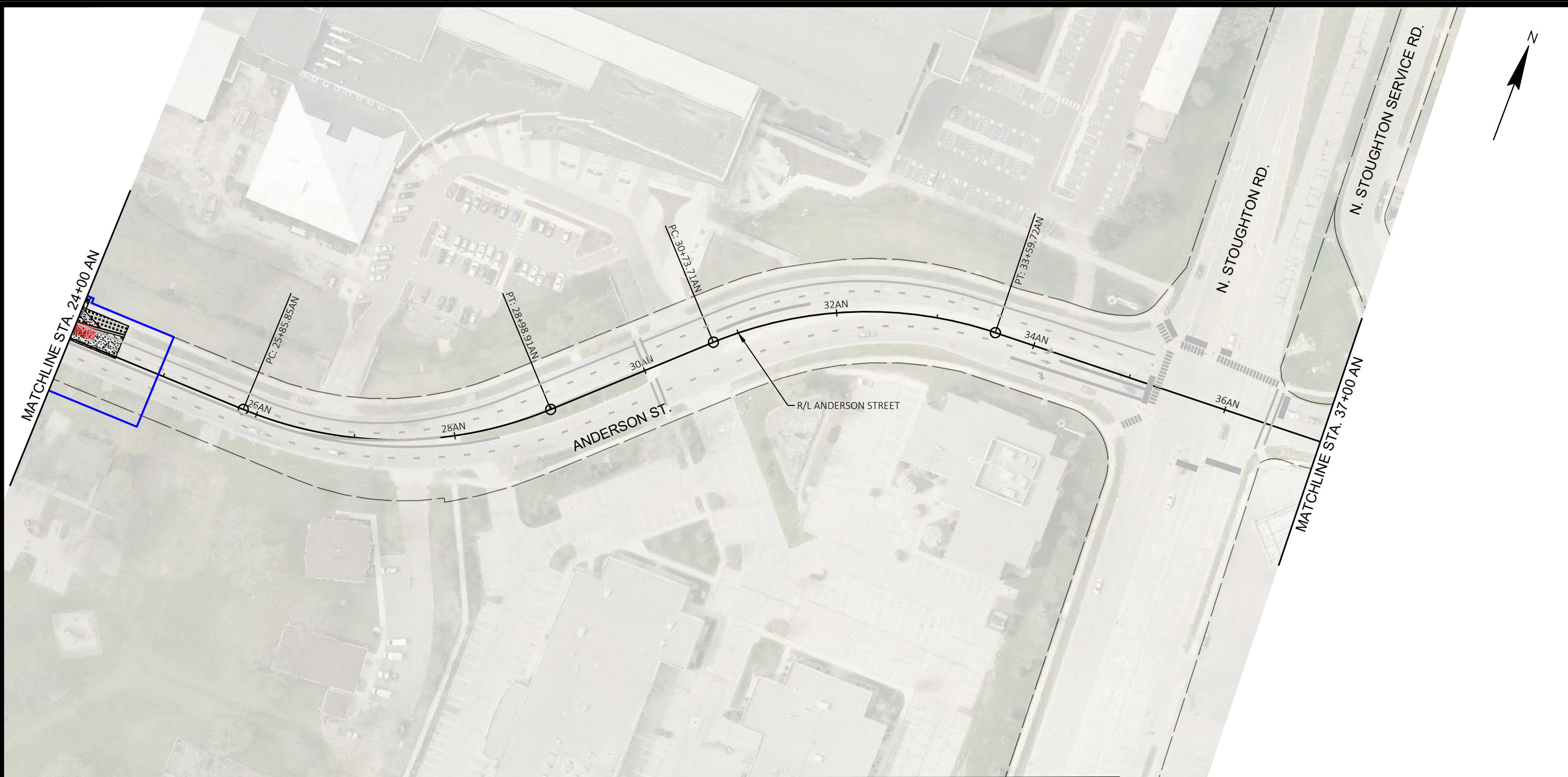
MARK	REVISION	DATE	BY
60631225P	Designed By: AECOM	2021-12-21	
	Date:		
			Scale: 1"= 100 FT

60631225P  
 CITY OF MADISON, DANE COUNTY, WI  
 CONTRACT NO: 60631225C

PAVEMENT MARKING & PERMANENT SIGNING  
 BUS RAPID TRANSIT  
**CITY OF MADISON**



60631225P  
**M18-E**



MARKING LEGEND	
① PAVEMENT MARKING EPOXY, LINE, 4-INCH (SOLID WHITE)	⑭ PAVEMENT MARKING EPOXY, MEDIAN NOSE
② PAVEMENT MARKING EPOXY, LINE, 4-INCH (10' LINE 30' GAP)(WHITE)	⑮ PAVEMENT MARKING EPOXY, PARKING STALL
③ PAVEMENT MARKING EPOXY, LINE, 4-INCH (SOLID YELLOW)	⑯ PAVEMENT MARKING EPOXY, SYMBOL, BIKE SHARROW
④ PAVEMENT MARKING EPOXY, LINE, 4-INCH (10' LINE 30' GAP)(YELLOW)	⑰ PAVEMENT MARKING EPOXY, SYMBOL, BIKE LANE
⑤ PAVEMENT MARKING EPOXY, DOUBLE LINE, 4-INCH (SOLID YELLOW)	⑱ PAVEMENT MARKING EPOXY, SYMBOL, BIKE STRAIGHT ARROW
⑥ PAVEMENT MARKING EPOXY, LINE, 8-INCH (SOLID WHITE)	⑲ PAVEMENT MARKING EPOXY, SYMBOL, BIKE LANE & STRAIGHT ARROW
⑦ PAVEMENT MARKING EPOXY, LINE, 8-INCH (2' LINE 6' GAP)( WHITE)	⑳ PAVEMENT MARKING EPOXY, SYMBOL, LEFT ARROW
⑧ PAVEMENT MARKING EPOXY, LINE, 8-INCH (5' LINE 5' GAP)( WHITE)	㉑ PAVEMENT MARKING EPOXY, SYMBOL, RIGHT ARROW
⑨ PAVEMENT MARKING EPOXY, LINE, 12-INCH (SOLID WHITE)	㉒ PAVEMENT MARKING EPOXY, SYMBOL, STRAIGHT ARROW
⑩ PAVEMENT MARKING EPOXY, RADIUS LINE, 4-INCH (5' LINE, 5' GAP)(SOLID WHITE)	㉓ PAVEMENT MARKING EPOXY, SYMBOL, STRAIGHT & LEFT ARROW
⑪ PAVEMENT MARKING EPOXY, CROSSWALK, 6-INCH (SOLID WHITE)	㉔ PAVEMENT MARKING EPOXY, SYMBOL, STRAIGHT & RIGHT ARROW
⑫ PAVEMENT MARKING EPOXY, STOP LINE, 24-INCH	㉕ PAVEMENT MARKING EPOXY, WORD, ONLY
⑬ PAVEMENT MARKING EPOXY, CURB	㉖ PAVEMENT MARKING EPOXY, SYMBOL, DIAMOND

	DEDICATED BUS LANE. BUS ONLY MARKINGS AND BUS ONLY SIGNAGE REQUIRED.
	LIMITS OF DISTURBANCE

NOTE:

- SEE CITY OF MADISON SDD 'PAVEMENT MARKING DETAILS , PAGE 1-4' FOR MAINLINE, CROSSWALK, CURB, BIKE LANE, AND RESTRICTED TRAFFIC LANE MARKINGS.
- SEE CONSTRUCTION DETAILS FOR PLATFORM CURB FACE MARKINGS.
- THE WORD "BUS" SHALL BE PLACED 20' BEYOND THE START OF THE LONGITUDINAL MARKINGS, AND PLACE THE WORD "ONLY" AT A 32' SPACING BEYOND THE "BUS" MARKING. SEE PLAN SHEETS FOR SPECIFIC LOCATIONS.
- SEE WISDOT SDD 'PAVEMENT MARKING (TURN LANES)' FOR WORD AND ARROW PLACEMENT AT INTERSECTIONS.

60631225P	60631225P
CITY OF MADISON	CITY OF MADISON, DANE COUNTY, WI
BUS RAPID TRANSIT	CONTRACT NO: 60631225C
60631225P	
M19-E	

MARK	REVISION	DATE	BY
60631225P	Designed By: AECOM	2021-12-21	

Scale: 1"= 100 FT

FILE NAME : C:\PWORKING\AECOM\_DS20\_NA\_2019\MICHAEL.SCHNEIDERZ@AECOM.COM\0107215\024501\_PM.DWG  
LAYOUT NAME - 024519\_1.plt  
LAST PLOT DATE - 2021-12-21



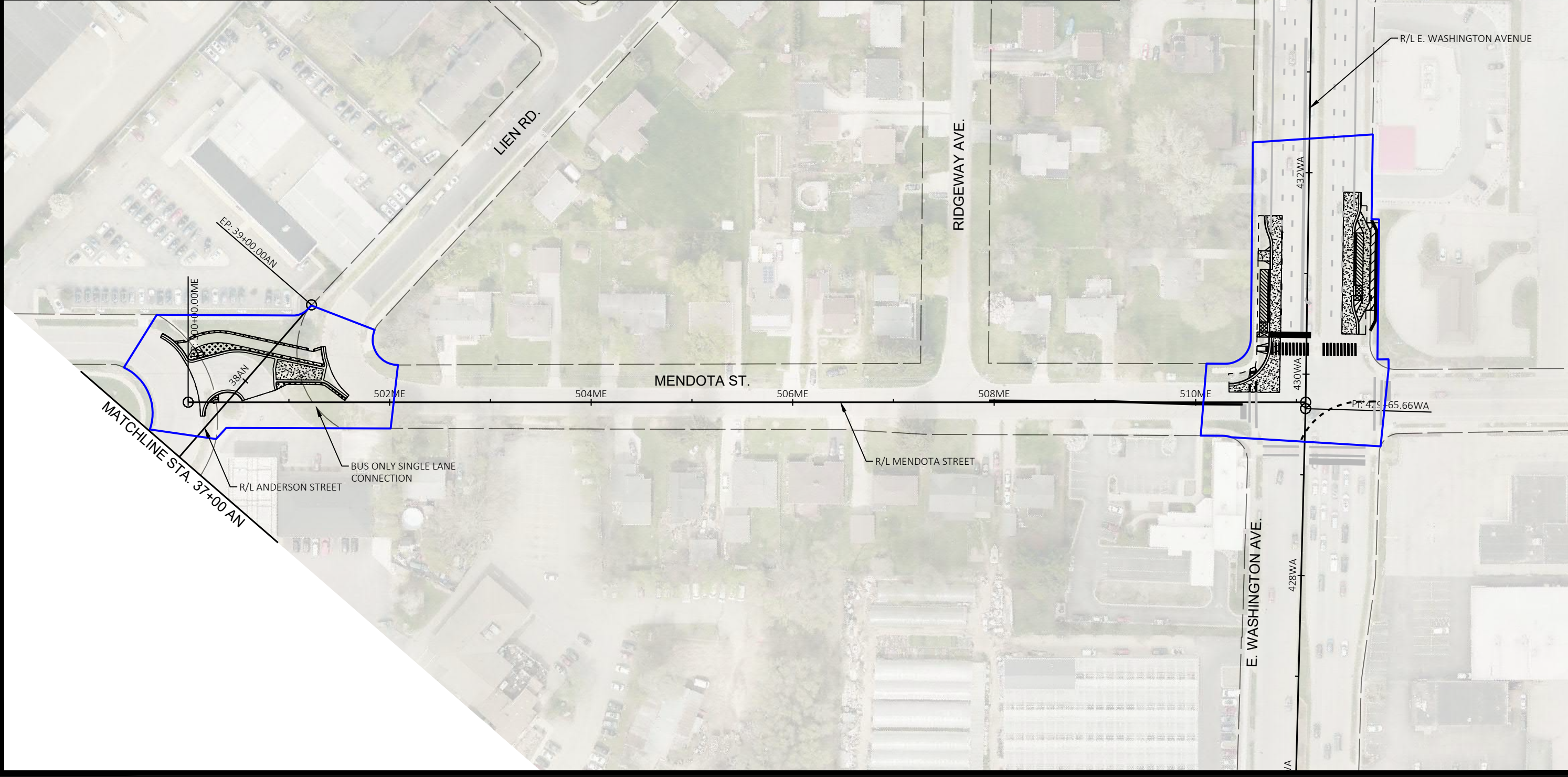
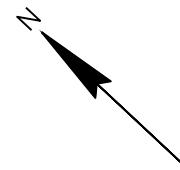
MARKING LEGEND

- ① PAVEMENT MARKING EPOXY, LINE, 4-INCH (SOLID WHITE)
- ② PAVEMENT MARKING EPOXY, LINE, 4-INCH (10' LINE 30' GAP)(WHITE)
- ③ PAVEMENT MARKING EPOXY, LINE, 4-INCH (SOLID YELLOW)
- ④ PAVEMENT MARKING EPOXY, LINE, 4-INCH (10' LINE 30' GAP)(YELLOW)
- ⑤ PAVEMENT MARKING EPOXY, DOUBLE LINE, 4-INCH (SOLID YELLOW)
- ⑥ PAVEMENT MARKING EPOXY, LINE, 8-INCH (SOLID WHITE)
- ⑦ PAVEMENT MARKING EPOXY, LINE, 8-INCH (2' LINE 6' GAP)( WHITE)
- ⑧ PAVEMENT MARKING EPOXY, LINE, 8-INCH (5' LINE 5' GAP)( WHITE)
- ⑨ PAVEMENT MARKING EPOXY, LINE, 12-INCH (SOLID WHITE)
- ⑩ PAVEMENT MARKING EPOXY, RADIUS LINE, 4-INCH (5' LINE, 5' GAP)(SOLID WHITE)
- ⑪ PAVEMENT MARKING EPOXY, CROSSWALK, 6-INCH (SOLID WHITE)
- ⑫ PAVEMENT MARKING EPOXY, STOP LINE, 24-INCH
- ⑬ PAVEMENT MARKING EPOXY, CURB

- ⑭ PAVEMENT MARKING EPOXY, MEDIAN NOSE
- ⑮ PAVEMENT MARKING EPOXY, PARKING STALL
- ⑯ PAVEMENT MARKING EPOXY, SYMBOL, BIKE SHARROW
- ⑰ PAVEMENT MARKING EPOXY, SYMBOL, BIKE LANE
- ⑱ PAVEMENT MARKING EPOXY, SYMBOL, BIKE STRAIGHT ARROW
- ⑲ PAVEMENT MARKING EPOXY, SYMBOL, BIKE LANE & STRAIGHT ARROW
- ⑳ PAVEMENT MARKING EPOXY, SYMBOL, LEFT ARROW
- ㉑ PAVEMENT MARKING EPOXY, SYMBOL, RIGHT ARROW
- ㉒ PAVEMENT MARKING EPOXY, SYMBOL, STRAIGHT ARROW
- ㉓ PAVEMENT MARKING EPOXY, SYMBOL, STRAIGHT & LEFT ARROW
- ㉔ PAVEMENT MARKING EPOXY, SYMBOL, STRAIGHT & RIGHT ARROW
- ㉕ PAVEMENT MARKING EPOXY, WORD, ONLY
- ㉖ PAVEMENT MARKING EPOXY, SYMBOL, DIAMOND

- DEDICATED BUS LANE. BUS ONLY MARKINGS AND BUS ONLY SIGNAGE REQUIRED.
- LIMITS OF DISTURBANCE

NOTE:  
 -SEE CITY OF MADISON SDD 'PAVEMENT MARKING DETAILS , PAGE 1-4' FOR MAINLINE, CROSSWALK, CURB, BIKE LANE, AND RESTRICTED TRAFFIC LANE MARKINGS.  
 -SEE CONSTRUCTION DETAILS FOR PLATFORM CURB FACE MARKINGS.  
 -THE WORD "BUS" SHALL BE PLACED 20' BEYOND THE START OF THE LONGITUDINAL MARKINGS, AND PLACE THE WORD "ONLY" AT A 32' SPACING BEYOND THE "BUS" MARKING. SEE PLAN SHEETS FOR SPECIFIC LOCATIONS.  
 -SEE WISDOT SDD 'PAVEMENT MARKING (TURN LANES)' FOR WORD AND ARROW PLACEMENT AT INTERSECTIONS.



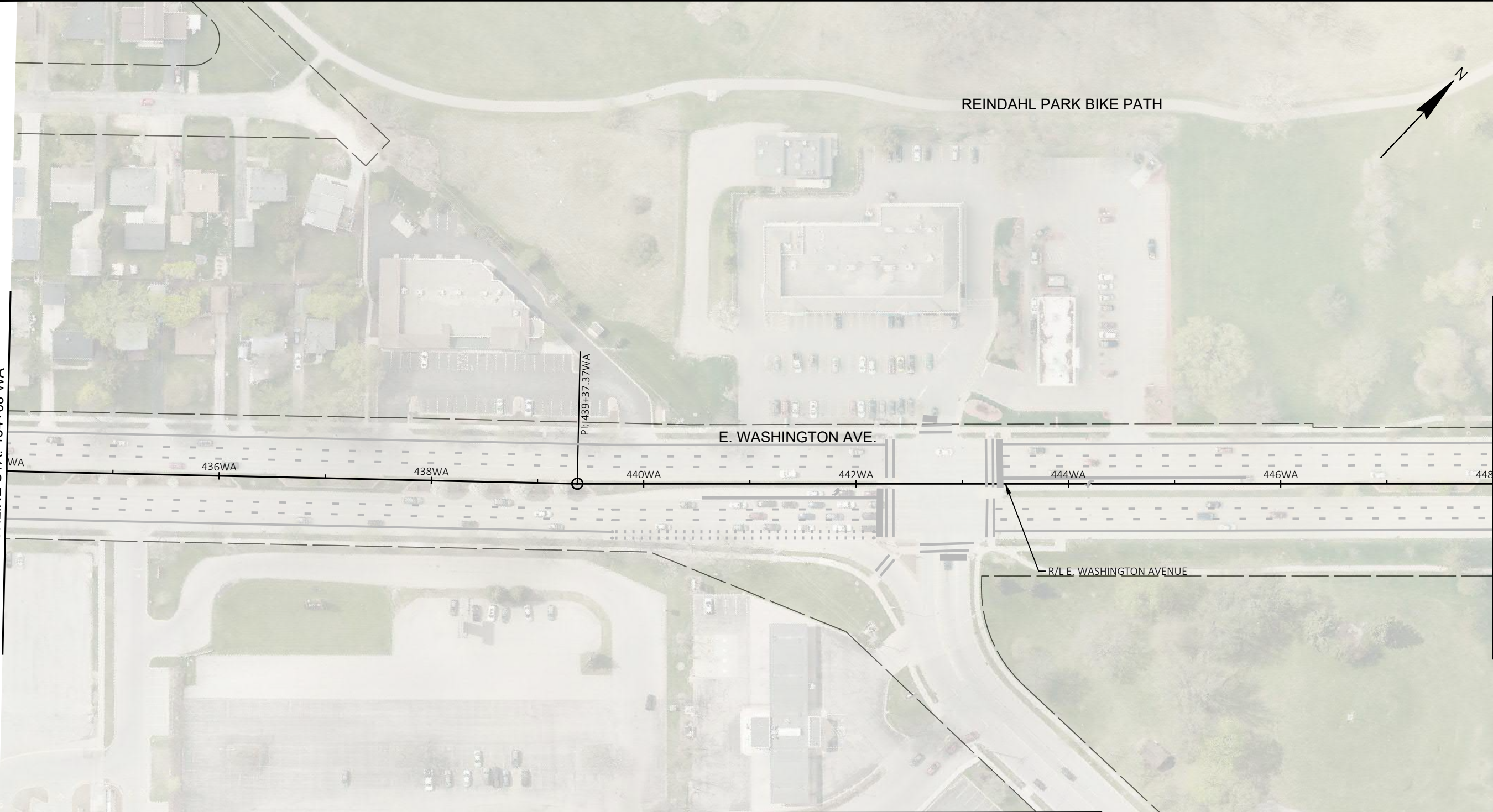
MARK	REVISION	DATE	BY

Designed By: AECOM/Date: 2021-12-21  
 60631225P Scale: 1"=100 FT

60631225P  
 CITY OF MADISON, DANE COUNTY, WI  
 CONTRACT NO: 60631225C  
 PAVEMENT MARKING & PERMANENT SIGNING  
 BUS RAPID TRANSIT  
 CITY OF MADISON



60631225P  
**M20-E**





MATCHLINE STA. 434+00 WA

MATCHLINE STA. 448+00 WA

- MARKING LEGEND**
- ① PAVEMENT MARKING EPOXY, LINE, 4-INCH (SOLID WHITE)
  - ② PAVEMENT MARKING EPOXY, LINE, 4-INCH (10' LINE 30' GAP)(WHITE)
  - ③ PAVEMENT MARKING EPOXY, LINE, 4-INCH (SOLID YELLOW)
  - ④ PAVEMENT MARKING EPOXY, LINE, 4-INCH (10' LINE 30' GAP)(YELLOW)
  - ⑤ PAVEMENT MARKING EPOXY, DOUBLE LINE, 4-INCH (SOLID YELLOW)
  - ⑥ PAVEMENT MARKING EPOXY, LINE, 8-INCH (SOLID WHITE)
  - ⑦ PAVEMENT MARKING EPOXY, LINE, 8-INCH (2' LINE 6' GAP)( WHITE)
  - ⑧ PAVEMENT MARKING EPOXY, LINE, 8-INCH (5' LINE 5' GAP)( WHITE)
  - ⑨ PAVEMENT MARKING EPOXY, LINE, 12-INCH (SOLID WHITE)
  - ⑩ PAVEMENT MARKING EPOXY, RADIUS LINE, 4-INCH (5' LINE, 5' GAP)(SOLID WHITE)
  - ⑪ PAVEMENT MARKING EPOXY, CROSSWALK, 6-INCH (SOLID WHITE)
  - ⑫ PAVEMENT MARKING EPOXY, STOP LINE, 24-INCH
  - ⑬ PAVEMENT MARKING EPOXY, CURB

- ⑭ PAVEMENT MARKING EPOXY, MEDIAN NOSE
- ⑮ PAVEMENT MARKING EPOXY, PARKING STALL
- ⑯ PAVEMENT MARKING EPOXY, SYMBOL, BIKE SHARROW
- ⑰ PAVEMENT MARKING EPOXY, SYMBOL, BIKE LANE
- ⑱ PAVEMENT MARKING EPOXY, SYMBOL, BIKE STRAIGHT ARROW
- ⑲ PAVEMENT MARKING EPOXY, SYMBOL, BIKE LANE & STRAIGHT ARROW
- ⑳ PAVEMENT MARKING EPOXY, SYMBOL, LEFT ARROW
- ㉑ PAVEMENT MARKING EPOXY, SYMBOL, RIGHT ARROW
- ㉒ PAVEMENT MARKING EPOXY, SYMBOL, STRAIGHT ARROW
- ㉓ PAVEMENT MARKING EPOXY, SYMBOL, STRAIGHT & LEFT ARROW
- ㉔ PAVEMENT MARKING EPOXY, SYMBOL, STRAIGHT & RIGHT ARROW
- ㉕ PAVEMENT MARKING EPOXY, WORD, ONLY
- ㉖ PAVEMENT MARKING EPOXY, SYMBOL, DIAMOND

 DEDICATED BUS LANE. BUS ONLY MARKINGS AND BUS ONLY SIGNAGE REQUIRED.

 LIMITS OF DISTURBANCE

NOTE:

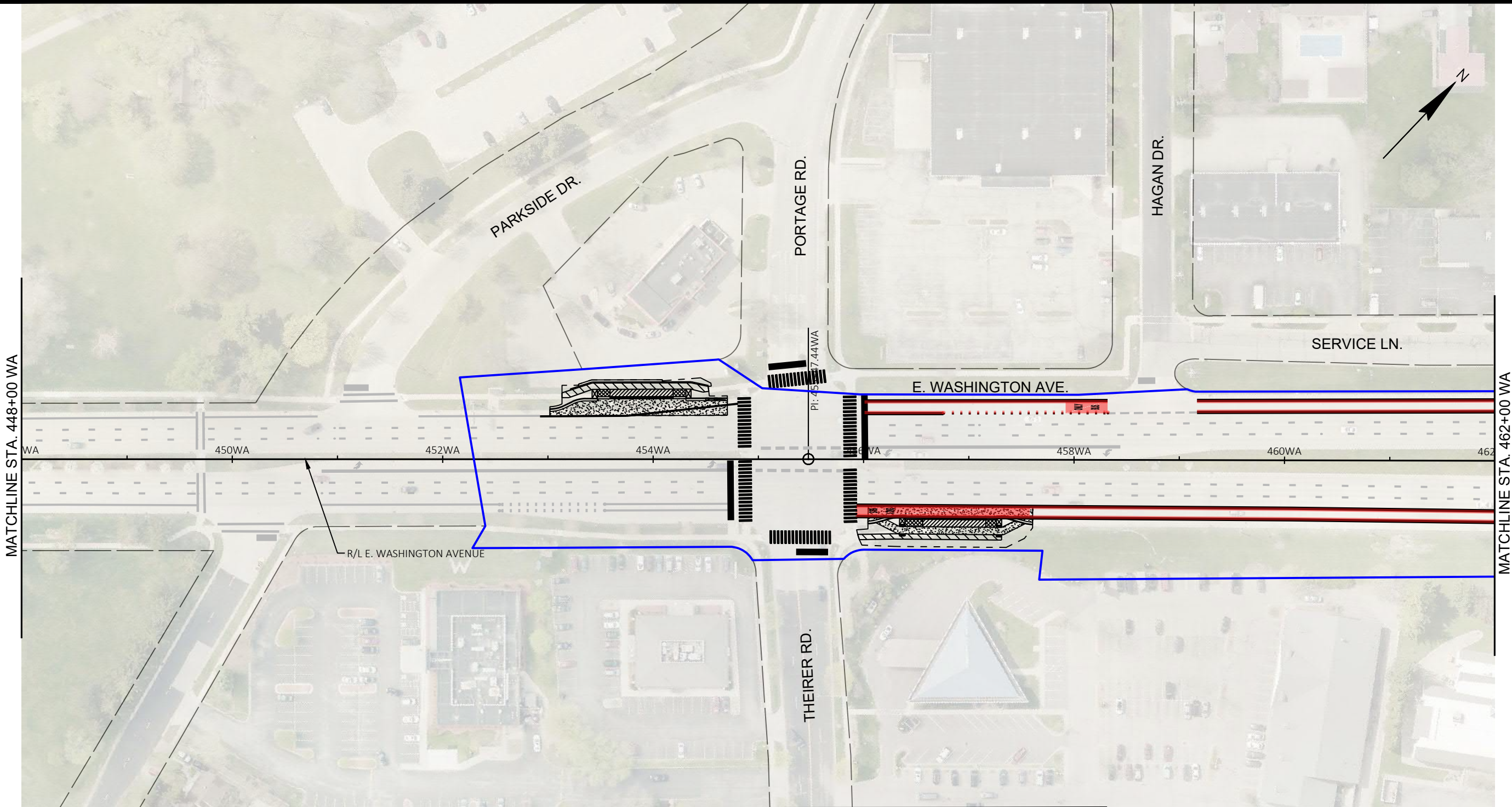
- SEE CITY OF MADISON SDD 'PAVEMENT MARKING DETAILS , PAGE 1-4' FOR MAINLINE, CROSSWALK, CURB, BIKE LANE, AND RESTRICTED TRAFFIC LANE MARKINGS.
- SEE CONSTRUCTION DETAILS FOR PLATFORM CURB FACE MARKINGS.
- THE WORD "BUS" SHALL BE PLACED 20' BEYOND THE START OF THE LONGITUDINAL MARKINGS, AND PLACE THE WORD "ONLY" AT A 32' SPACING BEYOND THE "BUS" MARKING. SEE PLAN SHEETS FOR SPECIFIC LOCATIONS.
- SEE WISDOT SDD 'PAVEMENT MARKING (TURN LANES)' FOR WORD AND ARROW PLACEMENT AT INTERSECTIONS.

MARK	REVISION	DATE	BY
60631225P	Designed By: AECOM	2021-12-21	Scale: 1"= 100 FT

60631225P  
 CITY OF MADISON  
 BUS RAPID TRANSIT  
 CITY OF MADISON  
 PAVEMENT MARKING & PERMANENT SIGNING  
 CONTRACT NO: 60631225C





60631225P  
 M21-E



- MARKING LEGEND**
- ① PAVEMENT MARKING EPOXY, LINE, 4-INCH (SOLID WHITE)
  - ② PAVEMENT MARKING EPOXY, LINE, 4-INCH (10' LINE 30' GAP)(WHITE)
  - ③ PAVEMENT MARKING EPOXY, LINE, 4-INCH (SOLID YELLOW)
  - ④ PAVEMENT MARKING EPOXY, LINE, 4-INCH (10' LINE 30' GAP)(YELLOW)
  - ⑤ PAVEMENT MARKING EPOXY, DOUBLE LINE, 4-INCH (SOLID YELLOW)
  - ⑥ PAVEMENT MARKING EPOXY, LINE, 8-INCH (SOLID WHITE)
  - ⑦ PAVEMENT MARKING EPOXY, LINE, 8-INCH (2' LINE 6' GAP)( WHITE)
  - ⑧ PAVEMENT MARKING EPOXY, LINE, 8-INCH (5' LINE 5' GAP)( WHITE)
  - ⑨ PAVEMENT MARKING EPOXY, LINE, 12-INCH (SOLID WHITE)
  - ⑩ PAVEMENT MARKING EPOXY, RADIUS LINE, 4-INCH (5' LINE, 5' GAP)(SOLID WHITE)
  - ⑪ PAVEMENT MARKING EPOXY, CROSSWALK, 6-INCH (SOLID WHITE)
  - ⑫ PAVEMENT MARKING EPOXY, STOP LINE, 24-INCH
  - ⑬ PAVEMENT MARKING EPOXY, CURB


- ⑭ PAVEMENT MARKING EPOXY, MEDIAN NOSE
- ⑮ PAVEMENT MARKING EPOXY, PARKING STALL
- ⑯ PAVEMENT MARKING EPOXY, SYMBOL, BIKE SHARROW
- ⑰ PAVEMENT MARKING EPOXY, SYMBOL, BIKE LANE
- ⑱ PAVEMENT MARKING EPOXY, SYMBOL, BIKE STRAIGHT ARROW
- ⑲ PAVEMENT MARKING EPOXY, SYMBOL, BIKE LANE & STRAIGHT ARROW
- ⑳ PAVEMENT MARKING EPOXY, SYMBOL, LEFT ARROW
- ㉑ PAVEMENT MARKING EPOXY, SYMBOL, RIGHT ARROW
- ㉒ PAVEMENT MARKING EPOXY, SYMBOL, STRAIGHT ARROW
- ㉓ PAVEMENT MARKING EPOXY, SYMBOL, STRAIGHT & LEFT ARROW
- ㉔ PAVEMENT MARKING EPOXY, SYMBOL, STRAIGHT & RIGHT ARROW
- ㉕ PAVEMENT MARKING EPOXY, WORD, ONLY
- ㉖ PAVEMENT MARKING EPOXY, SYMBOL, DIAMOND

 DEDICATED BUS LANE. BUS ONLY MARKINGS AND BUS ONLY SIGNAGE REQUIRED.

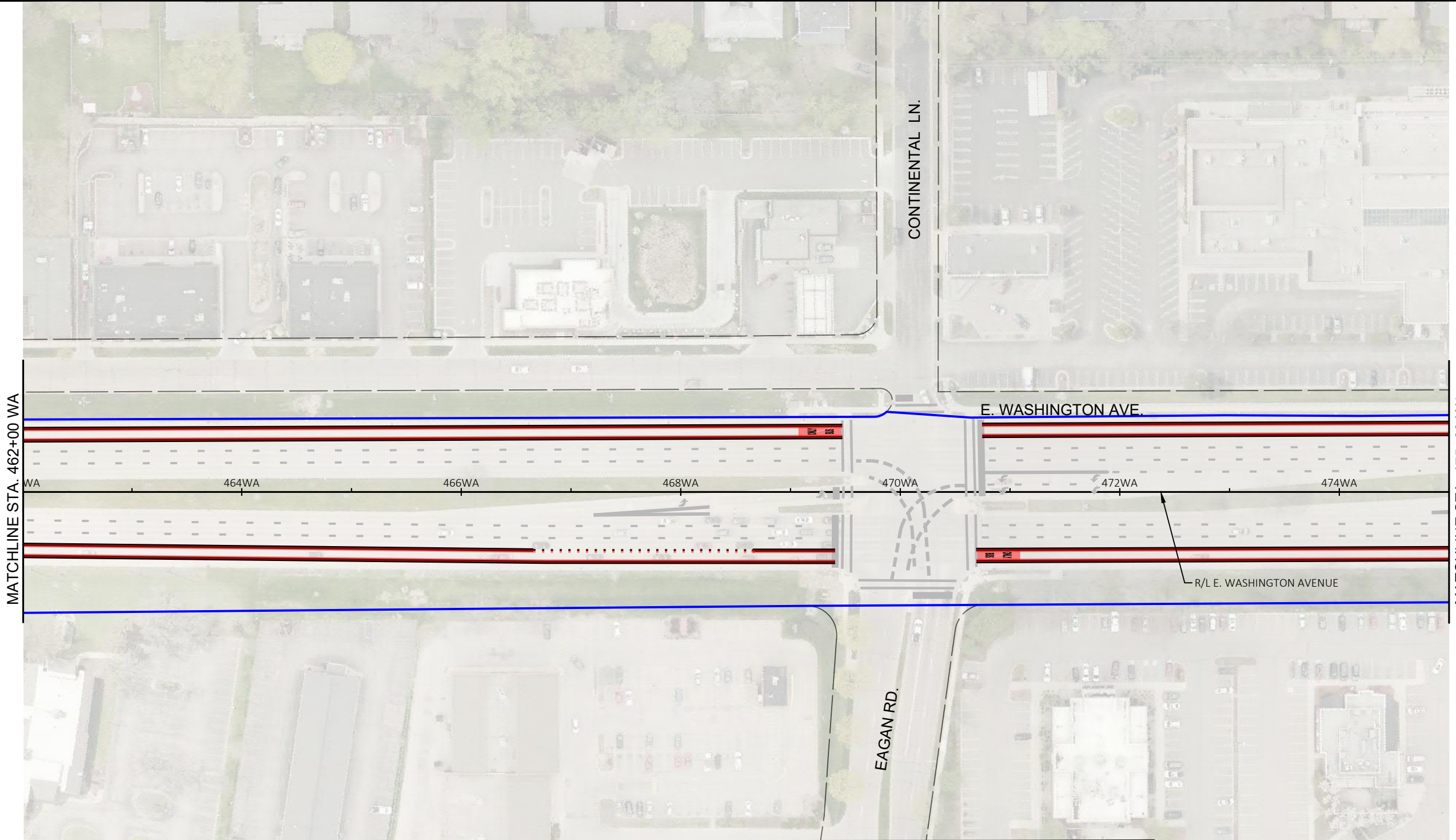
 LIMITS OF DISTURBANCE

NOTE:

- SEE CITY OF MADISON SDD 'PAVEMENT MARKING DETAILS , PAGE 1-4' FOR MAINLINE, CROSSWALK, CURB, BIKE LANE, AND RESTRICTED TRAFFIC LANE MARKINGS.
- SEE CONSTRUCTION DETAILS FOR PLATFORM CURB FACE MARKINGS.
- THE WORD "BUS" SHALL BE PLACED 20' BEYOND THE START OF THE LONGITUDINAL MARKINGS, AND PLACE THE WORD "ONLY" AT A 32' SPACING BEYOND THE "BUS" MARKING. SEE PLAN SHEETS FOR SPECIFIC LOCATIONS.
- SEE WISDOT SDD 'PAVEMENT MARKING (TURN LANES)' FOR WORD AND ARROW PLACEMENT AT INTERSECTIONS.

<b>PAVEMENT MARKING &amp; PERMANENT SIGNING</b> <b>BUS RAPID TRANSIT</b> <b>CITY OF MADISON</b>	60631225P CITY OF MADISON, DANE COUNTY, WI CONTRACT NO: 60631225C
	60631225P <b>M22-E</b>

MARK: 60631225P  
 REVISION: 2021-12-21  
 DATE: 2021-12-21  
 BY: 60631225P  
 Scale: 1"= 100 FT



- MARKING LEGEND**
- ① PAVEMENT MARKING EPOXY, LINE, 4-INCH (SOLID WHITE)
  - ② PAVEMENT MARKING EPOXY, LINE, 4-INCH (10' LINE 30' GAP)(WHITE)
  - ③ PAVEMENT MARKING EPOXY, LINE, 4-INCH (SOLID YELLOW)
  - ④ PAVEMENT MARKING EPOXY, LINE, 4-INCH (10' LINE 30' GAP)(YELLOW)
  - ⑤ PAVEMENT MARKING EPOXY, DOUBLE LINE, 4-INCH (SOLID YELLOW)
  - ⑥ PAVEMENT MARKING EPOXY, LINE, 8-INCH (SOLID WHITE)
  - ⑦ PAVEMENT MARKING EPOXY, LINE, 8-INCH (2' LINE 6' GAP)( WHITE)
  - ⑧ PAVEMENT MARKING EPOXY, LINE, 8-INCH (5' LINE 5' GAP)( WHITE)
  - ⑨ PAVEMENT MARKING EPOXY, LINE, 12-INCH (SOLID WHITE)
  - ⑩ PAVEMENT MARKING EPOXY, RADIUS LINE, 4-INCH (5' LINE, 5' GAP)(SOLID WHITE)
  - ⑪ PAVEMENT MARKING EPOXY, CROSSWALK, 6-INCH (SOLID WHITE)
  - ⑫ PAVEMENT MARKING EPOXY, STOP LINE, 24-INCH
  - ⑬ PAVEMENT MARKING EPOXY, CURB

- ⑭ PAVEMENT MARKING EPOXY, MEDIAN NOSE
- ⑮ PAVEMENT MARKING EPOXY, PARKING STALL
- ⑯ PAVEMENT MARKING EPOXY, SYMBOL, BIKE SHARROW
- ⑰ PAVEMENT MARKING EPOXY, SYMBOL, BIKE LANE
- ⑱ PAVEMENT MARKING EPOXY, SYMBOL, BIKE STRAIGHT ARROW
- ⑲ PAVEMENT MARKING EPOXY, SYMBOL, BIKE LANE & STRAIGHT ARROW
- ⑳ PAVEMENT MARKING EPOXY, SYMBOL, LEFT ARROW
- ㉑ PAVEMENT MARKING EPOXY, SYMBOL, RIGHT ARROW
- ㉒ PAVEMENT MARKING EPOXY, SYMBOL, STRAIGHT ARROW
- ㉓ PAVEMENT MARKING EPOXY, SYMBOL, STRAIGHT & LEFT ARROW
- ㉔ PAVEMENT MARKING EPOXY, SYMBOL, STRAIGHT & RIGHT ARROW
- ㉕ PAVEMENT MARKING EPOXY, WORD, ONLY
- ㉖ PAVEMENT MARKING EPOXY, SYMBOL, DIAMOND

**DEDICATED BUS LANE. BUS ONLY MARKINGS AND BUS ONLY SIGNAGE REQUIRED.**

**LIMITS OF DISTURBANCE**

**NOTE:**

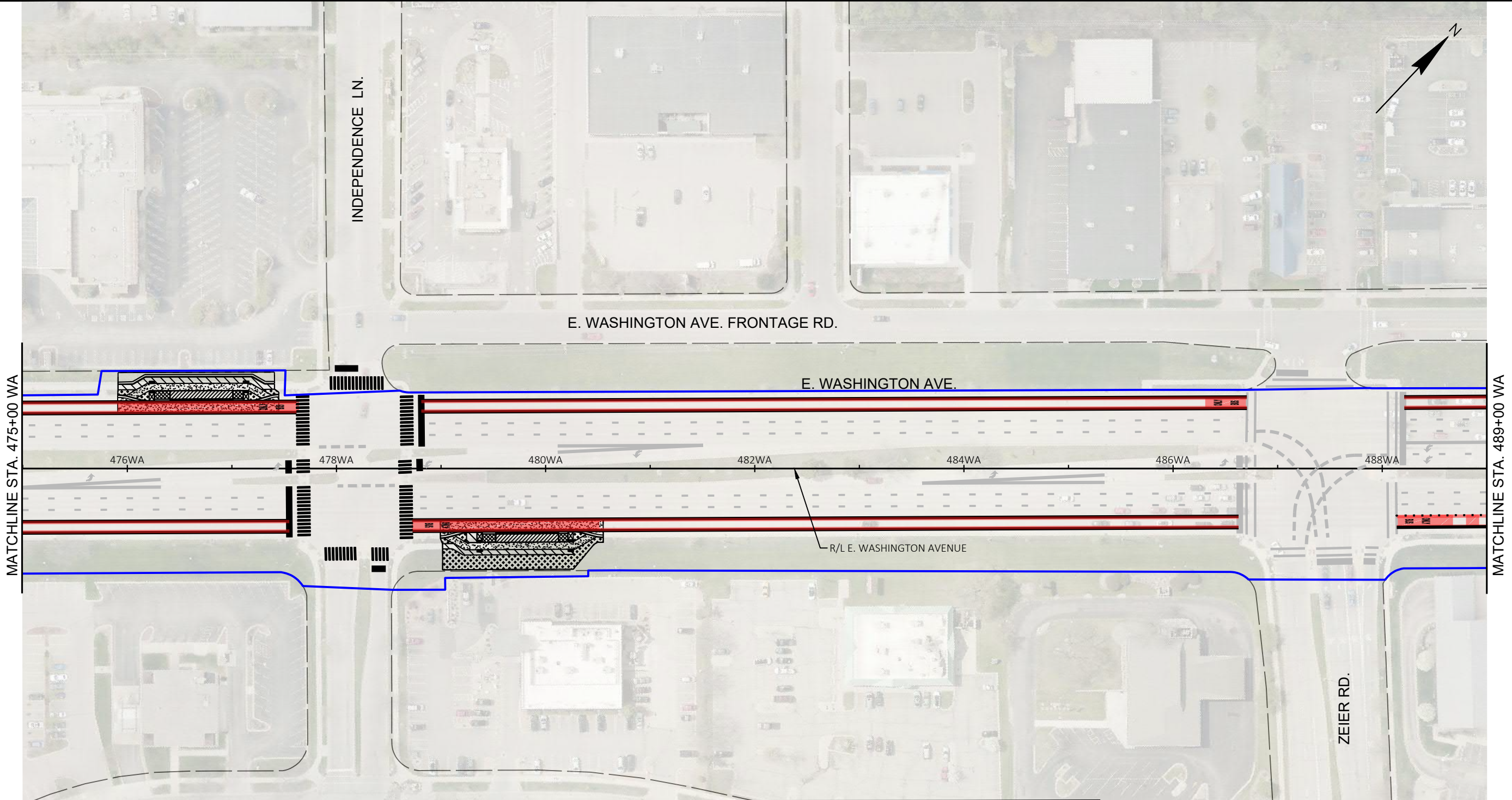
- SEE CITY OF MADISON SDD 'PAVEMENT MARKING DETAILS , PAGE 1-4' FOR MAINLINE, CROSSWALK, CURB, BIKE LANE, AND RESTRICTED TRAFFIC LANE MARKINGS.
- SEE CONSTRUCTION DETAILS FOR PLATFORM CURB FACE MARKINGS.
- THE WORD "BUS" SHALL BE PLACED 20' BEYOND THE START OF THE LONGITUDINAL MARKINGS, AND PLACE THE WORD "ONLY" AT A 32' SPACING BEYOND THE "BUS" MARKING. SEE PLAN SHEETS FOR SPECIFIC LOCATIONS.
- SEE WISDOT SDD 'PAVEMENT MARKING (TURN LANES)' FOR WORD AND ARROW PLACEMENT AT INTERSECTIONS.

MARK	REVISION	DATE	BY
60631225P	Designed By: AECOM	2021-12-21	60631225P
Scale: 1"= 100 FT			

60631225P  
 CITY OF MADISON, DANE COUNTY, WI  
 CONTRACT NO: 60631225C

PAVEMENT MARKING & PERMANENT SIGNING  
 BUS RAPID TRANSIT  
 CITY OF MADISON

60631225P  
 M23-E



- MARKING LEGEND**
- ① PAVEMENT MARKING EPOXY, LINE, 4-INCH (SOLID WHITE)
  - ② PAVEMENT MARKING EPOXY, LINE, 4-INCH (10' LINE 30' GAP)(WHITE)
  - ③ PAVEMENT MARKING EPOXY, LINE, 4-INCH (SOLID YELLOW)
  - ④ PAVEMENT MARKING EPOXY, LINE, 4-INCH (10' LINE 30' GAP)(YELLOW)
  - ⑤ PAVEMENT MARKING EPOXY, DOUBLE LINE, 4-INCH (SOLID YELLOW)
  - ⑥ PAVEMENT MARKING EPOXY, LINE, 8-INCH (SOLID WHITE)
  - ⑦ PAVEMENT MARKING EPOXY, LINE, 8-INCH (2' LINE 6' GAP)( WHITE)
  - ⑧ PAVEMENT MARKING EPOXY, LINE, 8-INCH (5' LINE 5' GAP)( WHITE)
  - ⑨ PAVEMENT MARKING EPOXY, LINE, 12-INCH (SOLID WHITE)
  - ⑩ PAVEMENT MARKING EPOXY, RADIUS LINE, 4-INCH (5' LINE, 5' GAP)(SOLID WHITE)
  - ⑪ PAVEMENT MARKING EPOXY, CROSSWALK, 6-INCH (SOLID WHITE)
  - ⑫ PAVEMENT MARKING EPOXY, STOP LINE, 24-INCH
  - ⑬ PAVEMENT MARKING EPOXY, CURB

- ⑭ PAVEMENT MARKING EPOXY, MEDIAN NOSE
- ⑮ PAVEMENT MARKING EPOXY, PARKING STALL
- ⑯ PAVEMENT MARKING EPOXY, SYMBOL, BIKE SHARROW
- ⑰ PAVEMENT MARKING EPOXY, SYMBOL, BIKE LANE
- ⑱ PAVEMENT MARKING EPOXY, SYMBOL, BIKE STRAIGHT ARROW
- ⑲ PAVEMENT MARKING EPOXY, SYMBOL, BIKE LANE & STRAIGHT ARROW
- ⑳ PAVEMENT MARKING EPOXY, SYMBOL, LEFT ARROW
- ㉑ PAVEMENT MARKING EPOXY, SYMBOL, RIGHT ARROW
- ㉒ PAVEMENT MARKING EPOXY, SYMBOL, STRAIGHT ARROW
- ㉓ PAVEMENT MARKING EPOXY, SYMBOL, STRAIGHT & LEFT ARROW
- ㉔ PAVEMENT MARKING EPOXY, SYMBOL, STRAIGHT & RIGHT ARROW
- ㉕ PAVEMENT MARKING EPOXY, WORD, ONLY
- ㉖ PAVEMENT MARKING EPOXY, SYMBOL, DIAMOND

**DEDICATED BUS LANE. BUS ONLY MARKINGS AND BUS ONLY SIGNAGE REQUIRED.**

**LIMITS OF DISTURBANCE**

**NOTE:**

- SEE CITY OF MADISON SDD 'PAVEMENT MARKING DETAILS , PAGE 1-4' FOR MAINLINE, CROSSWALK, CURB, BIKE LANE, AND RESTRICTED TRAFFIC LANE MARKINGS.
- SEE CONSTRUCTION DETAILS FOR PLATFORM CURB FACE MARKINGS.
- THE WORD "BUS" SHALL BE PLACED 20' BEYOND THE START OF THE LONGITUDINAL MARKINGS, AND PLACE THE WORD "ONLY" AT A 32' SPACING BEYOND THE "BUS" MARKING. SEE PLAN SHEETS FOR SPECIFIC LOCATIONS.
- SEE WISDOT SDD 'PAVEMENT MARKING (TURN LANES)' FOR WORD AND ARROW PLACEMENT AT INTERSECTIONS.

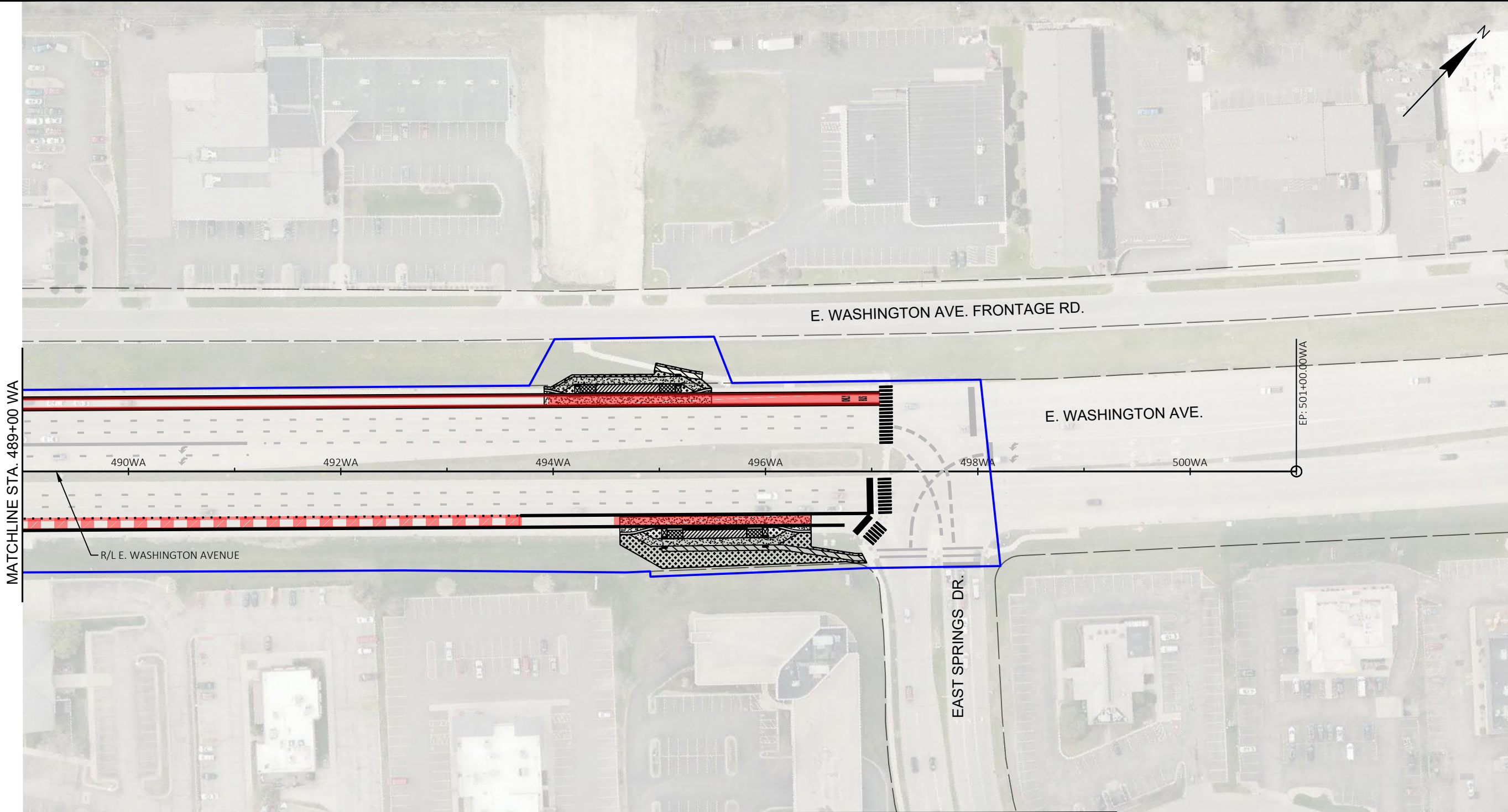
MARK	REVISION	DATE	BY
60631225P	Designed By: AECOM	2021-12-21	
60631225P	Date:		

Scale: 1"= 100 FT

60631225P  
 CITY OF MADISON, DANE COUNTY, WI  
 CONTRACT NO: 60631225C

PAVEMENT MARKING & PERMANENT SIGNING  
 BUS RAPID TRANSIT  
 CITY OF MADISON

60631225P  
**M24-E**



- MARKING LEGEND**
- ① PAVEMENT MARKING EPOXY, LINE, 4-INCH (SOLID WHITE)
  - ② PAVEMENT MARKING EPOXY, LINE, 4-INCH (10' LINE 30' GAP)(WHITE)
  - ③ PAVEMENT MARKING EPOXY, LINE, 4-INCH (SOLID YELLOW)
  - ④ PAVEMENT MARKING EPOXY, LINE, 4-INCH (10' LINE 30' GAP)(YELLOW)
  - ⑤ PAVEMENT MARKING EPOXY, DOUBLE LINE, 4-INCH (SOLID YELLOW)
  - ⑥ PAVEMENT MARKING EPOXY, LINE, 8-INCH (SOLID WHITE)
  - ⑦ PAVEMENT MARKING EPOXY, LINE, 8-INCH (2' LINE 6' GAP)( WHITE)
  - ⑧ PAVEMENT MARKING EPOXY, LINE, 8-INCH (5' LINE 5' GAP)( WHITE)
  - ⑨ PAVEMENT MARKING EPOXY, LINE, 12-INCH (SOLID WHITE)
  - ⑩ PAVEMENT MARKING EPOXY, RADIUS LINE, 4-INCH (5' LINE, 5' GAP)(SOLID WHITE)
  - ⑪ PAVEMENT MARKING EPOXY, CROSSWALK, 6-INCH (SOLID WHITE)
  - ⑫ PAVEMENT MARKING EPOXY, STOP LINE, 24-INCH
  - ⑬ PAVEMENT MARKING EPOXY, CURB

- ⑭ PAVEMENT MARKING EPOXY, MEDIAN NOSE
- ⑮ PAVEMENT MARKING EPOXY, PARKING STALL
- ⑯ PAVEMENT MARKING EPOXY, SYMBOL, BIKE SHARROW
- ⑰ PAVEMENT MARKING EPOXY, SYMBOL, BIKE LANE
- ⑱ PAVEMENT MARKING EPOXY, SYMBOL, BIKE STRAIGHT ARROW
- ⑲ PAVEMENT MARKING EPOXY, SYMBOL, BIKE LANE & STRAIGHT ARROW
- ⑳ PAVEMENT MARKING EPOXY, SYMBOL, LEFT ARROW
- ㉑ PAVEMENT MARKING EPOXY, SYMBOL, RIGHT ARROW
- ㉒ PAVEMENT MARKING EPOXY, SYMBOL, STRAIGHT ARROW
- ㉓ PAVEMENT MARKING EPOXY, SYMBOL, STRAIGHT & LEFT ARROW
- ㉔ PAVEMENT MARKING EPOXY, SYMBOL, STRAIGHT & RIGHT ARROW
- ㉕ PAVEMENT MARKING EPOXY, WORD, ONLY
- ㉖ PAVEMENT MARKING EPOXY, SYMBOL, DIAMOND

**DEDICATED BUS LANE. BUS ONLY MARKINGS AND BUS ONLY SIGNAGE REQUIRED.**

**LIMITS OF DISTURBANCE**

**NOTE:**

- SEE CITY OF MADISON SDD 'PAVEMENT MARKING DETAILS , PAGE 1-4' FOR MAINLINE, CROSSWALK, CURB, BIKE LANE, AND RESTRICTED TRAFFIC LANE MARKINGS.
- SEE CONSTRUCTION DETAILS FOR PLATFORM CURB FACE MARKINGS.
- THE WORD "BUS" SHALL BE PLACED 20' BEYOND THE START OF THE LONGITUDINAL MARKINGS, AND PLACE THE WORD "ONLY" AT A 32' SPACING BEYOND THE "BUS" MARKING. SEE PLAN SHEETS FOR SPECIFIC LOCATIONS.
- SEE WISDOT SDD 'PAVEMENT MARKING (TURN LANES)' FOR WORD AND ARROW PLACEMENT AT INTERSECTIONS.

MARK	REVISION	DATE	BY
60631225P	Designed By: AECOM	2021-12-21	

Scale: 1"= 100 FT

60631225P

PAVEMENT MARKING & PERMANENT SIGNING

BUS RAPID TRANSIT

CITY OF MADISON

CITY OF MADISON, DANE COUNTY, WI

CONTRACT NO: 60631225C

60631225P

M25-E