

NORTH STAR PARK EXPANSION AND CAMAR PARK MASTER PLANS

Public Meeting #2
McClellan Park Neighborhood
Association Annual Meeting
4-11-2018



INTRODUCTION

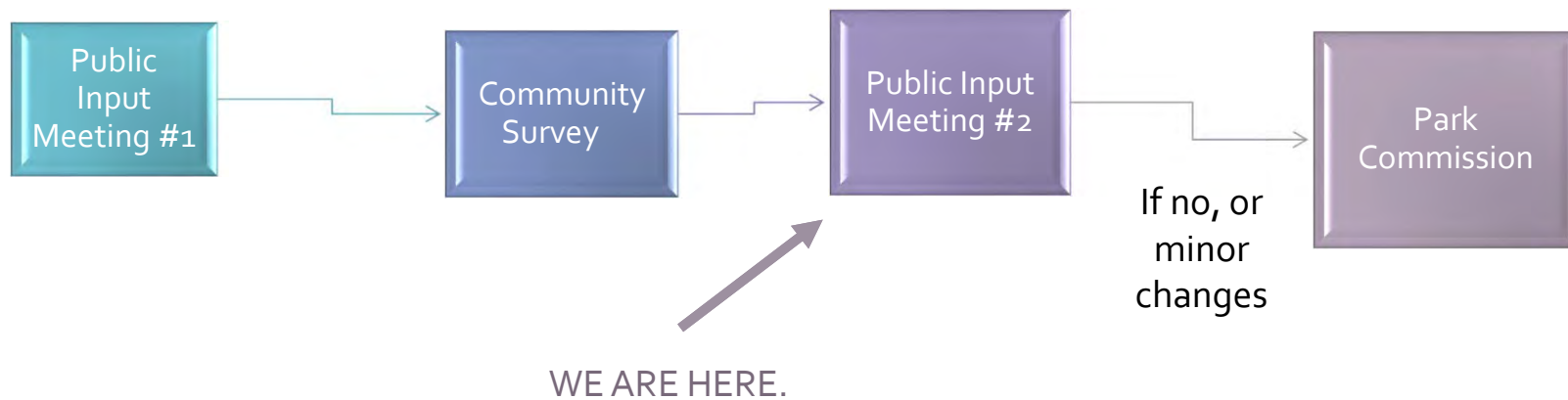
Kate Kane, City of Madison Parks Division

Sarah Lerner, City of Madison Parks Division

TONIGHT'S GOALS

- Recap last meeting
- Present draft plans

MASTER PLAN PROCESS





Camar

North Star

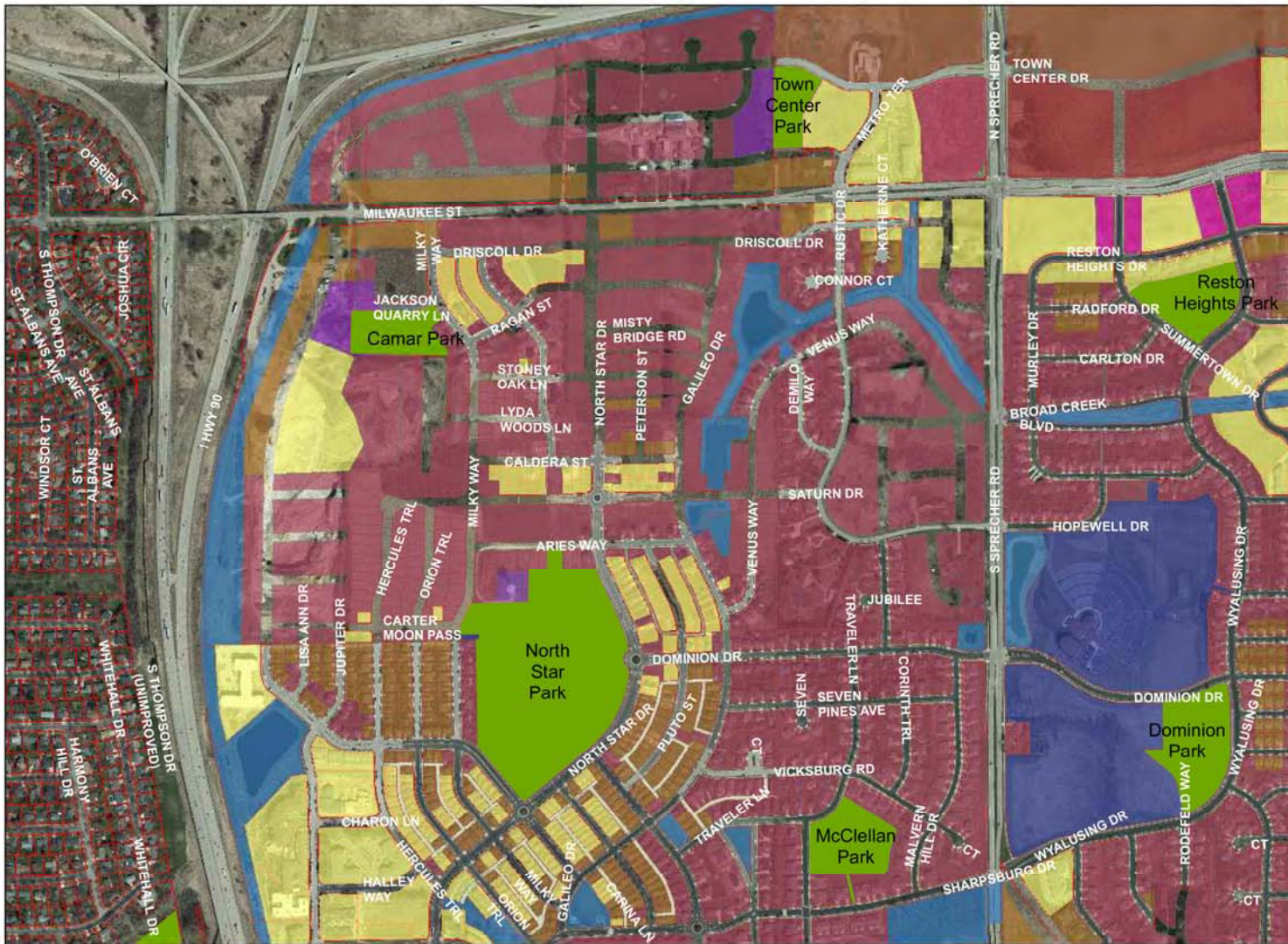
HISTORY

- **North Star Park – 23.6 acres**
 - 2002 - Grandview Commons Outlot 10 20.5 acres
 - 2014 – North Addition to Grandview Commons Outlot 43 - 4.7 acres
- **Camar Park**
 - 2014- North Addition to Grandview Commons Outlot 46 - 3.47 acres

EXISTING CONDITIONS

- **North Star Park and Camar Park**
 - Context
 - Neighborhood Development Plan
 - Adjacent Parks
 - Aerial
 - Photos
 - Topography
 - Slope
 - Vegetation

NEIGHBORHOOD



SPRECHER NEIGHBORHOOD DEVELOPMENT PLAN

- Legend**
- MMSD Schools
 - City of Madison Park
 - <all other values>
- LandUSE**
- Community Mixed Use
 - Employment
 - Housing Mix 1 (0-8 du/ac)
 - Housing Mix 2 (9-20 du/ac)
 - Housing Mix 3 (21-40 du/ac)
 - Industrial
 - Institutional
 - Neighborhood Retail and Service
 - Park
 - Regional Mixed Use
 - Stormwater and Other Open Space
 - Utilities



0 300 600 Feet

Date: 10/30/2017

Document Path: M:\Maps\Parks GIS\Parks\North Star\Context.mxd

N
E
I
G
H
B
O
R
H
O
O
D



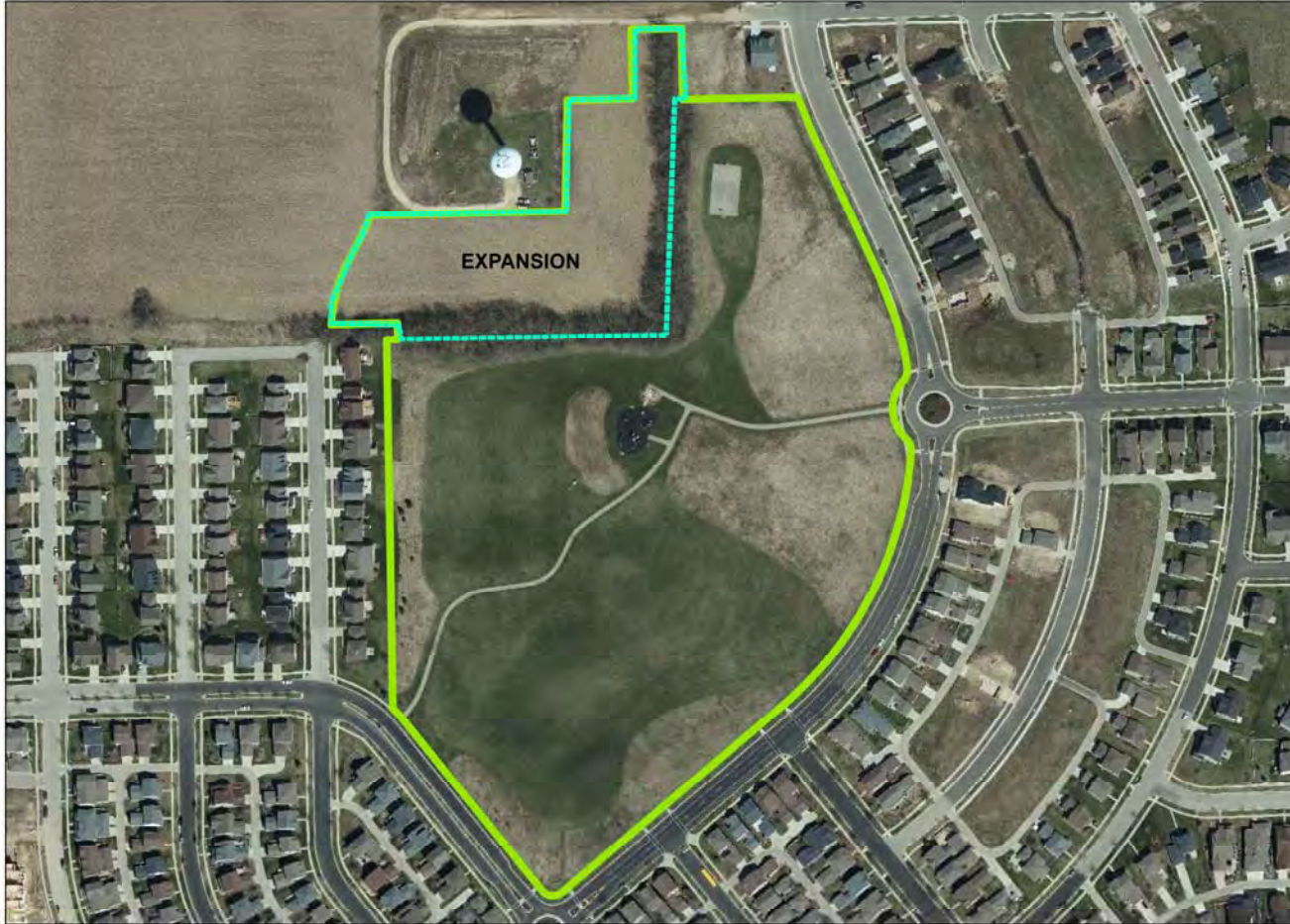
**Architectural Site Plan,
The Flats at Grandview**

A
D
J
A
C
E
N
T
P
A
R
K
S



Document Path: M:\Maps\Parks GIS\Parks\North Star\Adjacent Parks.mxd

A
E
R
I
A
L



Document Path: M:\Maps\Parks GIS\Parks\North Star\Aerial.mxd

North Star Park Expansion

Legend
City of Madison Park



0 100 200 Feet

Date: 10/30/2017

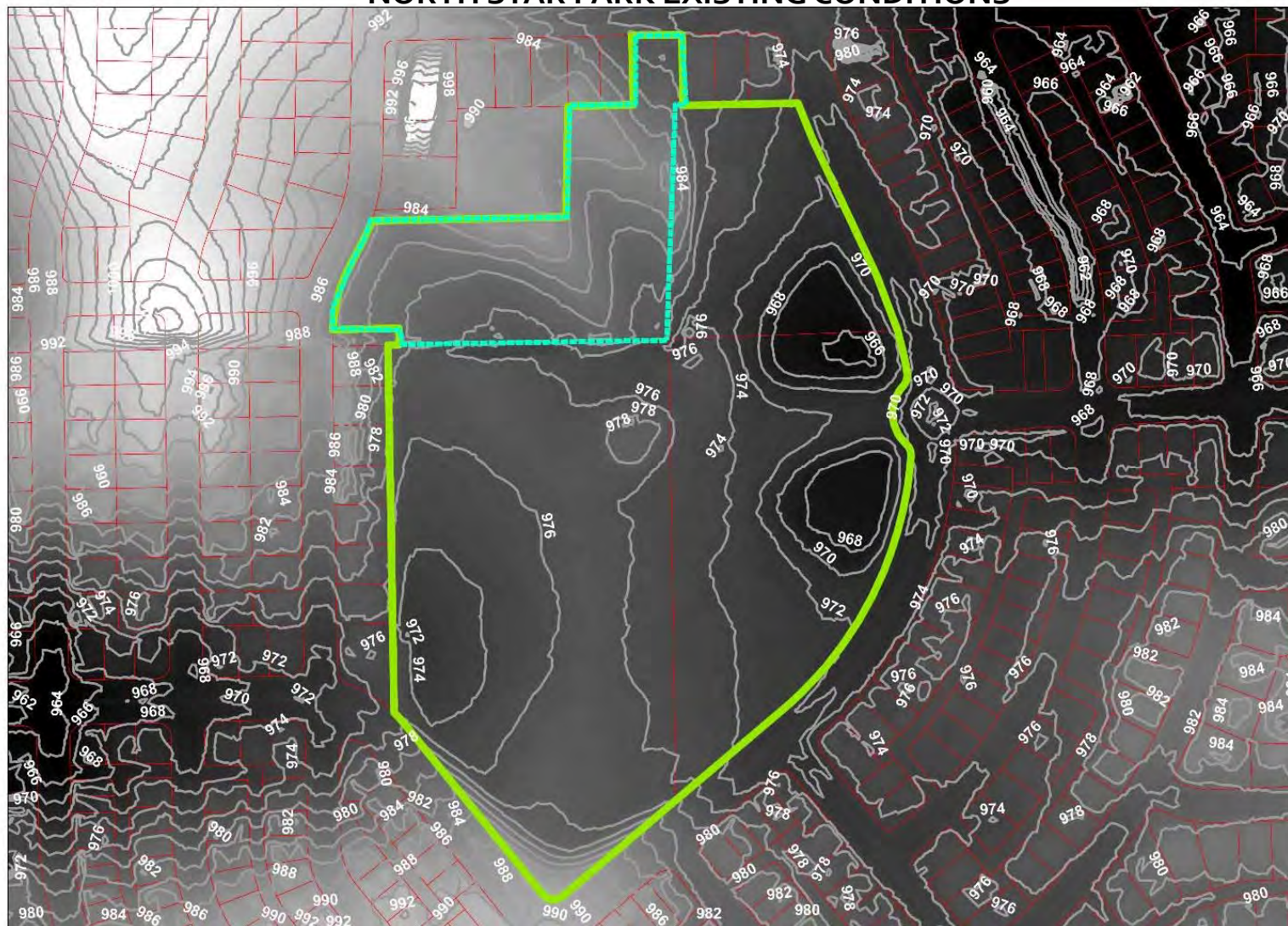
NORTH STAR PARK EXPANSION

P
H
O
T
O
S



NORTH STAR PARK EXPANSION |

NORTH STAR PARK EXISTING CONDITIONS



Document Path: M:\Maps\Parks GIS\Parks\North Star\Topography.mxd

NORTH STAR PARK EXISTING CONDITIONS



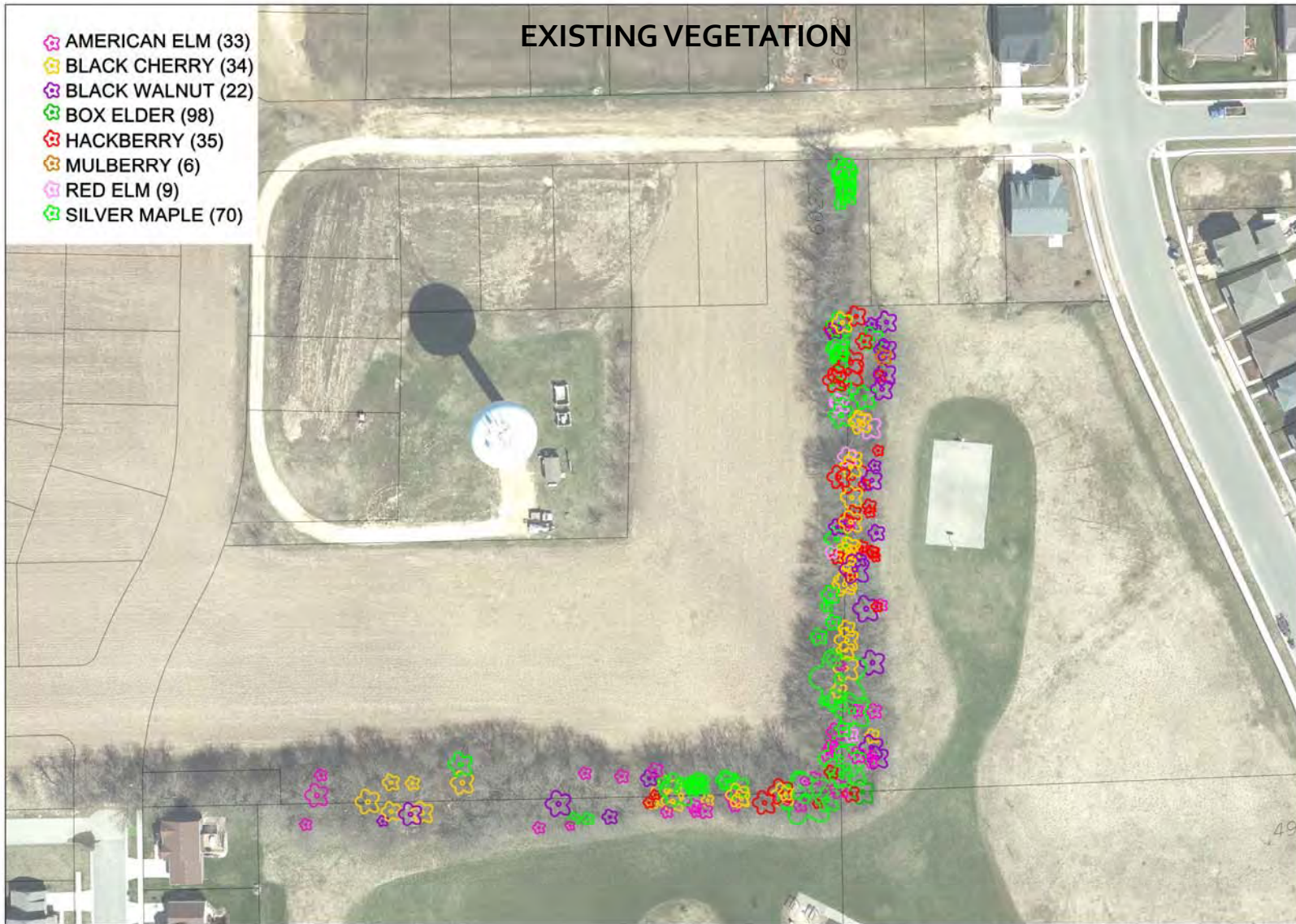
V
E
G
E
T
A
T
I
O
N



- Primarily forbs and grasses
- Wooded edge being evaluated by Tree Health Management

NORTH STAR PARK EXPANSION |

V
E
G
E
T
A
T
I
O
N



M:\Maps\parks\NorthStar\MasterPlan\NorthStar_Expansion_Trees.dgn

City of Madison
 Department of Public Works
PARKS DIVISION
 City-County Building, Suite 104
 210 Martin Luther King, Jr. Blvd.
 Madison, WI 53703

play
MADISON
PARKS

Graphical Scale 0 60 ft N

PROJECT:
**NORTH STAR
 PARK TREE
 SURVEY**

**NORTH STAR PARK
 502 N STAR DR
 MADISON, WI**

Although every effort has been made in preparing these plans and checking them for accuracy, the contractor and subcontractors must check all details and dimensions of their trade and be responsible for the same.

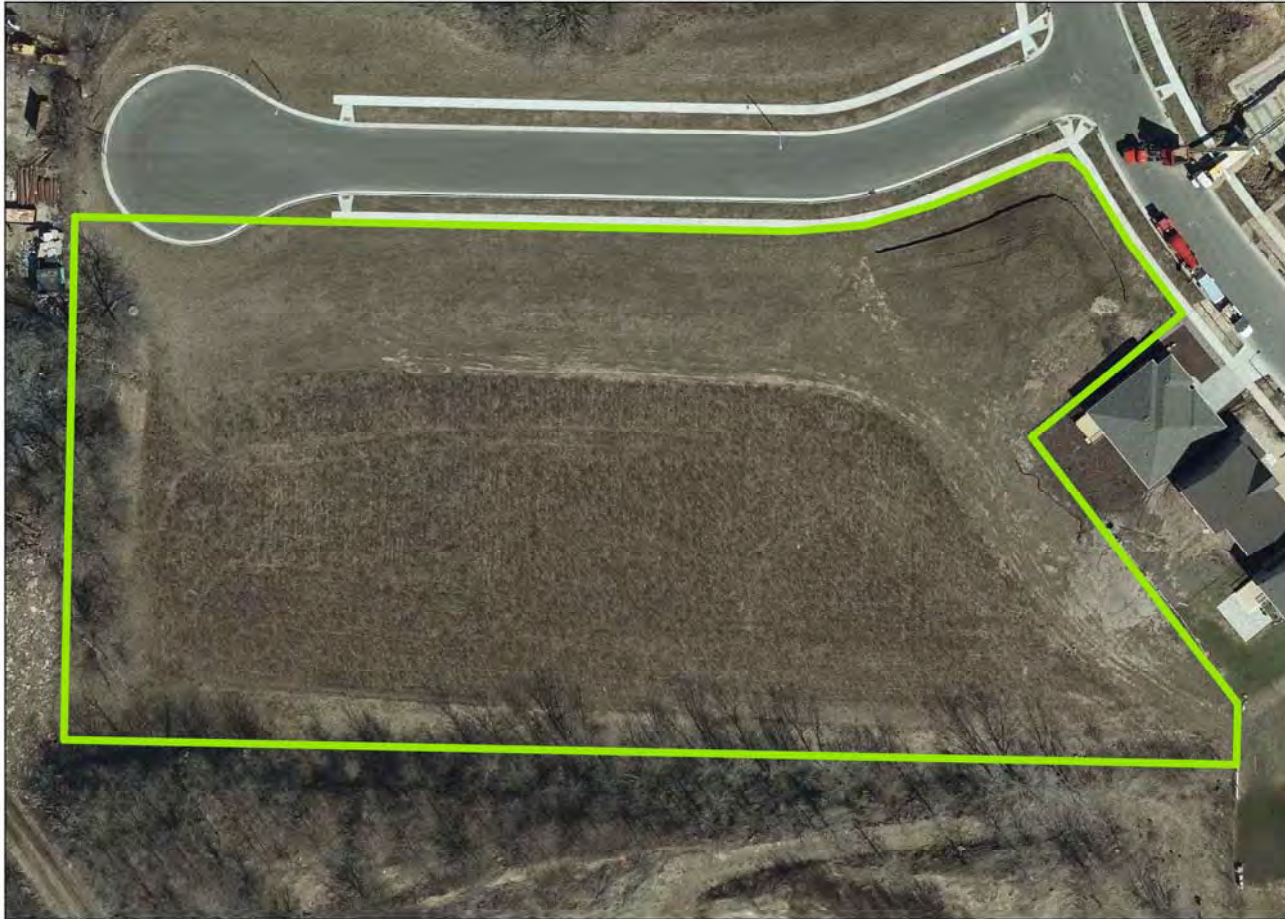
ITEM	DATE
Drawn By:	xx-xx-xxxx
Approved By:	xx-xx-xxxx

PUBLIC WORKS PROJECT #:
####

SHEET TITLE:
TREE SURVEY

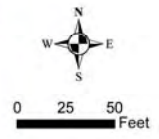
SHEET NUMBER:

A
E
R
I
A
L



North Star Park
Expansion

Legend
City of Madison Park



Date: 10/30/2017

Document Path: M:\Maps\Parks GIS\Parks\Camar\Aerial.mxd

CAMAR PARK

P
H
O
T
O
S



CAMAR PARK



P
H
O
T
O
S

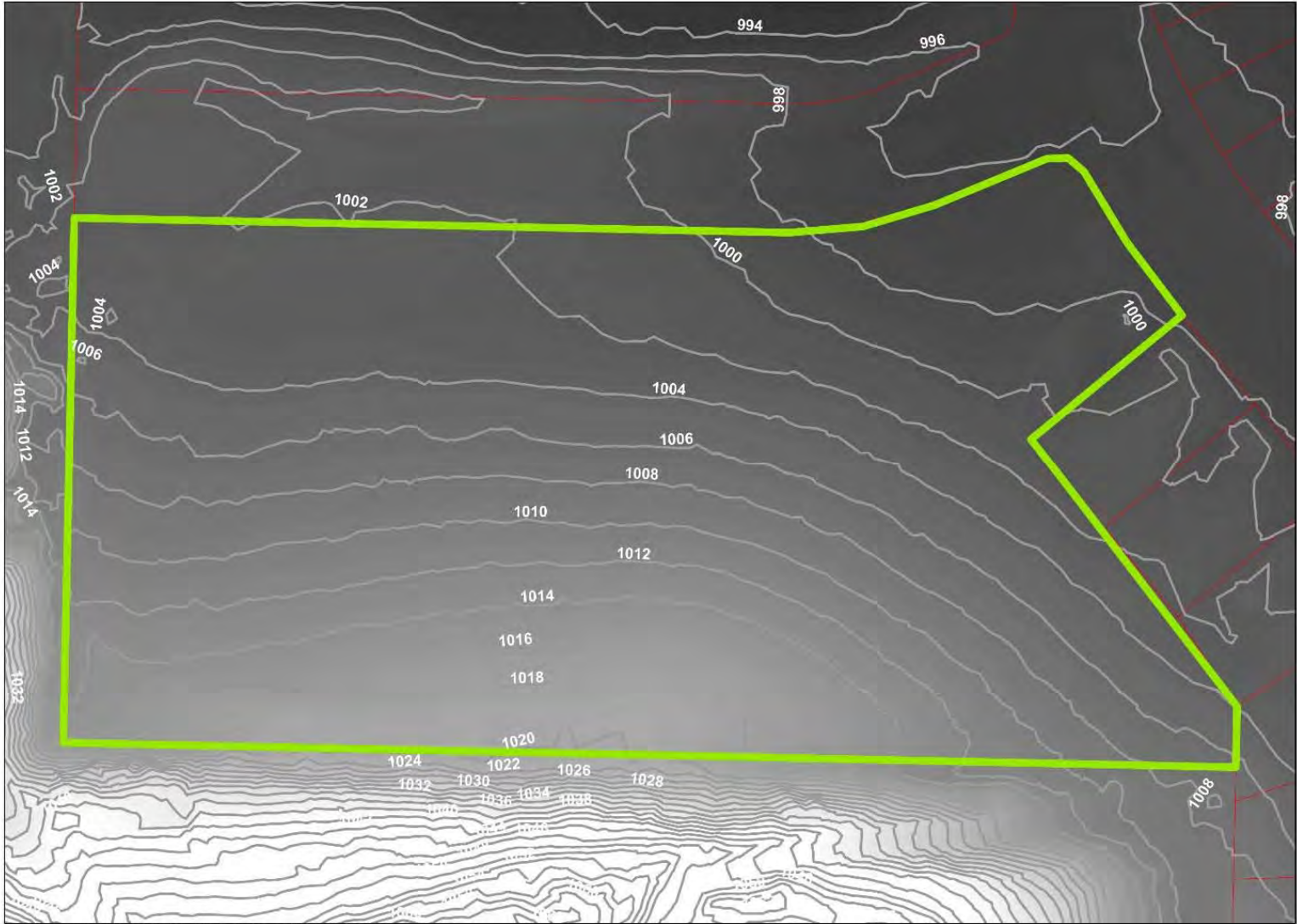


CAMAR PARK



CAMAR PARK EXISTING CONDITIONS

T
O
P
O
G
R
A
P
H
Y

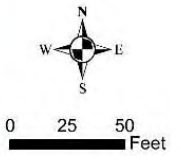


Camar Park

ELEVATION

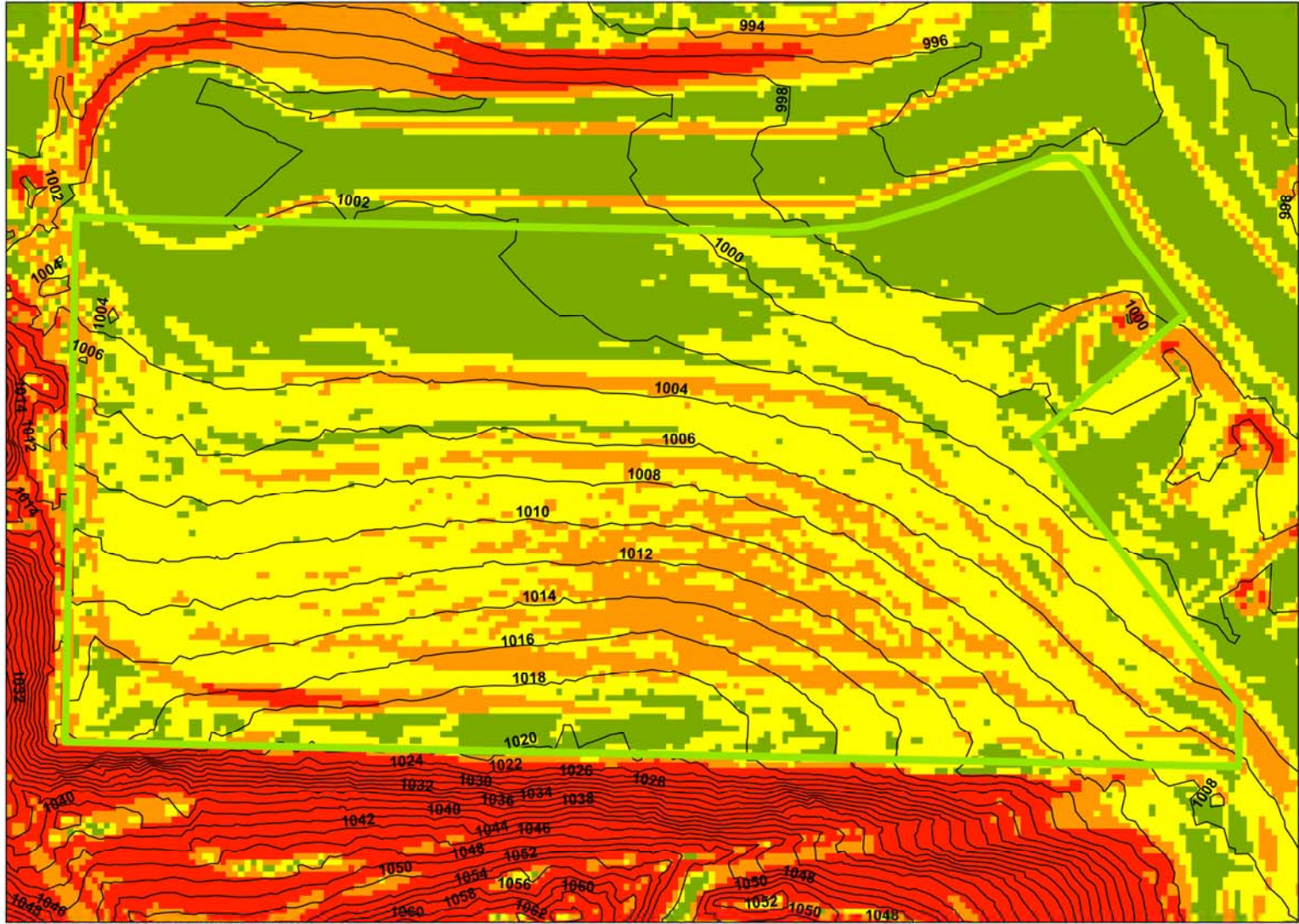
Legend

- City of Madison Park
- Value
High : 1040
Low : 980
- Contours



Date: 10/30/2017

CAMAR PARK EXISTING CONDITIONS



Camar Park

SLOPE

- Legend
- City of Madison Park
 - Contours
 - Slope_DEM_202 <VALUE>
 - 0
 - 1 - 5
 - 6 - 10
 - 11 - 20
 - 21 - 100



0 25 50 Feet

Date: 10/30/2017

Document Path: M:\Maps\Parks GIS\Parks\Camar\Slope.mxd

V
E
G
E
T
A
T
I
O
N



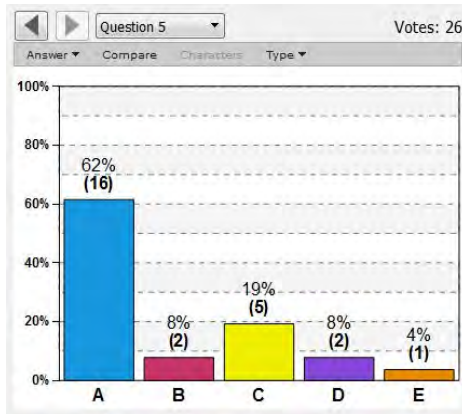
- Mix of forbs and grasses – a small line of trees (primarily Boxelder) at far western edge of park
- Majority of parcel is currently brush or flail mowed
- Opportunity to bring in more trees at this location

CAMAR PARK



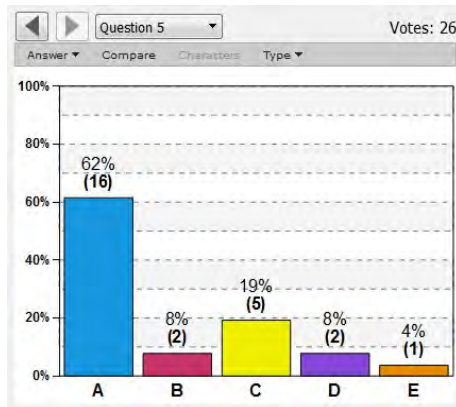
IClicker QUESTION RESPONSES

How long have you lived in the neighborhood?



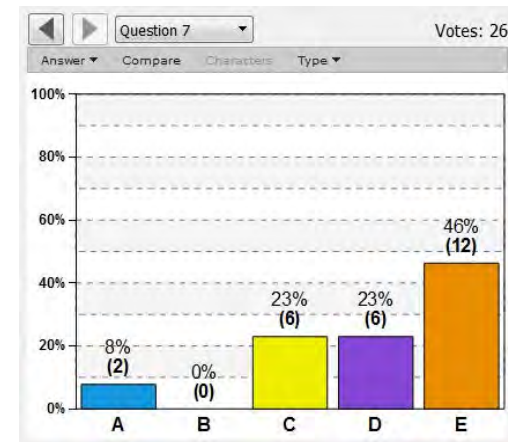
- A. A few months.
- B. Over a year.
- C. A few years.
- D. I don't live in the neighborhood.

Why do you typically visit parks?



- A. To walk or view nature.
- B. To play a game or participate in a field sport
- C. To take my child(ren) to a playground.
- D. To go to an event or festival.
- E. Other.

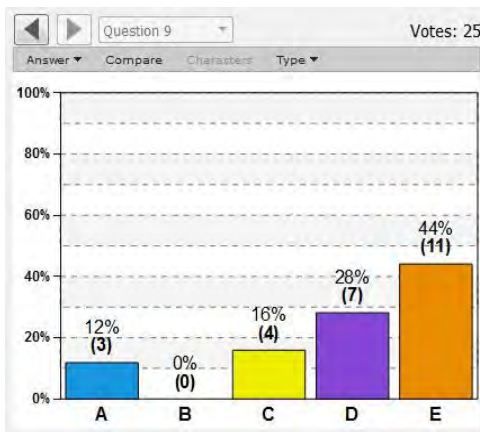
What do you feel is most lacking in your community open spaces?



- A. Places to walk or bike for exercise.
- B. Places for children to play.
- C. Places to picnic and have gatherings.
- D. Places to grow and eat local food.
- E. Other.

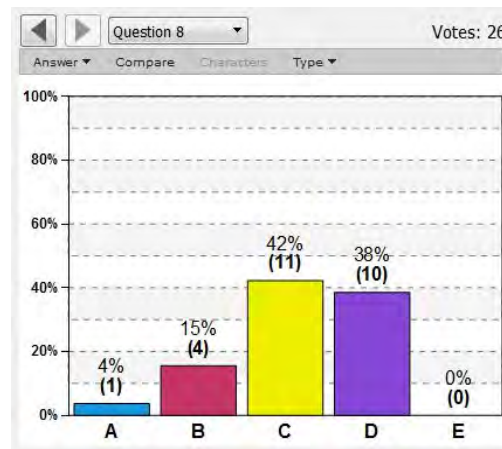
IClicker QUESTION RESPONSES

What would be your most desired amenity at Camar Park?



- A. Places for sports and games.
- B. A place for sledding.
- C. Hiking trails and place for nature.
- D. Place for me to take my dog off leash.
- E. Other.

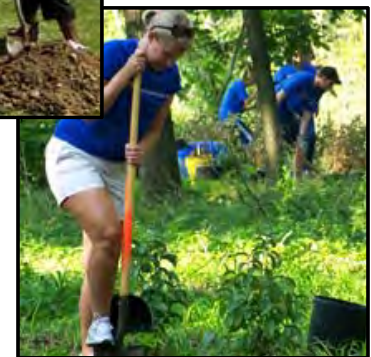
What would be your most desired amenity at North Star Park?



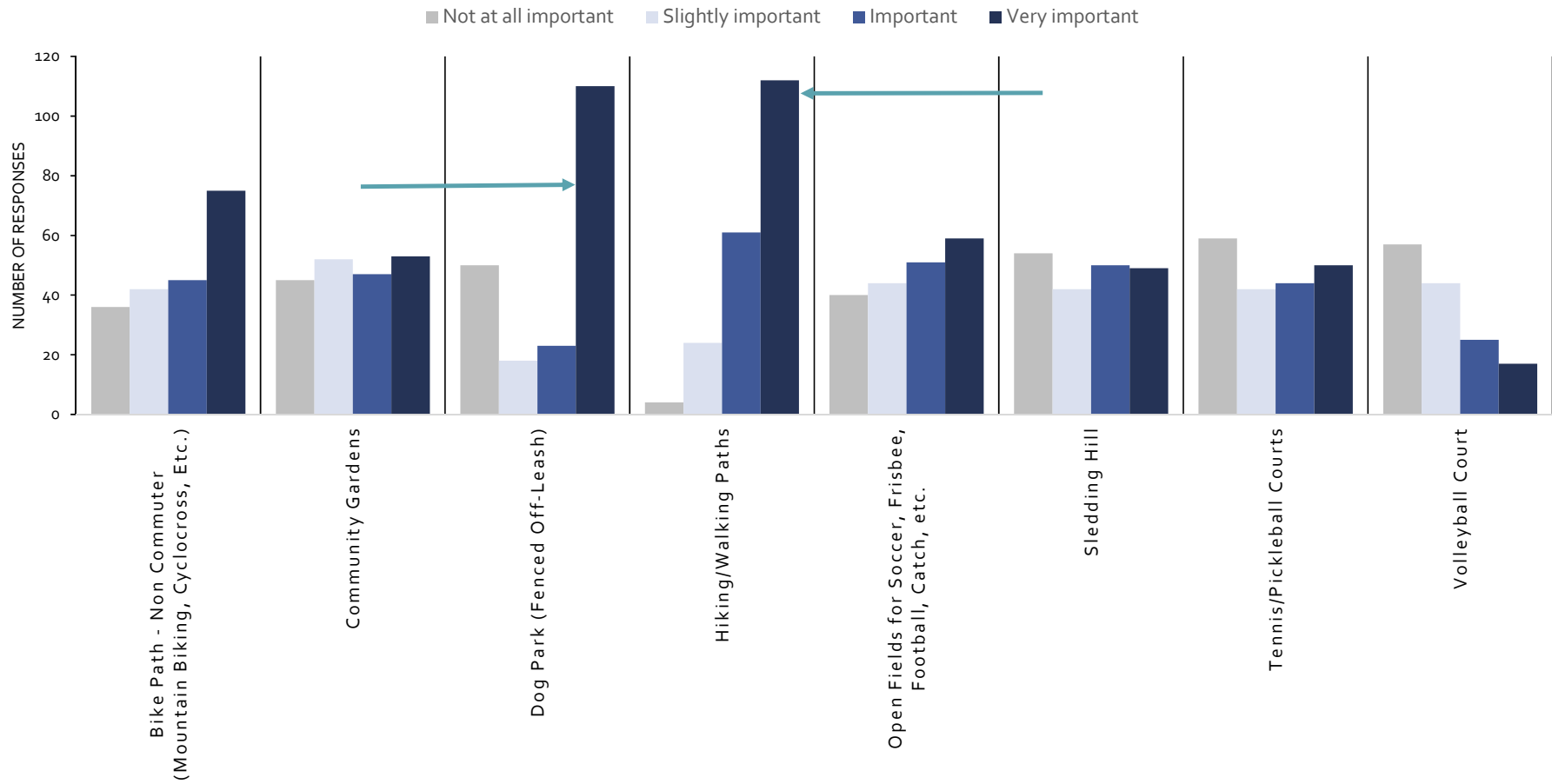
- A. Places for sports and games.
- B. A place for sledding.
- C. Hiking trails and place for nature.
- D. Place for me to take my dog off leash.
- E. Other.

SURVEY

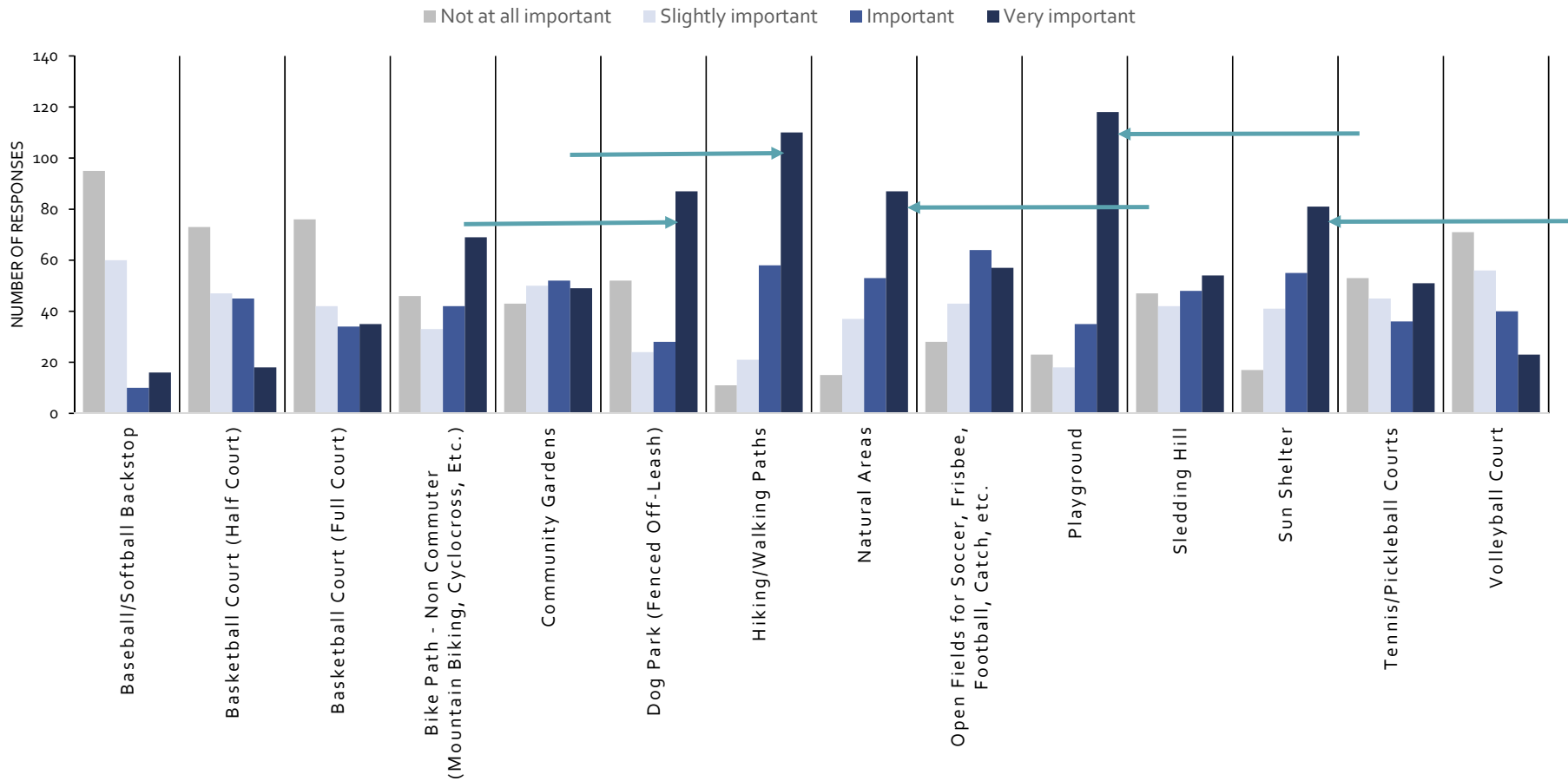
1. ONLINE RESULTS
2. PAPER RESULTS



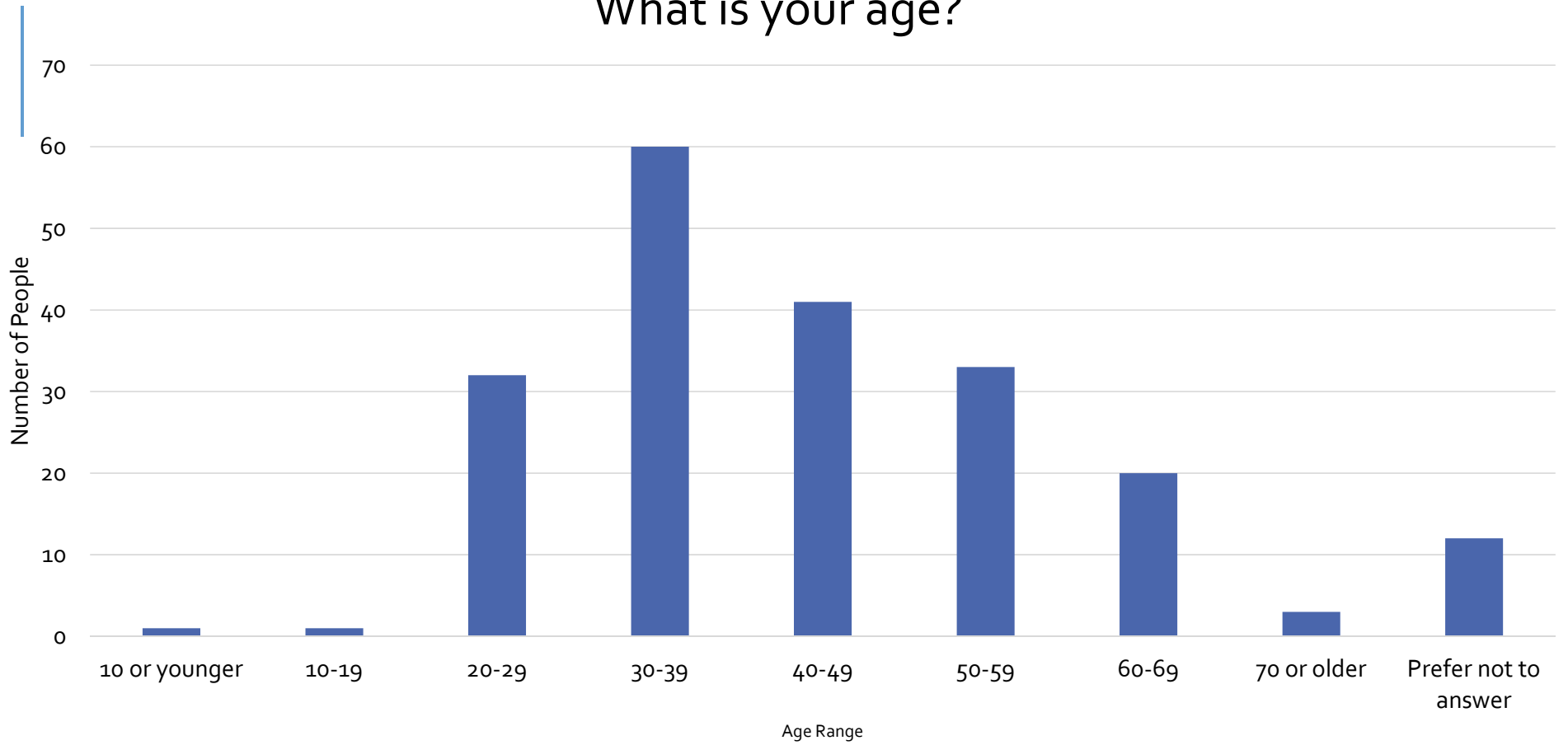
Please select and rank the type of playground amenities you feel are important to be installed at **North Star Park** and should be included in the park master plan.



Please select and rank the type of playground amenities you feel are important to be installed at **Camar Park** and should be included in the park master plan.



What is your age?

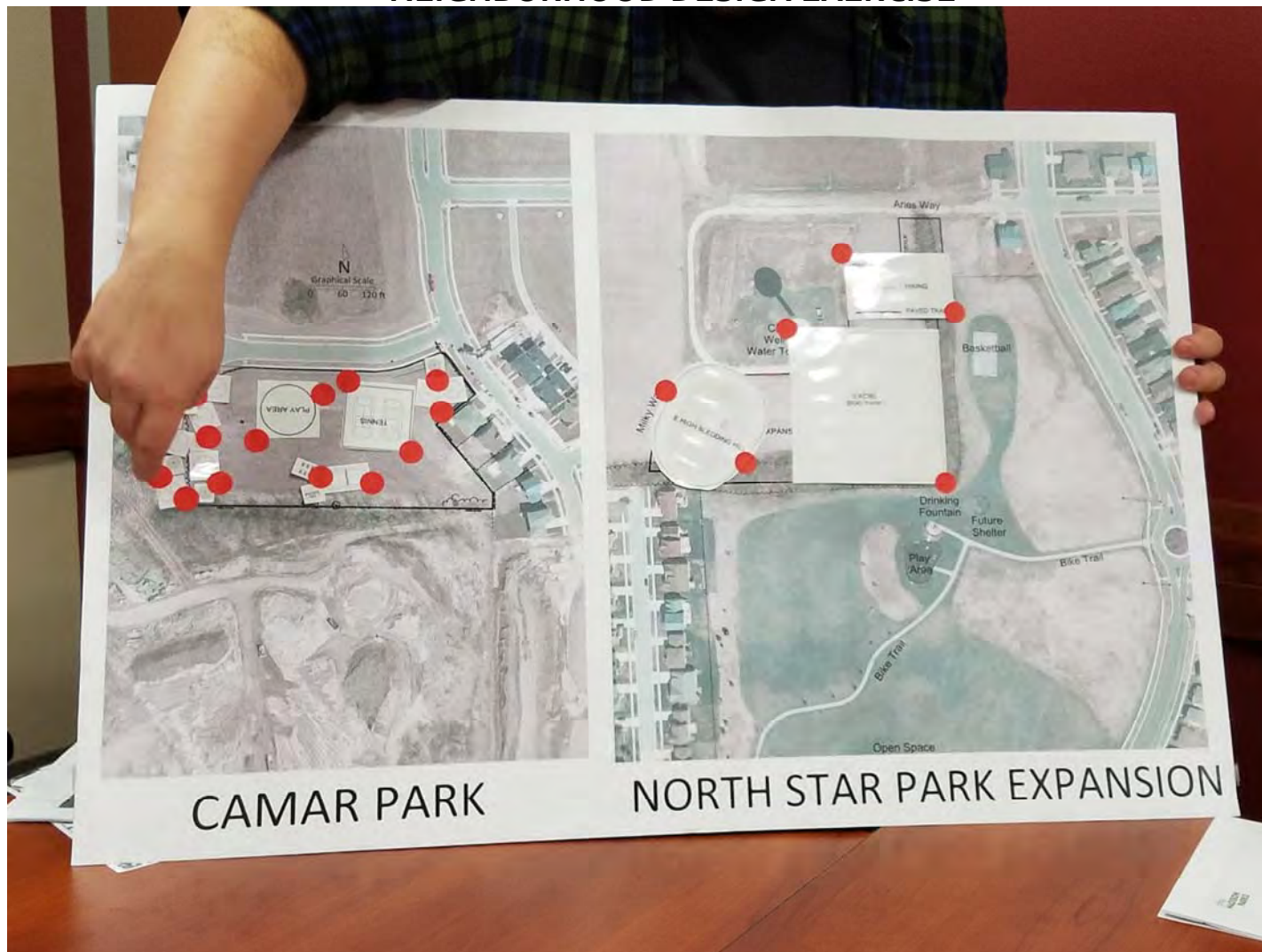


DESIGN YOUR PARK!



NEIGHBORHOOD DESIGN EXERCISE

O
P
T
I
O
N
3

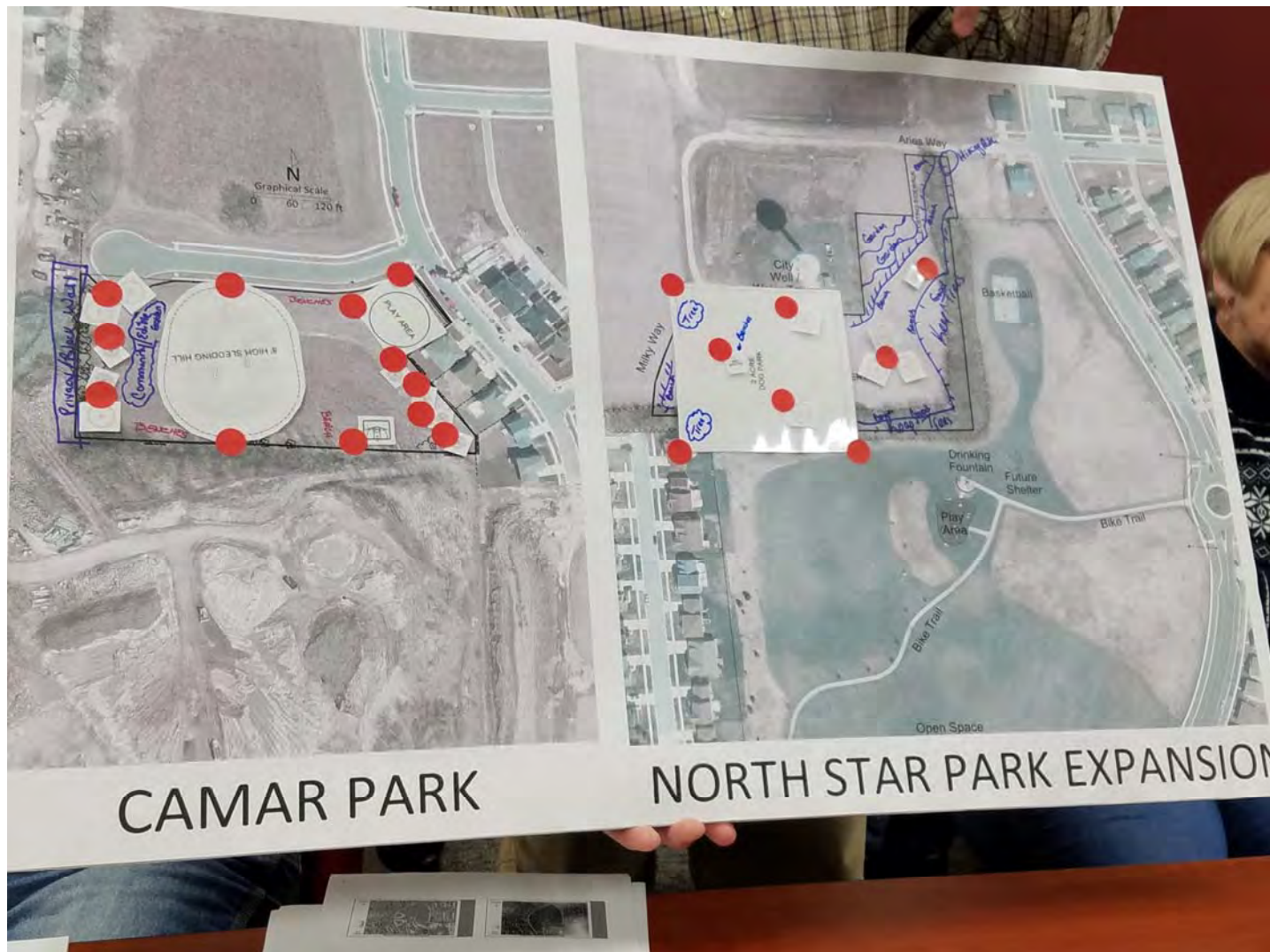


- CAMAR PARK
 - Play Area
 - Tennis
 - Trees
 - Sun Shelter
 - Benches
 - Volleyball
- NORTH STAR PARK
 - Dog Park
 - Sledding Hill
 - Trails

NEIGHBORHOOD DESIGN EXERCISE

O
P
T
I
O
N

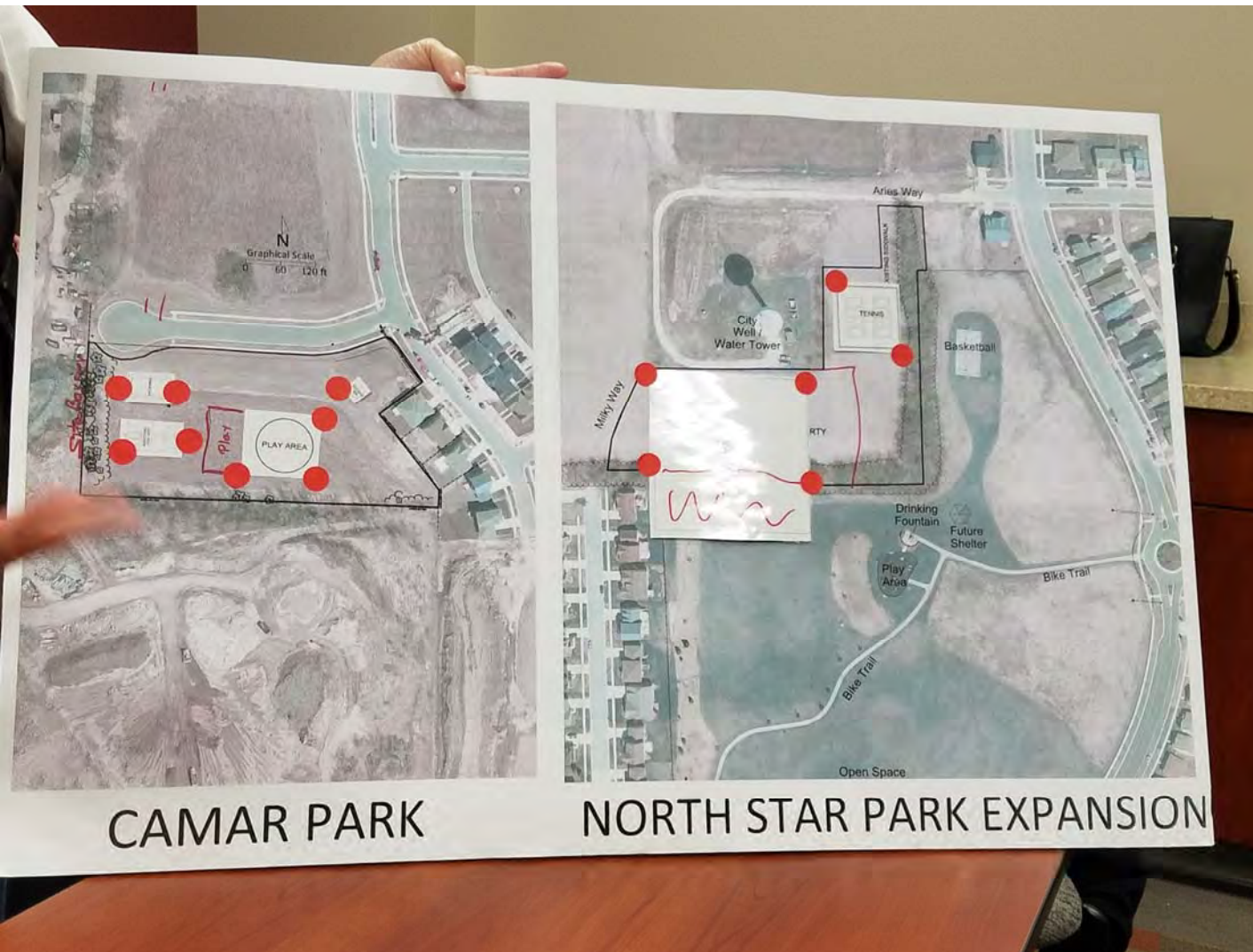
4



- CAMAR PARK
 - Sledding Hill
 - Play Area
 - Half Basketball Court
 - Trees
 - Community/ Edible Garden
 - Benches
 - Privacy Wall
- NORTH STAR PARK
 - Dog Park
 - Benches
 - Trees
 - Garden
 - Paths

NEIGHBORHOOD DESIGN EXERCISE

O
P
T
I
O
N
5

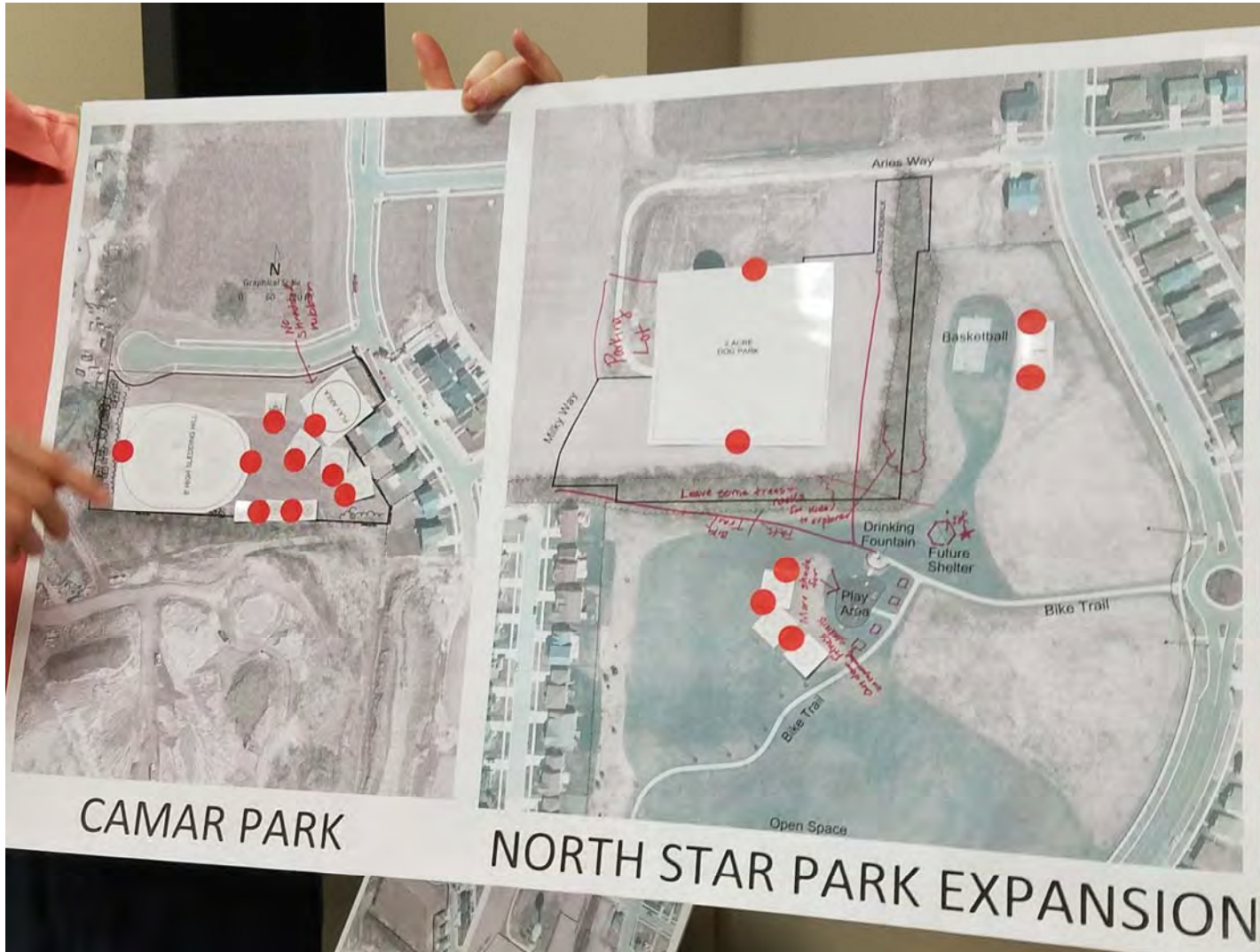


- CAMAR PARK
 - Full basketball court
 - Play Area
 - Sun Shelter
 - Volleyball
 - Site Barrier
- NORTH STAR PARK
 - Dog Park
 - Tennis Courts

NEIGHBORHOOD DESIGN EXERCISE

O
P
T
I
O
N

1



- CAMAR PARK
 - Sledding Hill
 - Play Area
 - Sun Shelter
 - Trees
- NORTH STAR PARK
 - Dog Park
 - Parking Lot
 - Leave Existing Trees
 - Paths

NEIGHBORHOOD DESIGN EXERCISE

O
P
T
I
O
N

2



- Could not come to a consensus

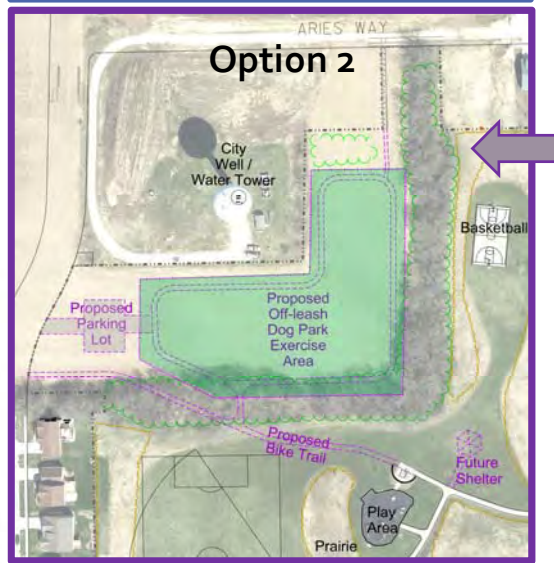
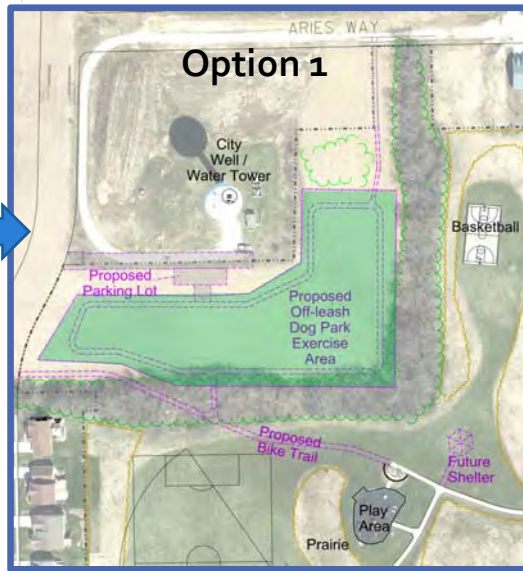
COMMON THEMES

Camar Park

- ✓ iClickers
 - Top Result - Other
- ✓ Survey
 - Dog Park
 - Natural Areas
 - Hiking Paths
 - Play Area
 - Sun Shelter
- ✓ Design Exercise
 - Play Area (4 out of 5 designs)
 - Sun Shelter (3 out of 5 designs)

North Star Park Expansion

- ✓ iClickers
 - Top Result - Place for Nature
- ✓ Survey
 - Dog Park
 - Hiking Paths
- ✓ Design Exercise
 - Dog Park (4 out of 5 designs)
 - Paths (3 out of 5 designs)



Clickers – Real Time Polling

- Push orange button to turn on
- When poll is opened, choose response with A-E buttons
- Display will show a “v” when your response is received
- You can change your answer until the poll closes

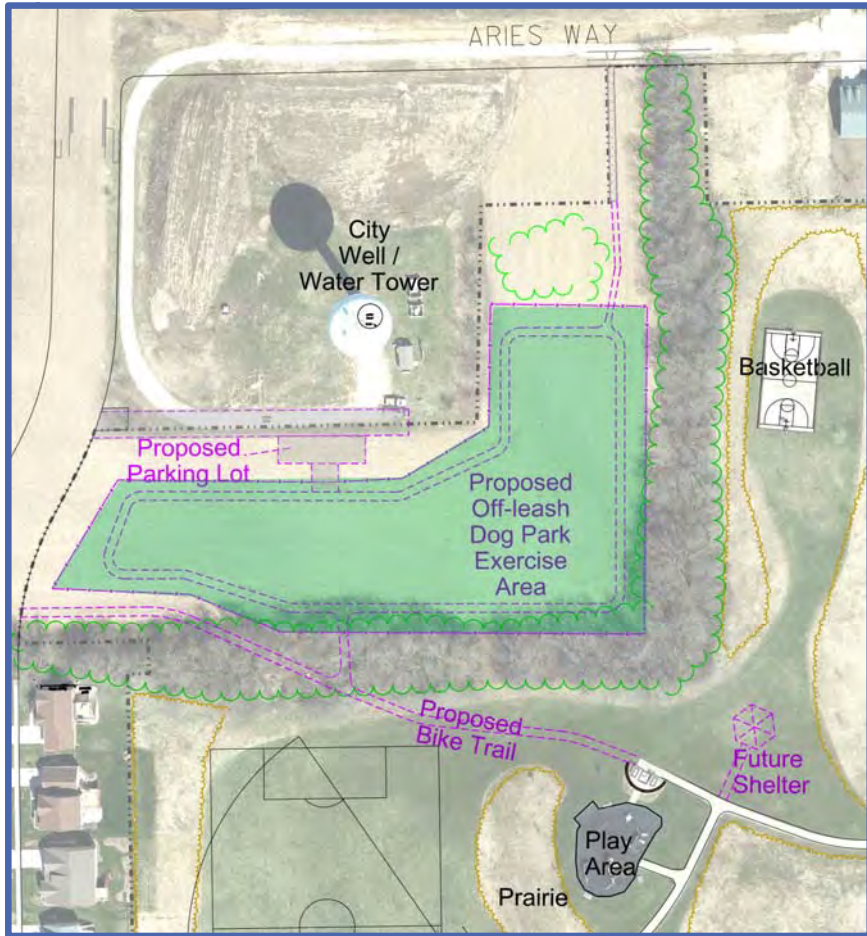


Troubleshooting:

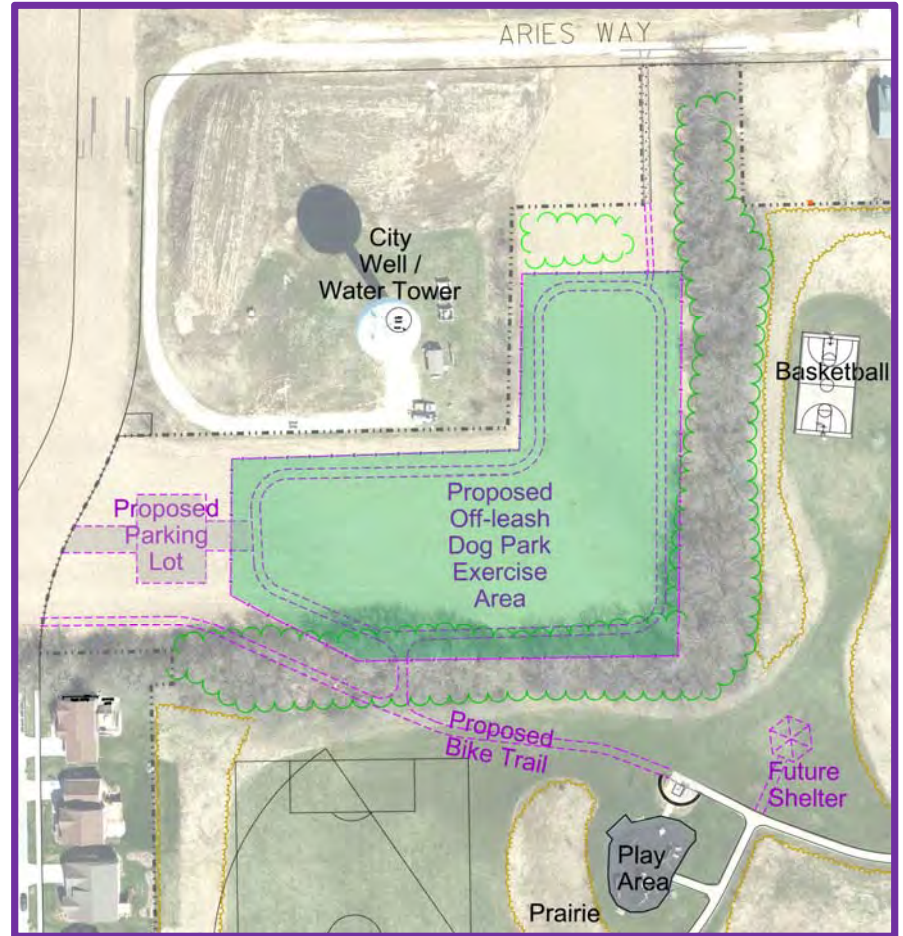
- Display says “Closed” – Poll is closed
- Clicker isn't working – Push power button to turn off; turn on again
- Clicker still isn't working – push and hold power button for two seconds, then press A twice to reconnect to receiver.
- Clickers turn off after 10 minutes; Push power button to turn back on.



**North Star Park Expansion
Option 1 (Select A on the iClicker)**

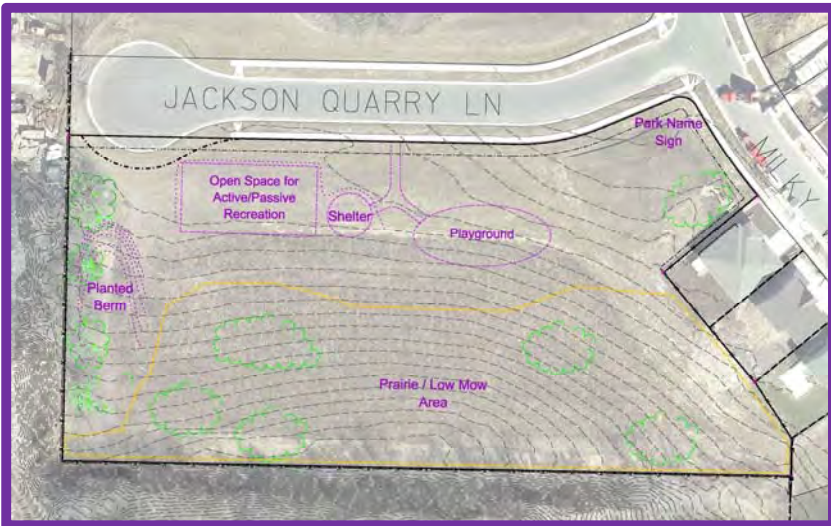


**North Star Park Expansion
Option 2 (Select B on the iClicker)**





**Camar (or new name) Park Expansion
Option 1
(Select A on the iClicker)**



**Camar (or new name) Park Expansion
Option 2
(Select B on the iClicker)**

NEXT STEPS

- BOARD OF PARK COMMISSIONERS APPROVAL OF MASTER PLAN
- FUNDING
 - Capital Funds
 - 2018: \$30,000 Adopted
 - 2019: Propose for Implementation of Master Plan
 - Dog Park Revenue Funds

