

# CAMAR PARK MASTER PLAN & NORTH STAR PARK EXPANSION

Public Meeting  
#1



# INTRODUCTION

Kate Kane, City of Madison Parks Division

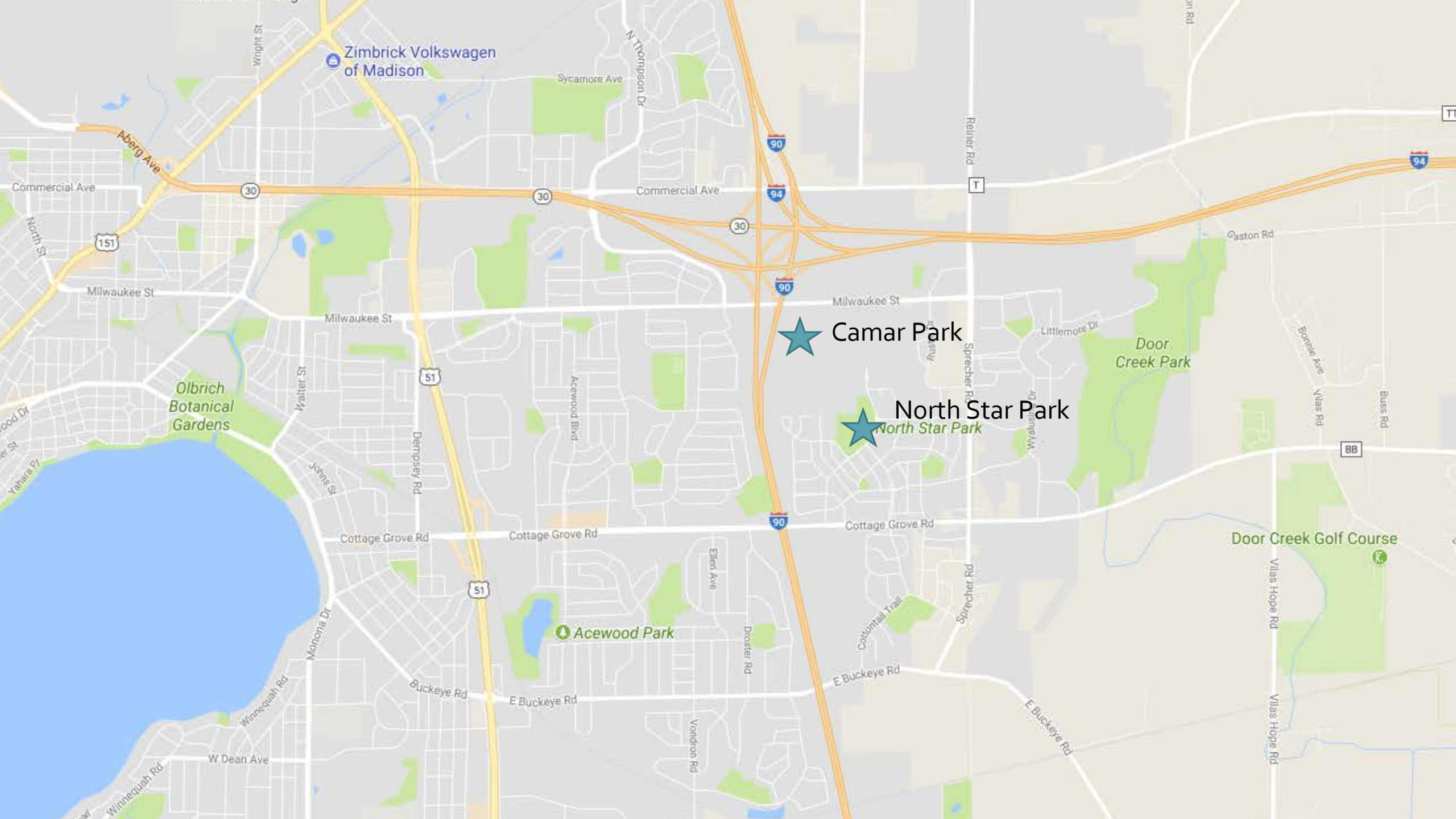
Sarah Lerner, City of Madison Parks Division

# WHAT IS A MASTER PLAN?

- Guides the development of park facilities in the plan.
- Based on neighborhood input.
- Subject to public review.
- Approved by the Board of Park Commissioners.

# TONIGHT'S GOALS

- Introduce the projects
- Discuss typical park facilities
- The big picture!
- Hear your values and vision for the future park areas
- DESIGN YOUR OWN PARK!



Zimbrick Volkswagen of Madison

★ Camar Park

★ North Star Park

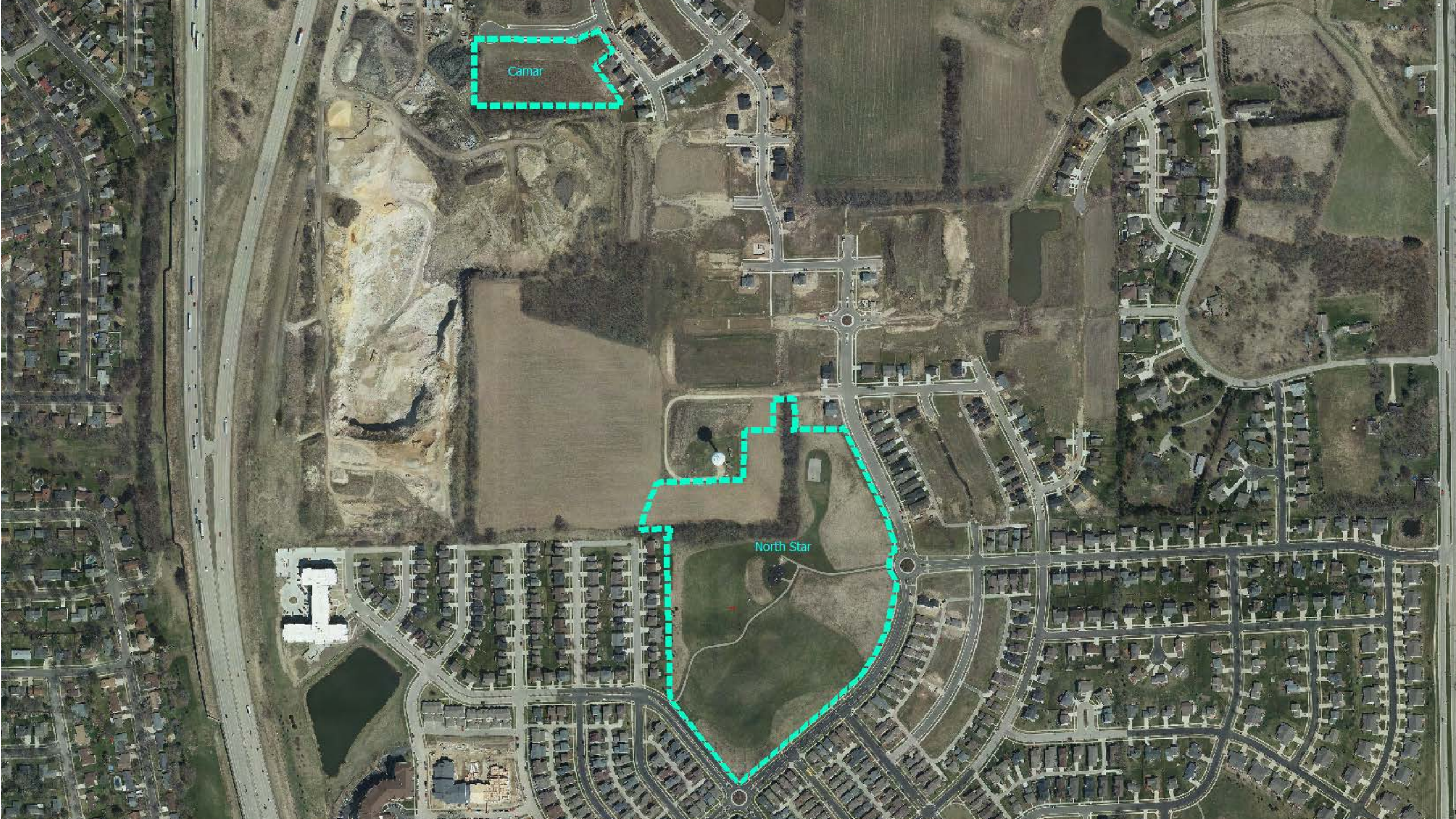
Olbrich Botanical Gardens

▲ Acewood Park

Door Creek Park

Door Creek Golf Course





Camar

North Star



# HISTORY

- **North Star Park – 23.6 acres**
  - 2002 - Grandview Commons Outlot 10 20.5 acres
  - 2014 – North Addition to Grandview Commons Outlot 43 - 4.7 acres
- **Camar Park**
  - 2014- North Addition to Grandview Commons Outlot 46 - 3.47 acres

# EXISTING CONDITIONS

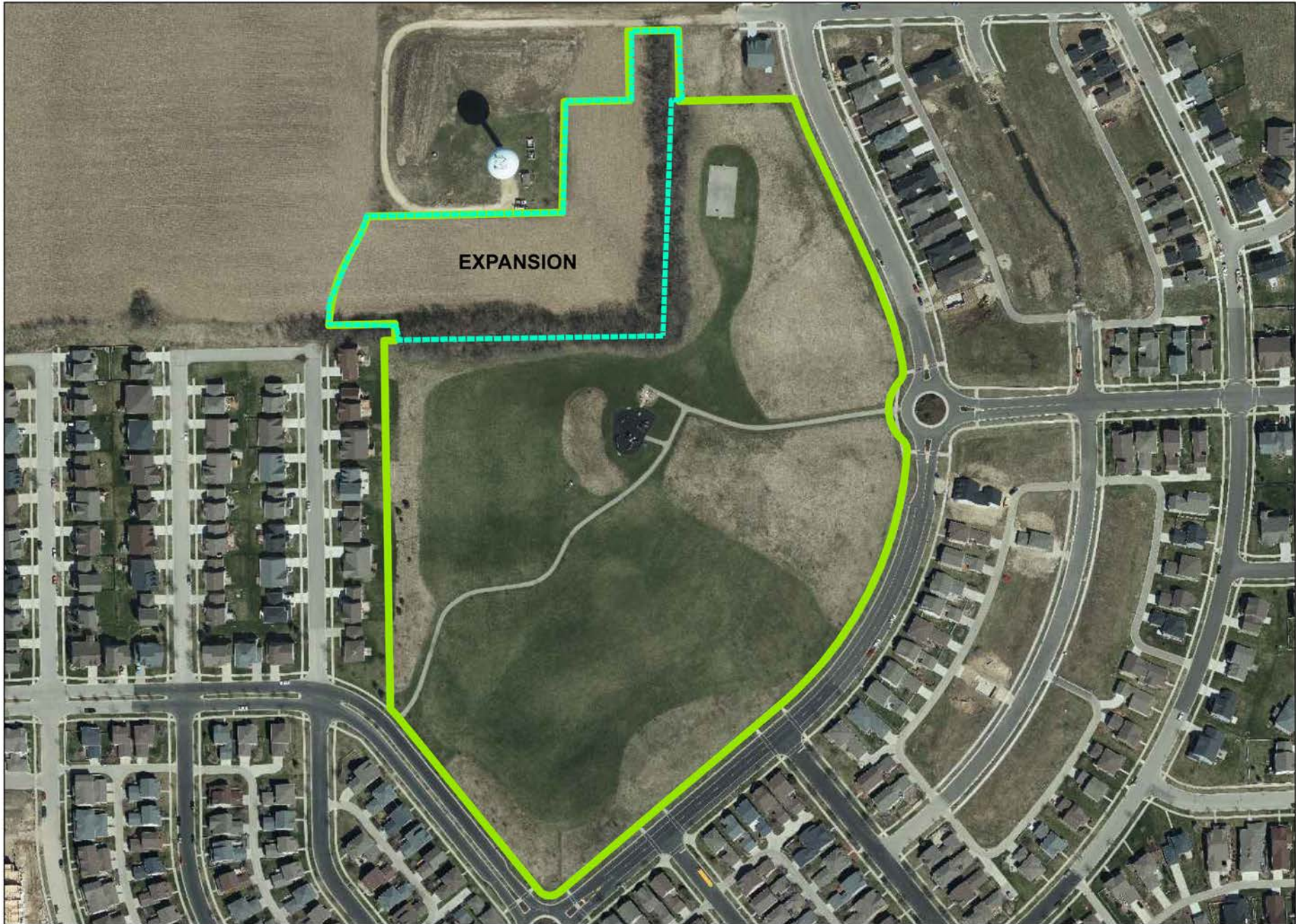
- **North Star Park and Camar Park**
  - Photos
  - Topography and Slope
  - Existing Vegetation
  - Context
  - Adjacent Parks
  - Neighborhood Development Plan



NORTH STAR PARK EXPANSION |

# NORTH STAR PARK EXISTING CONDITIONS

A  
E  
R  
I  
A  
L



North Star Park  
Expansion

Legend  
City of Madison Park



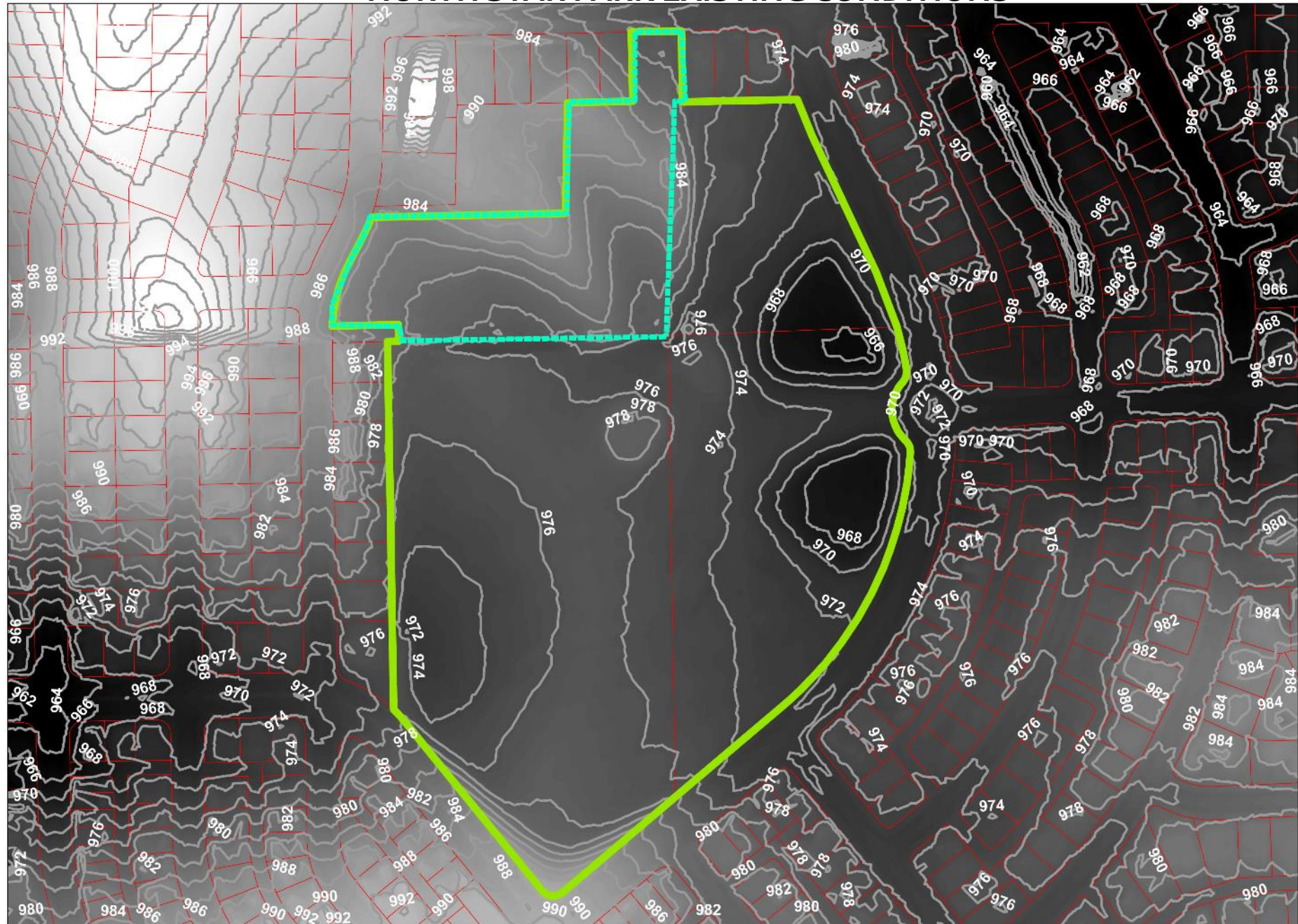
0 100 200  
Feet

Date: 10/30/2017



# NORTH STAR PARK EXISTING CONDITIONS

T  
O  
P  
O  
G  
R  
A  
P  
H  
Y



North Star Park  
Expansion

ELEVATION

Legend

City of Madison Park

Value

High : 1002

Low : 964

Contours



0 100 200  
Feet

Date: 10/30/2017



# NORTH STAR PARK EXISTING CONDITIONS

S  
L  
O  
P  
E



North Star Park  
Expansion

SLOPE

### Legend

- City of Madison Park
- <VALUE>
- 0
- 1 - 5
- 6 - 10
- 11 - 20
- 21 - 100
- Contours



0 100 200  
Feet

Date: 10/30/2017



P  
H  
O  
T  
O  
S



# NORTH STAR PARK EXPANSION |

V  
E  
G  
E  
T  
A  
T  
I  
O  
N

- Primarily forbs and grasses
- Wooded edge being evaluated by Tree Health Management



# NORTH STAR PARK EXPANSION |

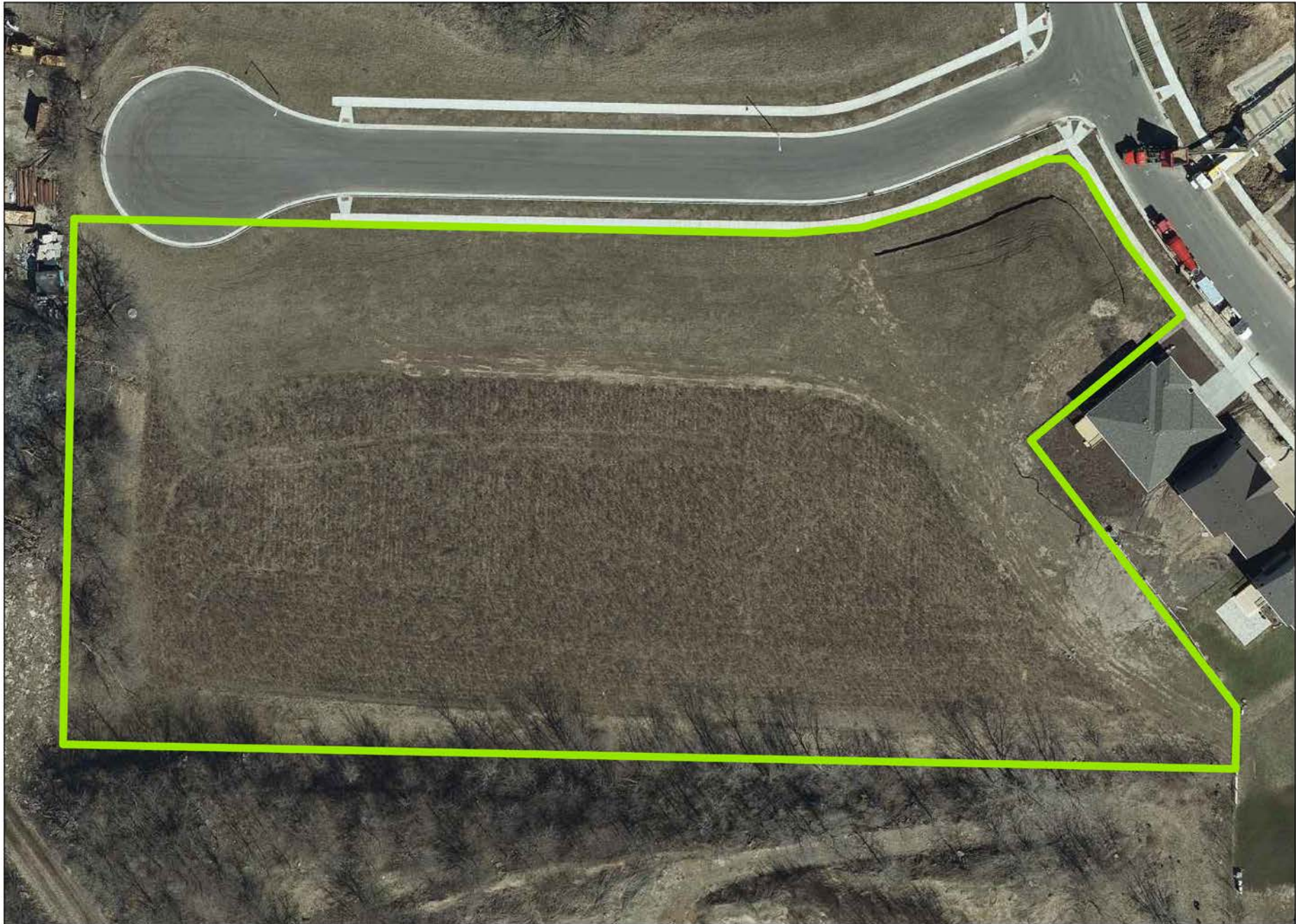
CAMAR PARK





# CAMAR PARK EXISTING CONDITIONS

A  
E  
R  
I  
A  
L



North Star Park  
Expansion

Legend  
City of Madison Park



0 25 50 Feet

Date: 10/30/2017



P  
H  
O  
T  
O  
S



# CAMAR PARK



P  
H  
O  
T  
O  
S



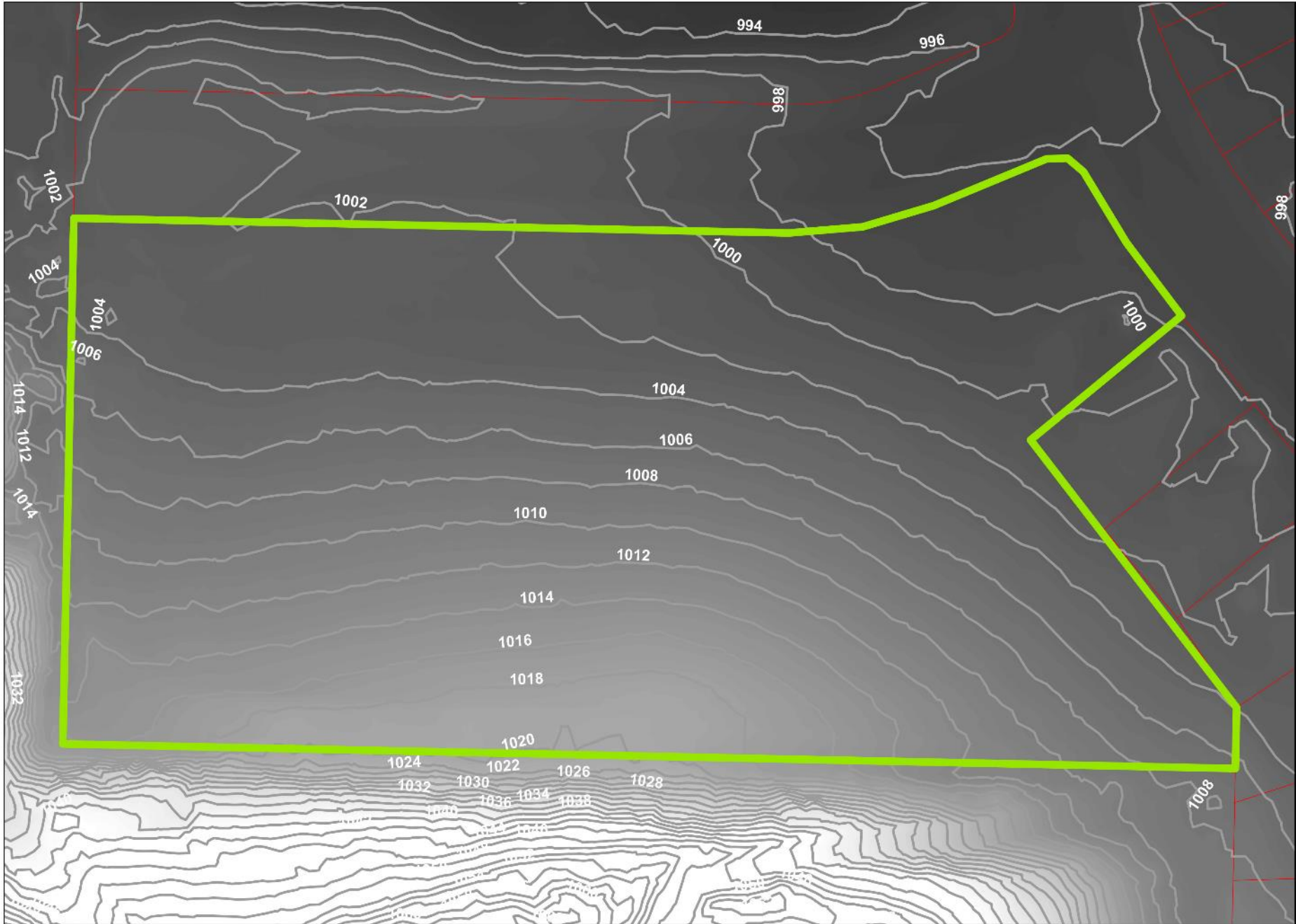
CAMAR PARK





# CAMAR PARK EXISTING CONDITIONS

T  
O  
P  
O  
G  
R  
A  
P  
H  
Y

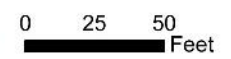


Camar Park

ELEVATION

**Legend**

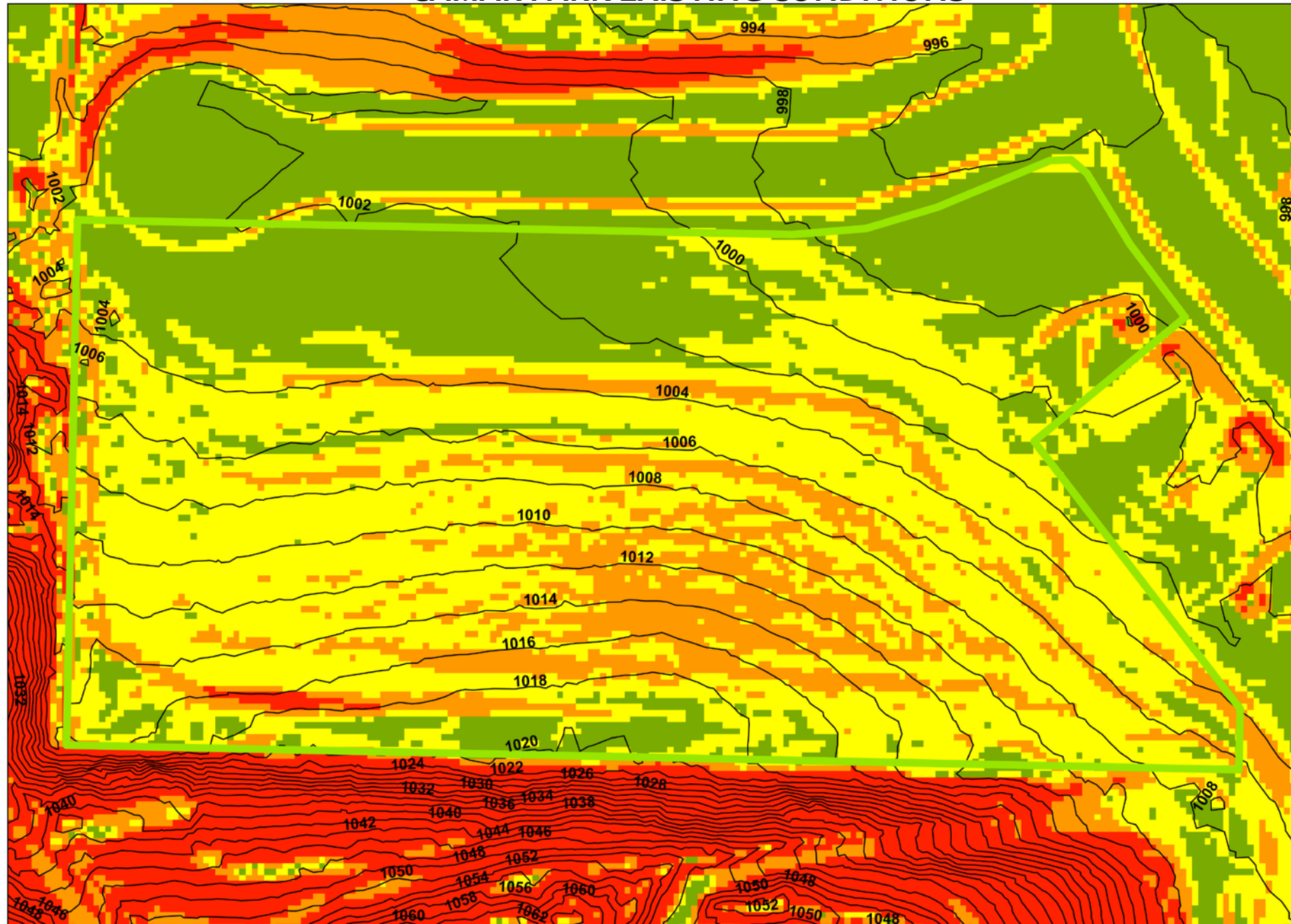
- City of Madison Park
- Value**
  - High : 1040
  - Low : 980
- Contours



Date: 10/30/2017

# CAMAR PARK EXISTING CONDITIONS

S  
L  
O  
P  
E



Camar Park

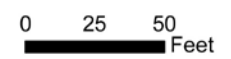
## SLOPE

**Legend**

- City of Madison Park
- Contours

**Slope\_DEM\_202**  
**<VALUE>**

0
1 - 5
6 - 10
11 - 20
21 - 100



Date: 10/30/2017



V  
E  
G  
E  
T  
A  
T  
I  
O  
N

- Mix of forbs and grasses – a small line of trees (primarily Boxelder) at far western edge of park
- Majority of parcel is currently brush or flail mowed
- Opportunity to bring in many more trees at this location



# CONTEXT AND DEMOGRAPHICS

1. Context
  1. Adjacent Parks
  2. Neighborhood Plan
2. Demographics
  1. # of People < 17
  2. # of People 18-65
  3. # of People 65+



A  
D  
J  
A  
C  
E  
N  
T  
P  
A  
R  
K  
S



**CAMAR PARK &  
NORTH STAR PARK  
ADJACENT PARKS**

**Legend**  
City of Madison Park



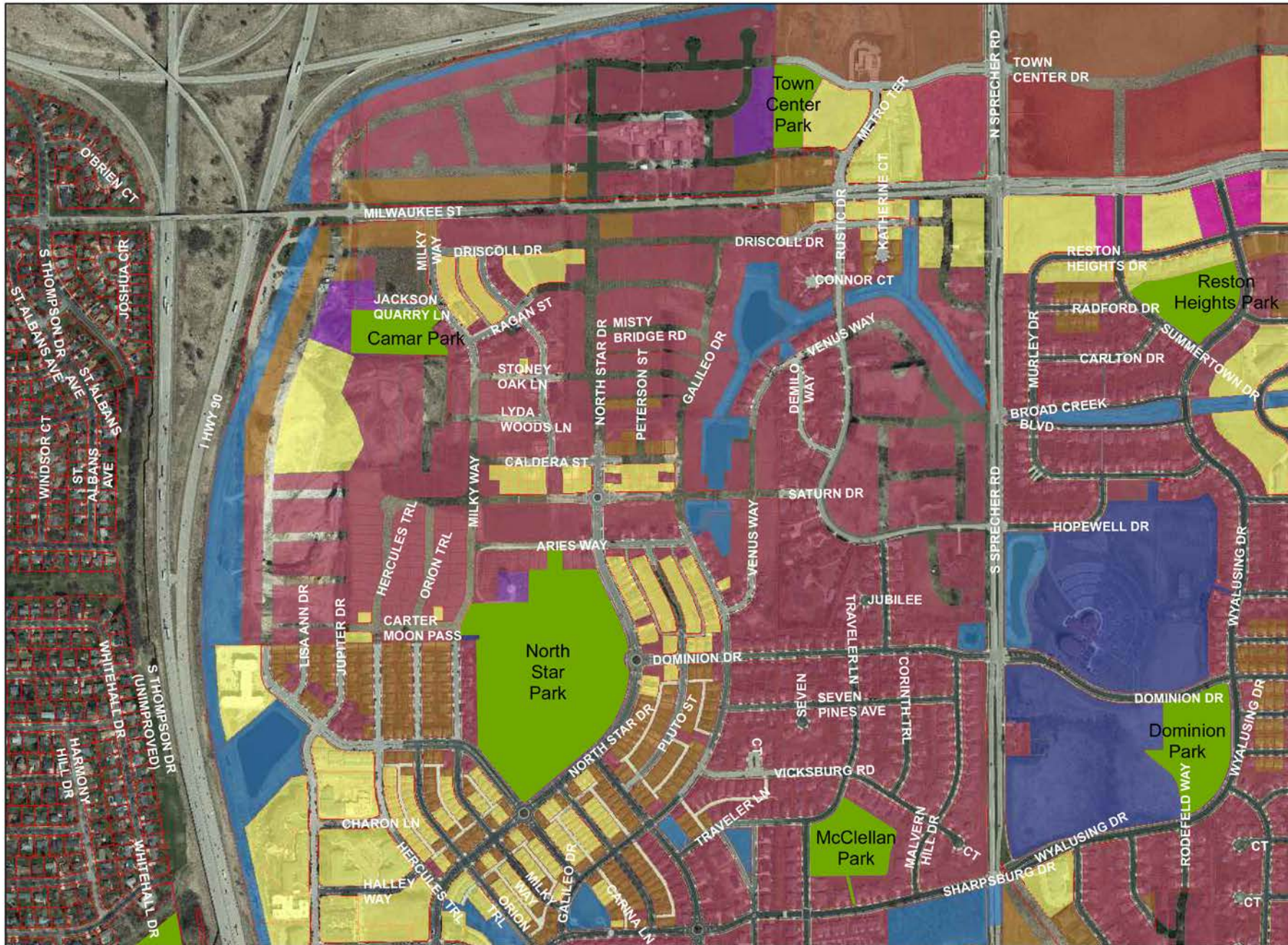
0 300 600 Feet

Date: 11/6/2017



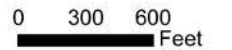
# NEIGHBORHOOD

## SPRECHER NEIGHBORHOOD DEVELOPMENT PLAN



### Legend

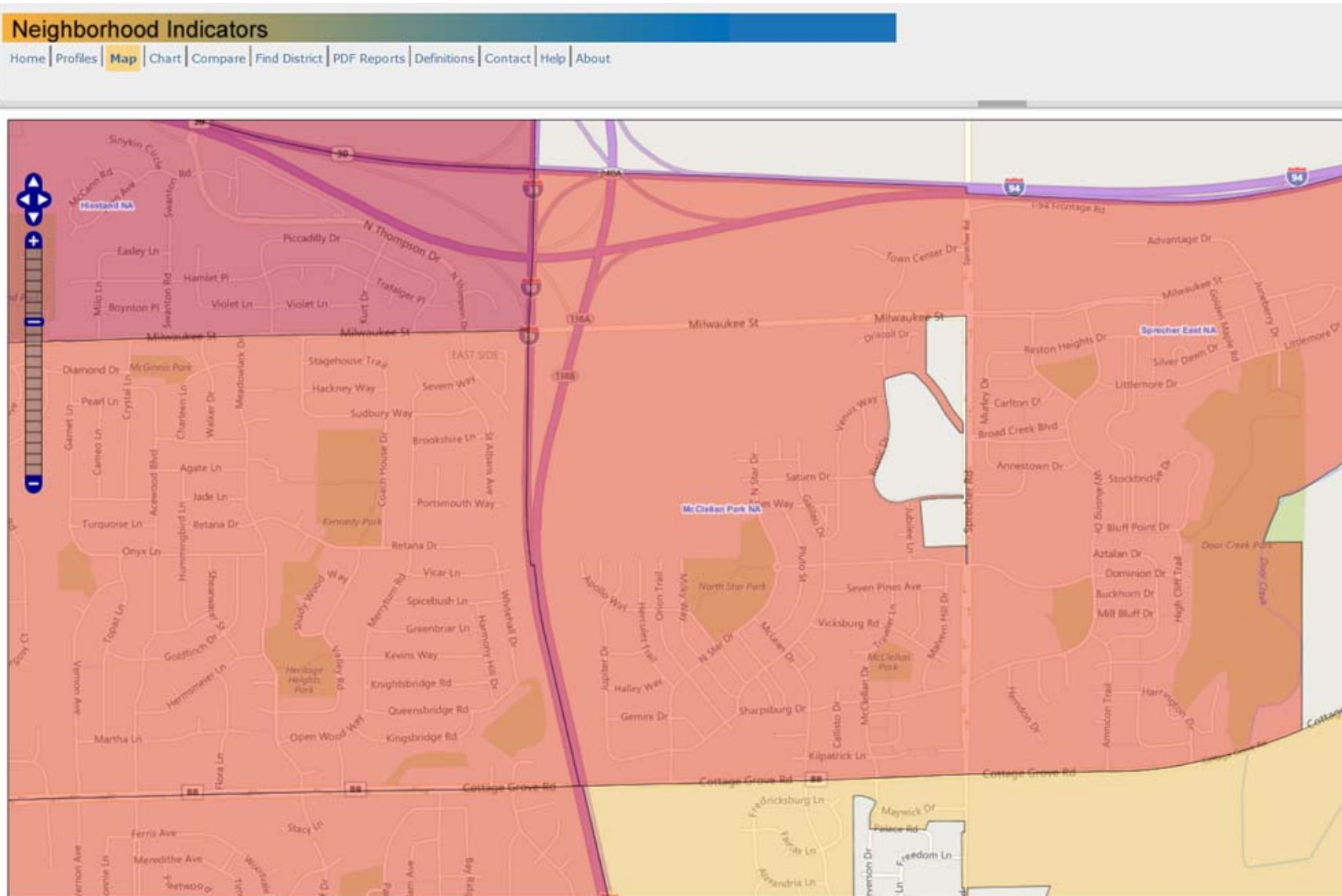
- MMSD Schools
  - City of Madison Park
  - <all other values>
- LandUSE**
- Community Mixed Use
  - Employment
  - Housing Mix 1 ( 0-8 du/ac)
  - Housing Mix 2 (9-20 du/ac)
  - Housing Mix 3 (21-40 du/ac)
  - Industrial
  - Institutional
  - Neighborhood Retail and Service
  - Park
  - Regional Mixed Use
  - Stormwater and Other Open Space
  - Utilities



Date: 10/30/2017



D  
E  
M  
O  
G  
R  
A  
P  
H  
I  
C  
S

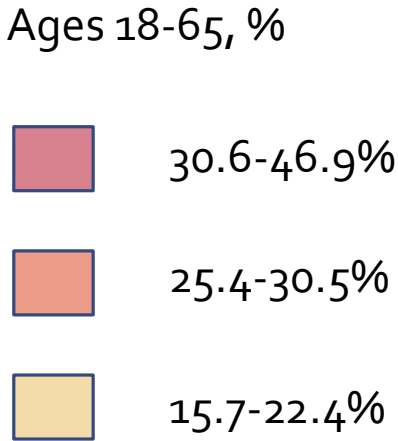
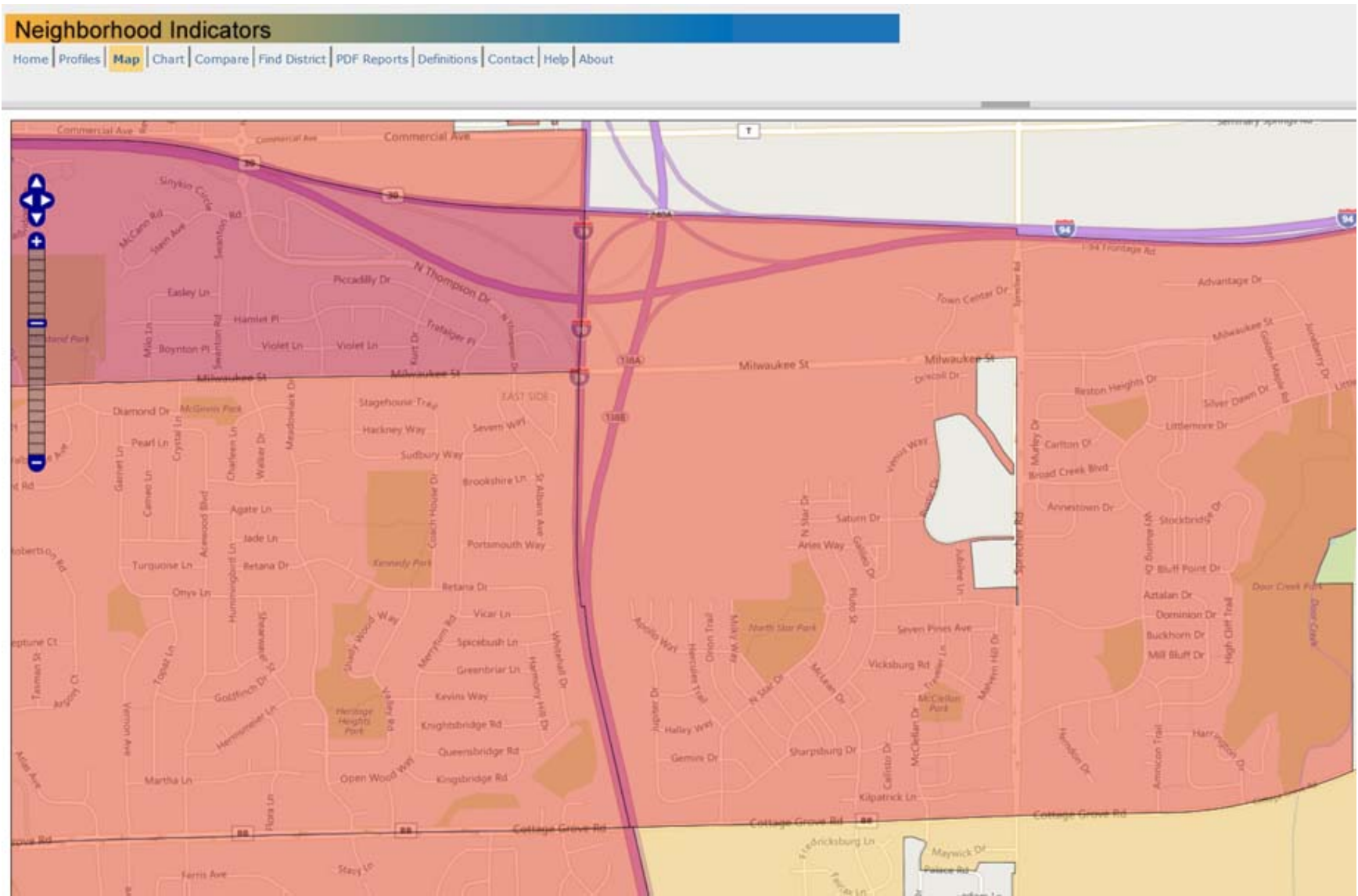


Age 17 and under, %

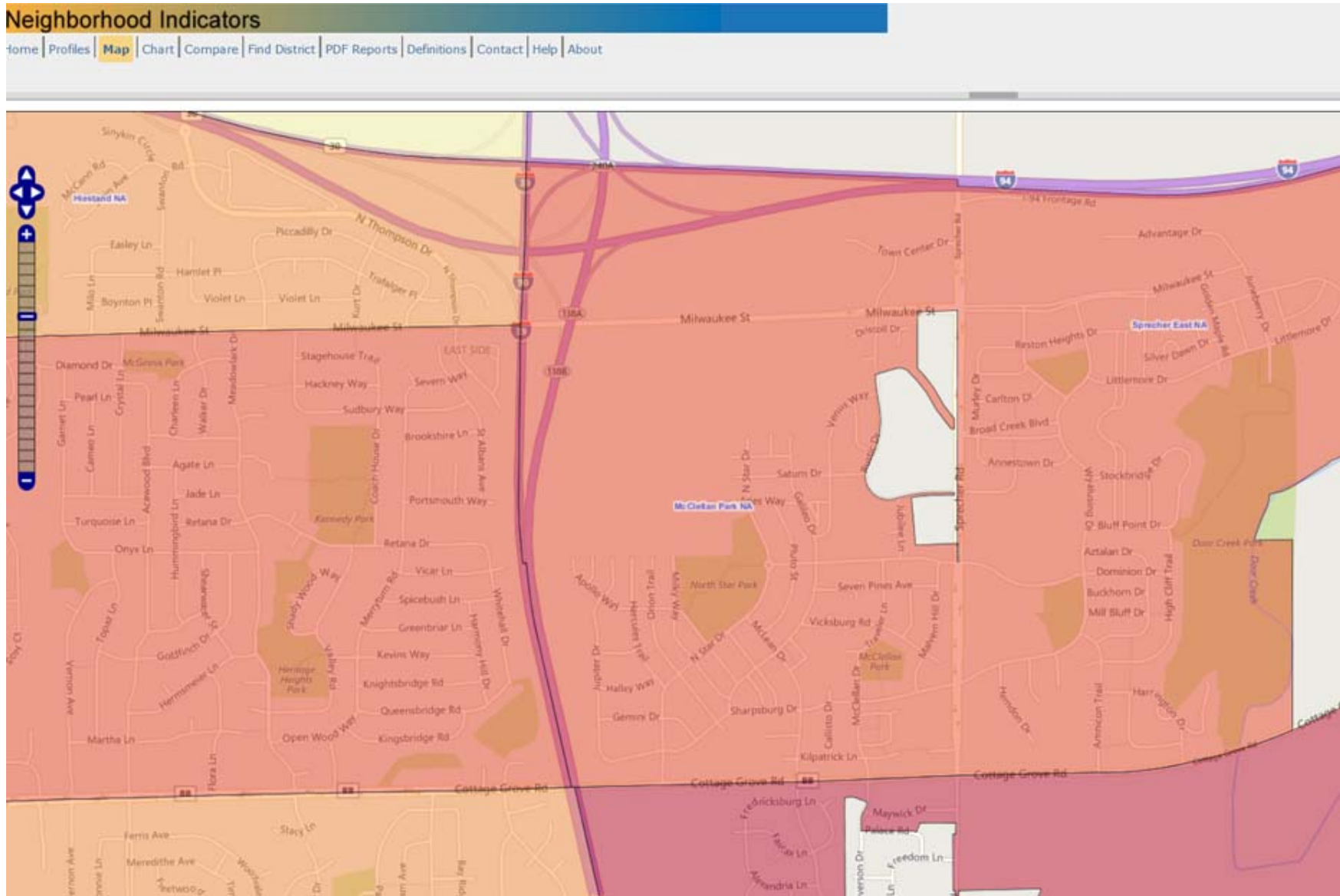
- 24-34.5%
- 21-24.3%
- 0.2-13.9%



D  
E  
M  
O  
G  
R  
A  
P  
H  
I  
C  
S



D  
E  
M  
O  
G  
R  
A  
P  
H  
I  
C  
S



Age 65 and over, %

- 9.1-13.6%
- 12.7-16.8%
- 16.9-48.6%



# CITY OF MADISON PARK TYPICAL NEIGHBORHOOD PARK AMENITIES

- Playground
- Basketball Courts
- Softball/Baseball Backstop
- Sun Shelter
- Open Fields for Soccer/Frisbee/Catch/Etc.
- Trails
- Site Furnishings (Benches, Signage, Trash Bins)



# UNIQUE NEIGHBORHOOD PARK AMENITIES

- Fenced Off-Leash Dog Park
- Mountain Bike Trails
- Community Gardens (Managed by Community GroundWorks)
- Edible Landscaping
- Hiking Trails
- Volleyball
- Tennis Courts
- Prairie Restorations



# IClicker QUESTIONS

## Clickers – Real Time Polling

- Push orange button to turn on
- When poll is opened, choose response with A-E buttons
- Display will show a “v” when your response is received
- You can change your answer until the poll closes



### Troubleshooting:

- Display says “Closed” – Poll is closed
- Clicker isn’t working – Push power button to turn off; turn on again
- Clicker still isn’t working – push and hold power button for two seconds, then press A twice to reconnect to receiver.
- Clickers turn off after 10 minutes; Push power button to turn back on.



# IClicker QUESTIONS



How long have you lived in the neighborhood?

- A. A few months.
- B. Over a year.
- C. A few years.
- D. I don't live in the neighborhood.





# IClicker QUESTIONS



Why do you typically visit parks?



- A. To walk or view nature.
- B. To play a game or participate in a field sport.
- C. To take my child(ren) to a playground.
- D. To go to an event or festival.
- E. Other

# IClicker QUESTIONS



How do you get to the park you most frequent?

- A. Walk
- B. Bike
- C. Drive
- D. Public Transportation
- E. Other





# IClicker QUESTIONS



What do you feel is most lacking in your community open spaces?

- A. Places to walk or bike for exercise.
- B. Places for children to play.
- C. Places to picnic and have gatherings.
- D. Places to grow and eat local food.
- E. Other



# IClicker QUESTIONS



What would be your most desired amenity at NORTH STAR park?



- A. Place for sports and games.
- B. A place for sledding
- C. Hiking trails and place for nature
- D. Place for me to take my dog off leash.
- E. Other



# IClicker QUESTIONS



What would be your most desired amenity at CAMAR park?



- A. Place for sports and games.
- B. A place for sledding
- C. Hiking trails and place for nature
- D. Place for me to take my dog off leash.
- E. Other

# DESIGN YOUR PARK!

1. Work in a group for 20 minutes.
2. Share ideas.





# TAKE THE SURVEY!

1. A survey will be mailed to you and will be available online in the next few weeks.



# NEXT STEPS, STAY CONNECTED!

CAMAR PARK MASTER PLAN & NORTHSTAR PARK EXPANSION

[www.cityofmadison.com/parks/projects/](http://www.cityofmadison.com/parks/projects/)

Twitter: @playmadison

Facebook: Madison Parks, @cityofmadisonparks

Project Contacts:

Sarah Lerner (North Star Park)

(608) 261-4281

[slerner@cityofmadison.com](mailto:slerner@cityofmadison.com)

Kate Kane (Camar Park)

(608) 261-9671

[kkane@cityofmadison.com](mailto:kkane@cityofmadison.com)





THANK YOU!



Don't forget to  
return your  
clicker to us!